

**REVSTAT**

REVIEW STATUS (not abstracted)

0. Abstraction has not begun
1. Abstraction in progress
2. Abstraction completed w/o errors
3. TVG failure (exclusion)
4. Record contains missing required answers (error record)
5. Administrative exclusion from all measures

**FL\_INPT** (rcvd on pull list)

Flag indicating inpatient encounter

**ADMDATE** (FE)

Enter the admission date.

**DCDATE** (FE)

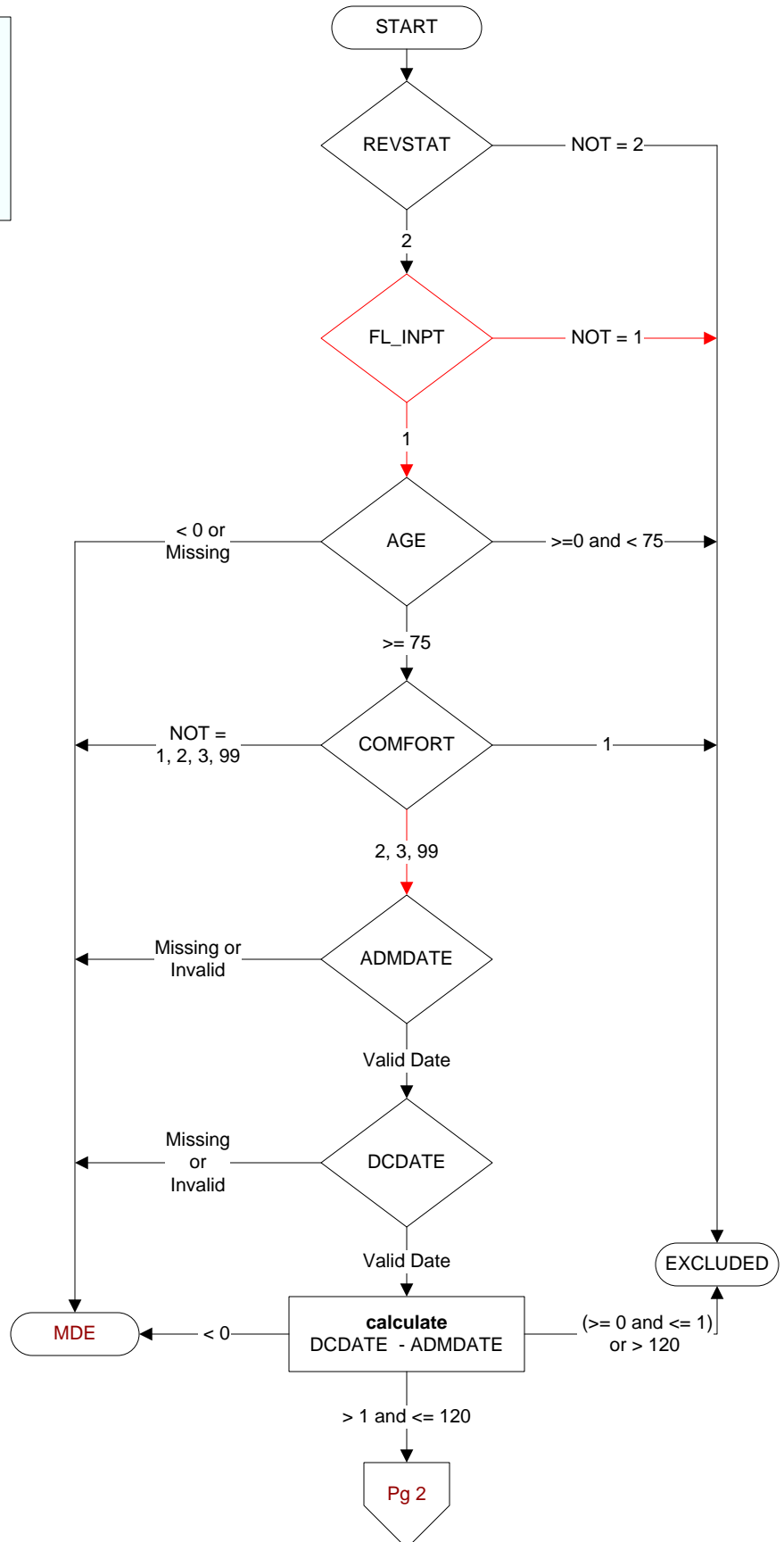
Enter the date of discharge for the most recent acute care hospitalization.

**COMFORT** (FE)

When is the earliest physician, APN, or PA documentation of comfort measures only?

1. Day of arrival (day 0) or day after arrival (day 1)
2. Two or more days after arrival (day 2 or greater)
3. Comfort measures only documented during hospital stay, but timing unclear
99. Comfort measures only was not documented by the physician/APN/PA or unable to determine

**MDE = Missing or Invalid Data Exclusion (data error)**



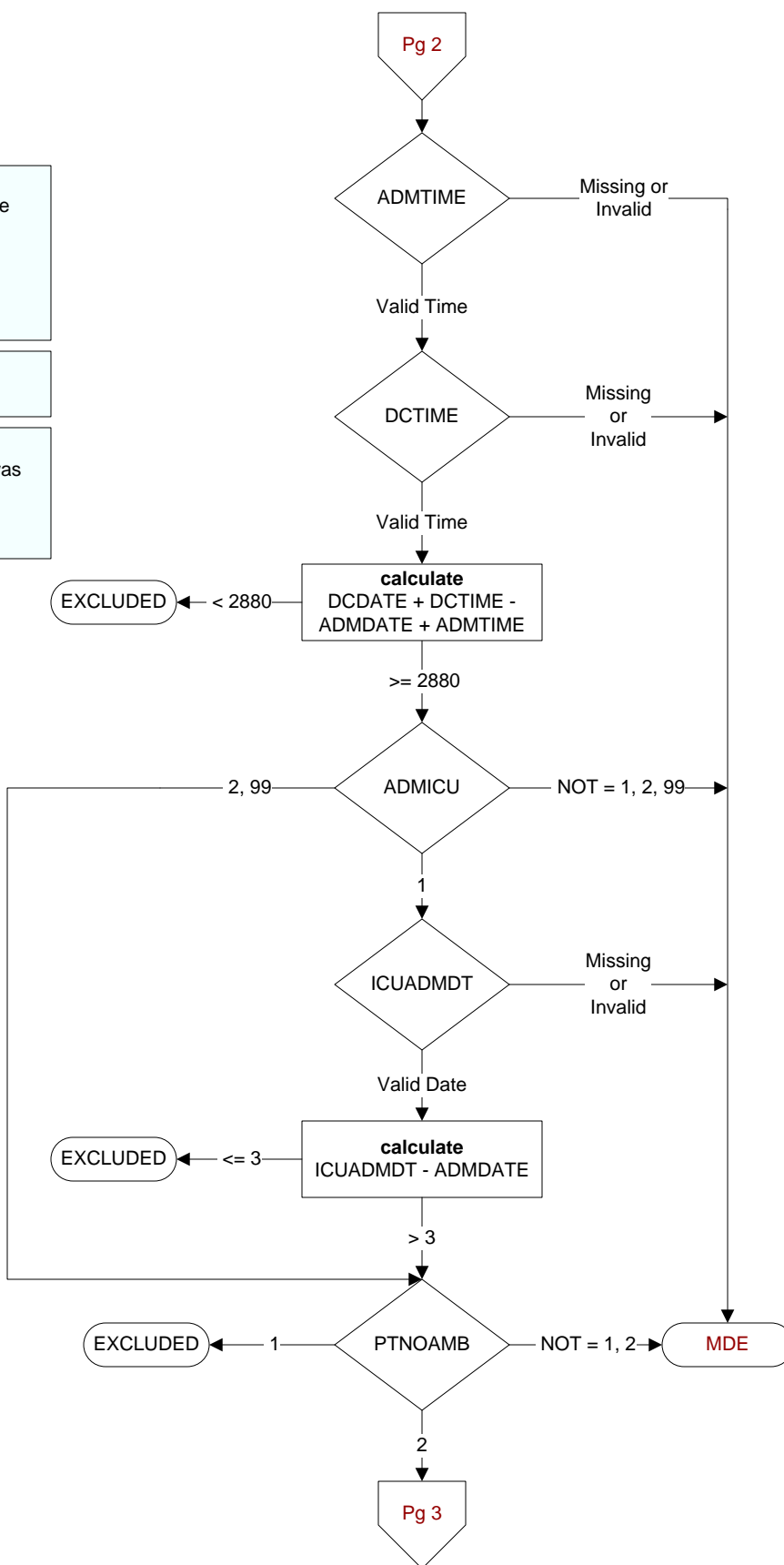
**ADMTIME** (FE)  
Enter the admission time.

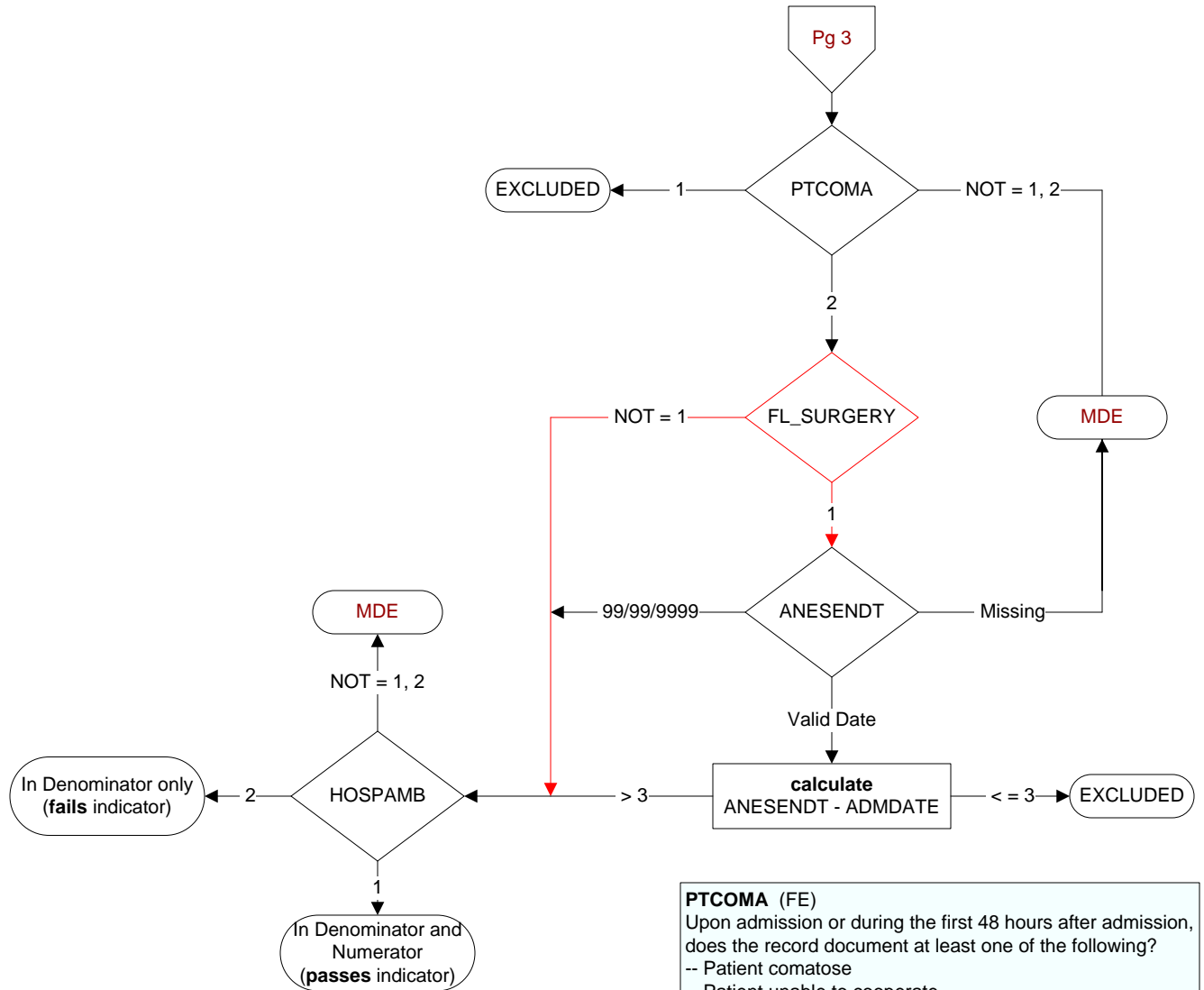
**DCTIME** (FE)  
Enter the discharge time.

**ADMICU** (FE)  
Was the patient admitted or transferred to the intensive care unit at this VAMC during this hospitalization?  
1. Yes  
2. No  
99. Unable to determine

**ICUADMDT** (FE)  
Enter the ICU admission date.

**PTNOAMB** (FE)  
Does the record document that the patient was bedridden prior to admission?  
1. Yes  
2. No





**PTCOMA (FE)**  
Upon admission or during the first 48 hours after admission, does the record document at least one of the following?  
-- Patient comatose  
-- Patient unable to cooperate  
1. Yes  
2. No

**ANESENDT (FE/SCIP)**  
Enter the anesthesia end date.

**HOSPAMB (FE)**  
By the end of hospital day 2, was a plan for mobility documented?  
1. Yes  
2. No

**SURGERY (FE)**  
Was a major surgical procedure performed using general or neuraxial anesthesia during the hospital stay?  
1. Yes  
2. No