

**Document Links:**[CGPI Validation Module](#)[CGPI OP Med Recon Module](#)**CATNUM**

Sample category

- 16. AMI - Outpatient visit
- 36. SCI Dx
- 48. Female, age 20-69
- 50. Random Sample
- 51. Random Sample MH
- 54. Frail/Elderly
- 60. DM Outpatient
- 61. Inpatient SC
- 68. Contract CBOC

**REVSTAT**

REVIEW STATUS (not abstracted)

- 0. Abstraction has not begun
- 1. Abstraction in progress
- 2. Abstraction completed w/o errors
- 3. TVG failure (exclusion)
- 4. Record contains missing required answers
- 5. Administrative exclusion from all measures

**OTHCARE** (CGPI Validation)

Is there evidence in the medical record that within the past two years, the patient refused VHA Primary Care and is receiving ONLY his/her primary care in a non-VHA setting?

- 1. yes
- 2. no

**OPTMED1-8** (OP MedRec)

During the most recent NEXUS encounter on (computer to display NEXUSDT), is there evidence in the medical record that the prescribing provider's note included or referenced a medication list for review including all of the following components?

**Medication List Component****OPTMED1.** Active VA Prescriptions

- 1. Yes
- 2. No

**OPTMED2.** Remote Active VA Prescriptions

- 1. Yes
- 2. No

**OPTMED3.** Non-VA Medications

- 1. Yes
- 2. No

**OPTMED4.** Expired VA Prescriptions (see D/D rules)

- 1. Yes
- 2. No

**OPTMED5.** Discontinued VA Prescriptions (see D/D rules)

- 1. Yes
- 2. No

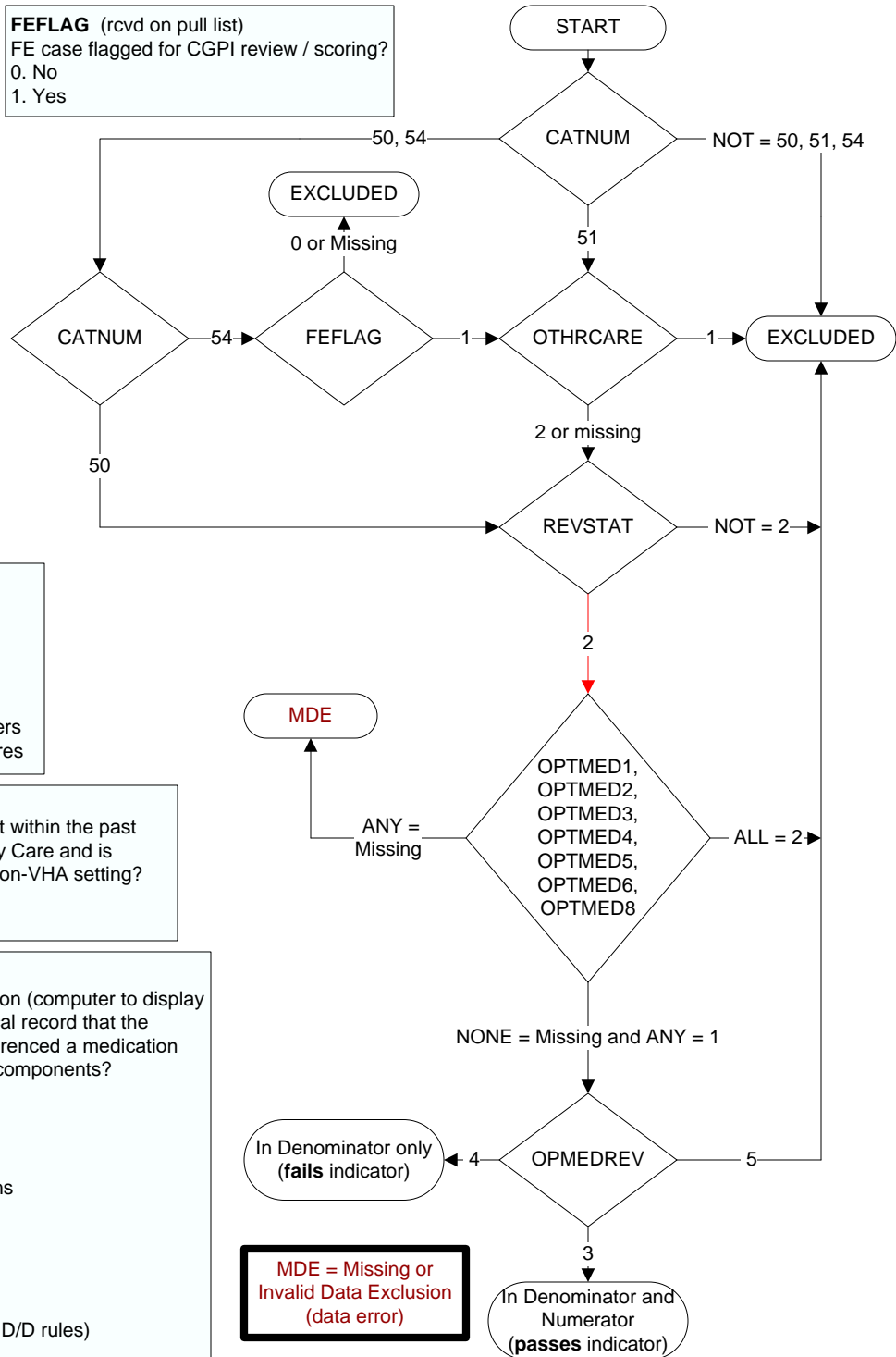
**OPTMED6.** Pending Medication Orders

- 1. Yes
- 2. No

**OPTMED8.** Allergies (Remote Facility AND Local Facility)

- 1. Yes
- 2. No

**FEFLAG** (rcvd on pull list)  
FE case flagged for CGPI review / scoring?  
0. No  
1. Yes



**MDE = Missing or  
Invalid Data Exclusion  
(data error)**

**OPMEDREV** (OP MedRec)

During the most recent NEXUS encounter on (computer to display NEXUSDT), is there documentation the available essential medication list components were reviewed with the patient/caregiver?

- 3. Yes
- 4. No: There is no documentation that the available essential medication list components were reviewed with the patient/caregiver
- 5. Documented the patient/caregiver refused or was unable to participate in review of essential medication list components