

Document Links:[Global Measures Instrument](#)[Inpt MedRecon Module](#)**REVSTAT**

REVIEW STATUS (not abstracted)

0. Abstraction has not begun
1. Abstraction in progress
2. Abstraction completed w/o errors
3. TVG failure (exclusion)
4. Record contains missing required answers
5. Administrative exclusion from all measures

CATNUM

Sample Cohort (rcvd on pull list)

70. Global Measures

ADMDT (GM)

Admission date:

DCDT (GM)

Discharge date:

REVPTMED1-9 (IP MedRec)

Upon admission or during the 24 hours after admission, is there evidence in the medical record that the prescribing provider's note included or referenced a medication list for review including all of the following components?

Essential Medication List Component**REVPTMED1.** Active VA Prescriptions

1. Yes
2. No

REVPTMED2. Remote Active VA Prescriptions

1. Yes
2. No

REVPTMED3. Non-VA Medications

1. Yes
2. No

REVPTMED4. Expired VA Prescriptions (see D/D rules)

1. Yes
2. No

REVPTMED5. Discontinued VA Prescriptions (see D/D rules)

1. Yes
2. No

REVPTMED6. Pending Medication Orders

1. Yes
2. No

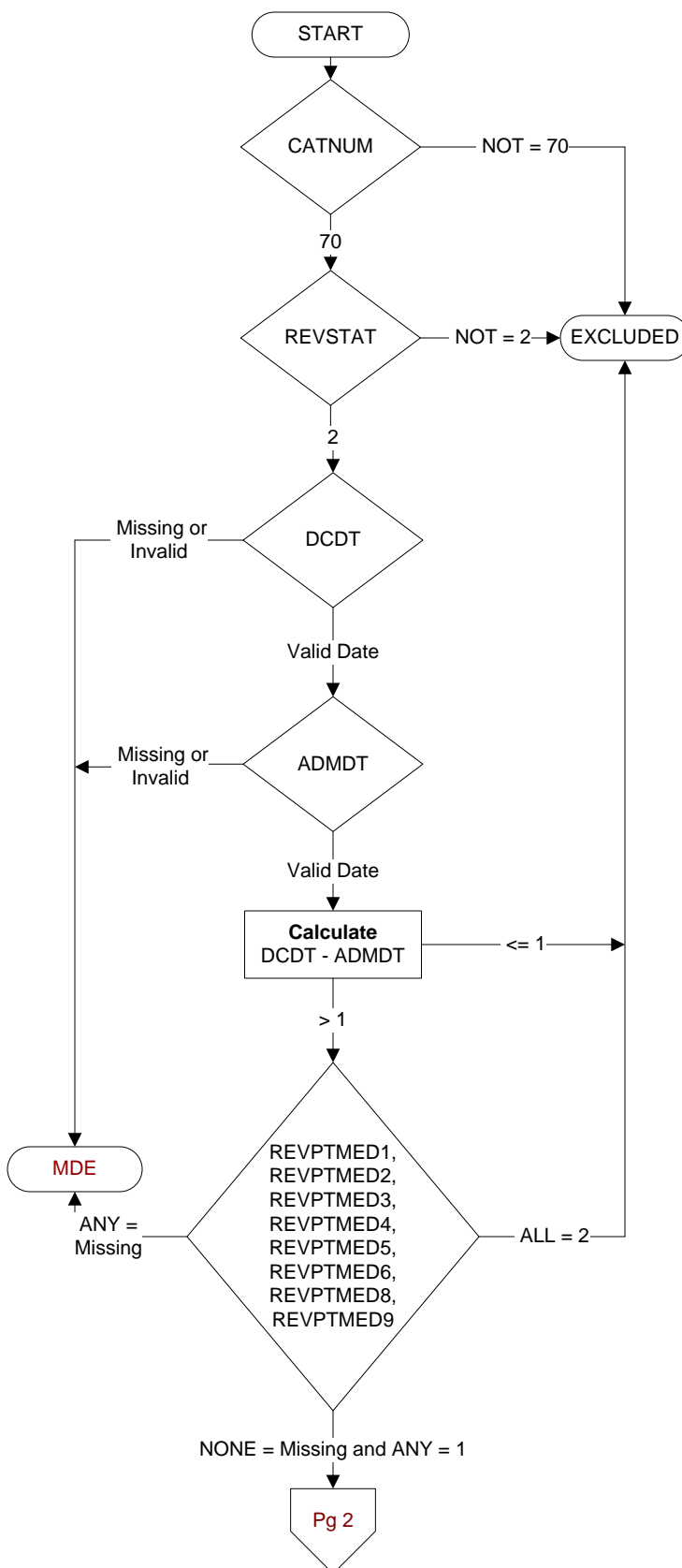
REVPTMED8. Inpatient Medications

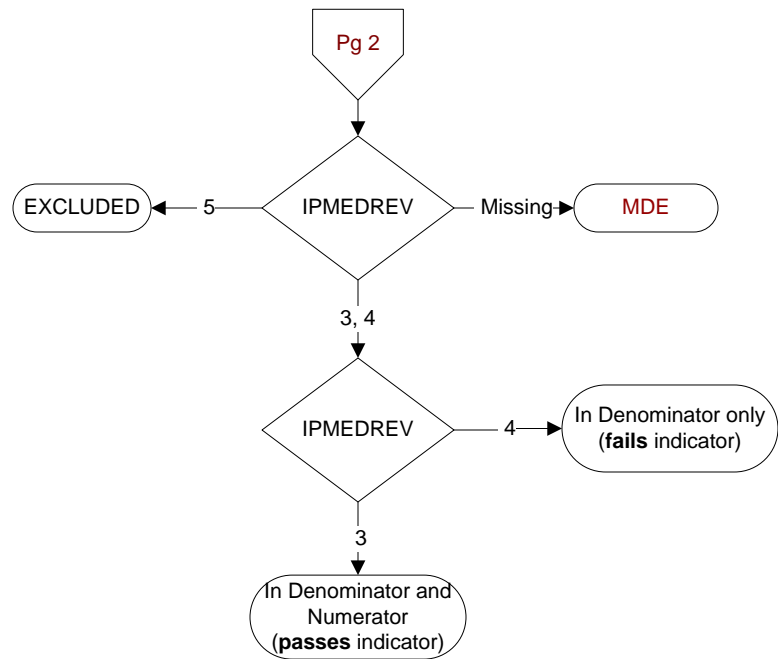
1. Yes
2. No

REVPTMED9. Allergies (Remote Facility **AND** Local Facility)

1. Yes
2. No

**MDE = Missing or
Invalid Data Exclusion
(data error)**





IPMEDREV (IP MedRec)

Upon admission or during the 24 hours after admission, is there documentation the available essential medication list components were reviewed with the patient/caregiver?

3. Yes

4. No: There is no documentation that the available essential medication list components were reviewed with the patient/caregiver

5. Documented the patient/caregiver refused or was unable to participate in review of essential medication list components