

Document Links:[HBPC Instrument](#)**CATNUM**

Sample cohort
HBPC – Home Based Primary Care

REVSTAT

REVIEW STATUS (not abstracted)

0. Abstraction has not begun
1. Abstraction in progress
2. Abstraction completed w/o errors
3. TVG failure (exclusion)
4. Record contains missing required answers
5. Administrative Exclusion

HCSTATUS (HBPC)

Counting from the most recent HBPC encounter within the study interval, enter the patient's status in regard to HBPC admission:

2. HBPC admission greater than or equal to 30 days but less than or equal to 1 year
3. HBPC admission greater than one year (>365 days from the admission date)

INPTADM (HBPC)

During the time frame from (computer display admisdt to admisdt + 30 days), did the record document the patient was hospitalized?

1. Yes
2. No

DOCHOSPCE (HBPC)

Is one of the following documented in the medical record?

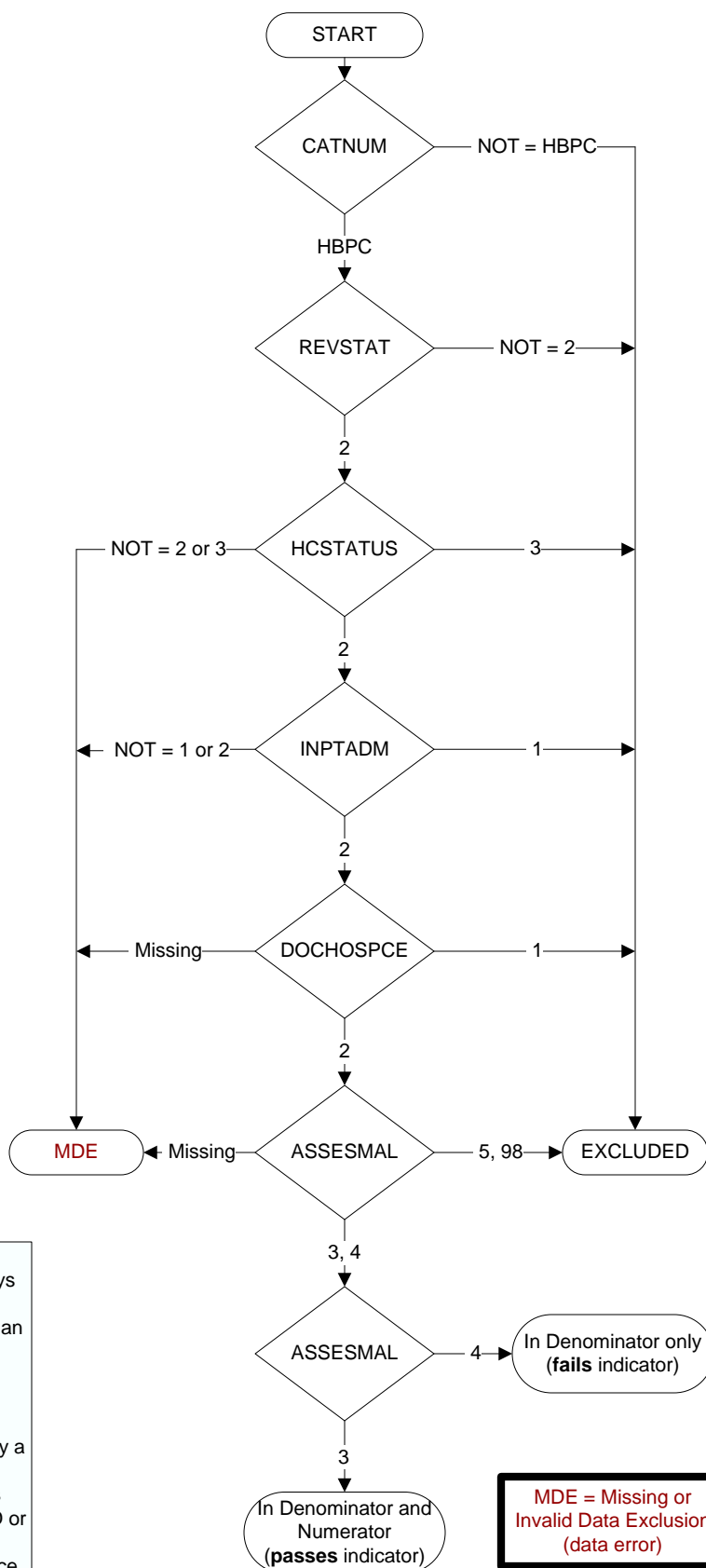
- The patient is enrolled in a VHA or community-based Hospice program
- The patient has a diagnosis of cancer of the liver, pancreas, or esophagus
- On the problem list it is documented the patient's life expectancy is less than 6 months

1. Yes
2. No

ASSESMAL (HBPC)

During the timeframe from (computer display admisdt – 30 days to admisdt + 30 days), was an assessment for malnutrition completed by a Registered Dietitian (RD) or Registered Dietician Nutritionist (RDN) during the initial face to face clinical encounter?

3. Yes, the HBPC RD or RDN initial nutrition assessment contains an assessment for malnutrition that was completed by a RD or RDN during the initial face to face encounter
4. No, the HBPC RD or RDN initial nutrition assessment does not contain an assessment for malnutrition completed by a RD or RDN during a face to face encounter
5. No, documented this HBPC program is rural and face to face encounter cannot be completed
98. No, an assessment for malnutrition was not completed by the HBPC RD or RDN and the initial nutrition assessment contains documentation that the patient/caregiver/guardian refused or declined to participate in the assessment for malnutrition.



**MDE = Missing or
Invalid Data Exclusion
(data error)**