

**Document Links:**[Transition of Care Instrument](#)**REVSTAT**

REVIEW STATUS (not abstracted)

0. Abstraction has not begun
1. Abstraction in progress
2. Abstraction completed w/o errors
3. TVG failure (exclusion)
4. Record contains missing required answers
5. Administrative Exclusion

**AGE** (calculated field)

Patient age on 09/30/18

**DOCHOSPCE**

At any time during the year prior to [(If readm = 2 computer to display admdt) through (computer to display dcdt)] OR [(if readm = 1, computer to display readmdt) through (computer to display stdyend)] is one of the following documented in the medical record?

- The patient is enrolled in a VHA or community-based Hospice program
- The patient has a diagnosis of cancer of the liver, pancreas, or esophagus
- On the problem list it is documented the patient's life expectancy is less than 6 months?

1. Yes
2. No

**READM**

During the timeframe from (computer to display dcdt) through (computer to display dcdt + 30 days) was there documentation of a readmission or direct transfer to an acute or non-acute inpatient care setting?

1. Yes
2. No

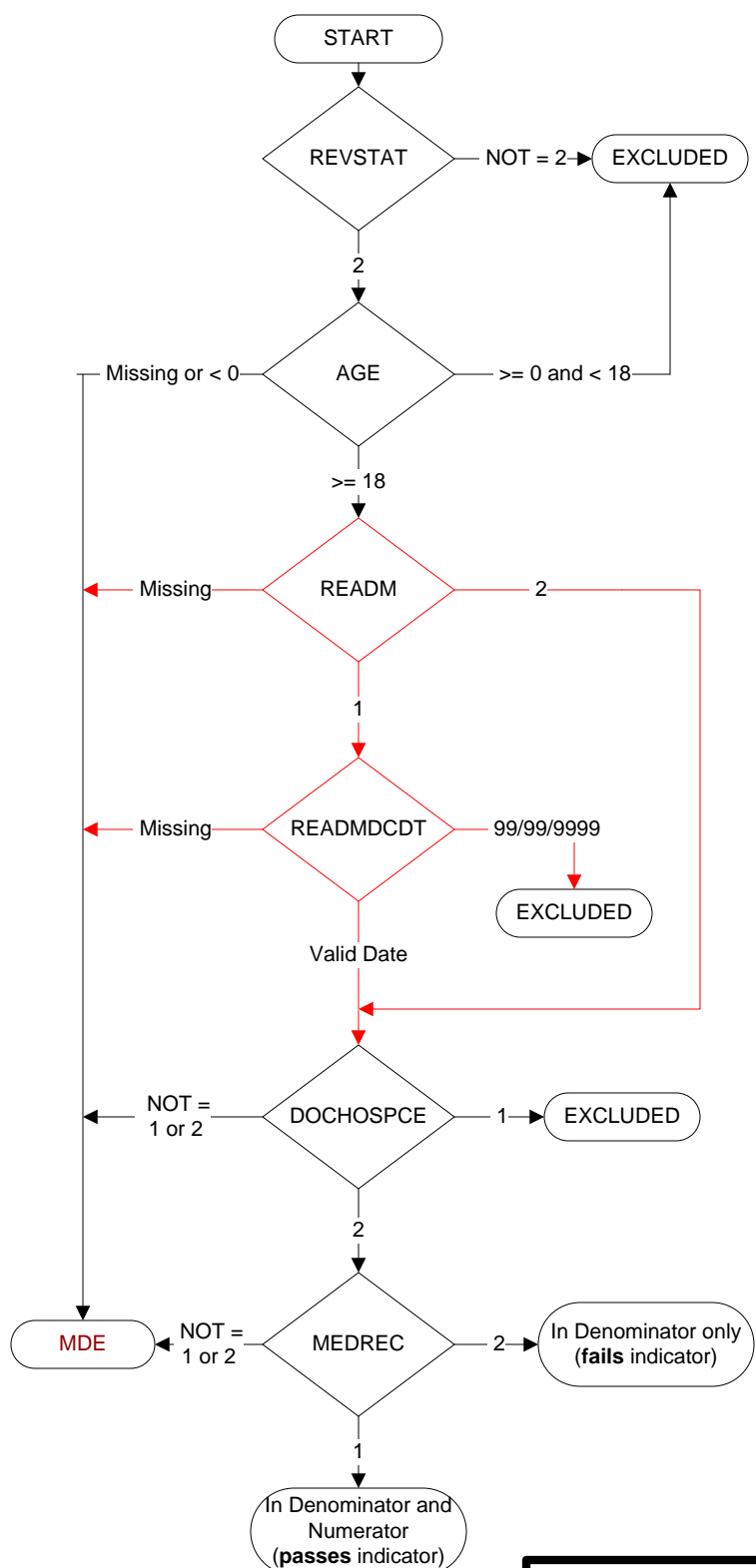
**READMDCDT**

Enter the discharge date for the most recent readmission that occurred on (computer to display readmdt).

**MEDREC**

During the timeframe from [(If readm = 2 computer to display dcdt) through (computer to display dcdt + 30 days) OR (if readm = 1, computer to display readmdcdt) through (computer to display readmdcdt + 30 days)] is there documentation in the outpatient record of medication reconciliation conducted by a physician, Advanced Practice Nurse (APN), Physician's Assistant (PA), clinical pharmacist or registered nurse.

1. Yes
2. No



**MDE = Missing or  
Invalid Data Exclusion  
(data error)**