

**Document Links:**[Transition of Care Instrument](#)**REVSTAT**

REVIEW STATUS (not abstracted)

0. Abstraction has not begun
1. Abstraction in progress
2. Abstraction completed w/o errors
3. TVG failure (exclusion)
4. Record contains missing required answers
5. Administrative Exclusion

**AGE** (calculated field)  
Patient age on 09/30/18

**READM**

During the timeframe from (computer to display dcddt) through (computer to display dcddt + 30 days) was there documentation of a readmission or direct transfer to an acute or non-acute inpatient care setting?

1. Yes
2. No

**READMDCDT**

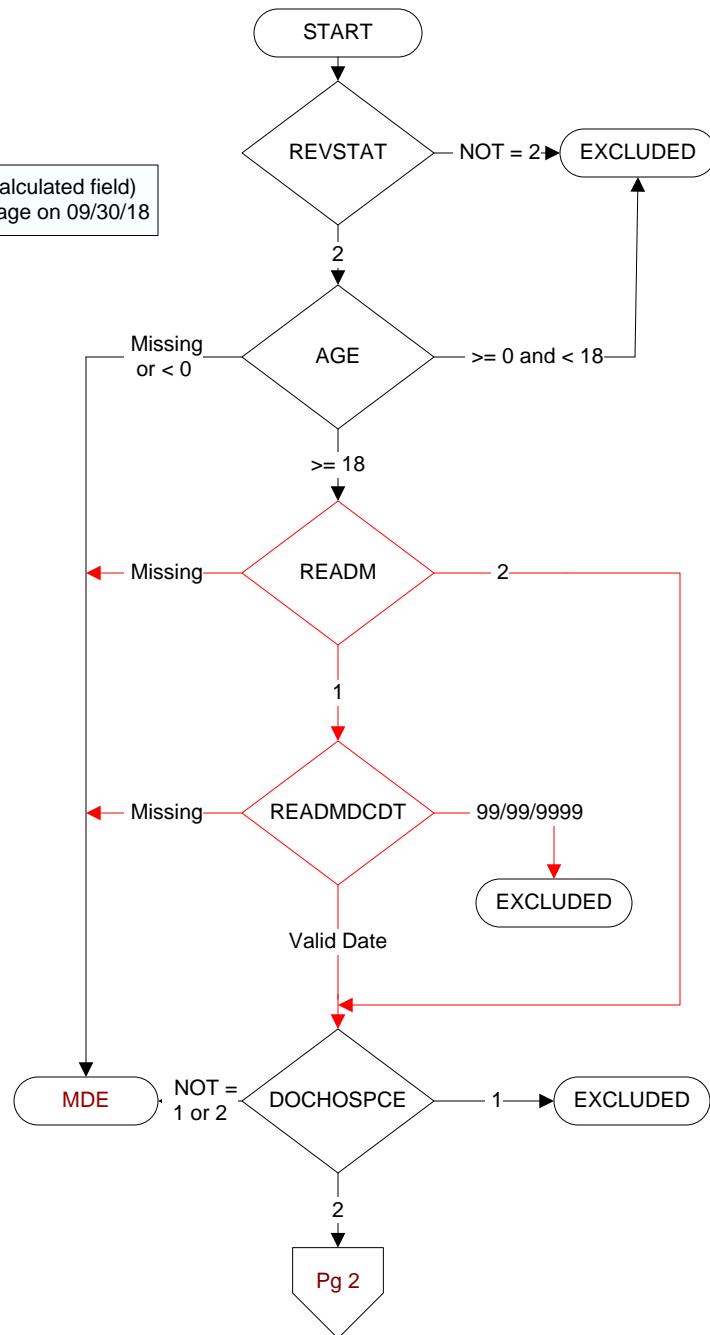
Enter the discharge date for the most recent readmission that occurred on (computer to display readmdt).

**DOCHOSPCE**

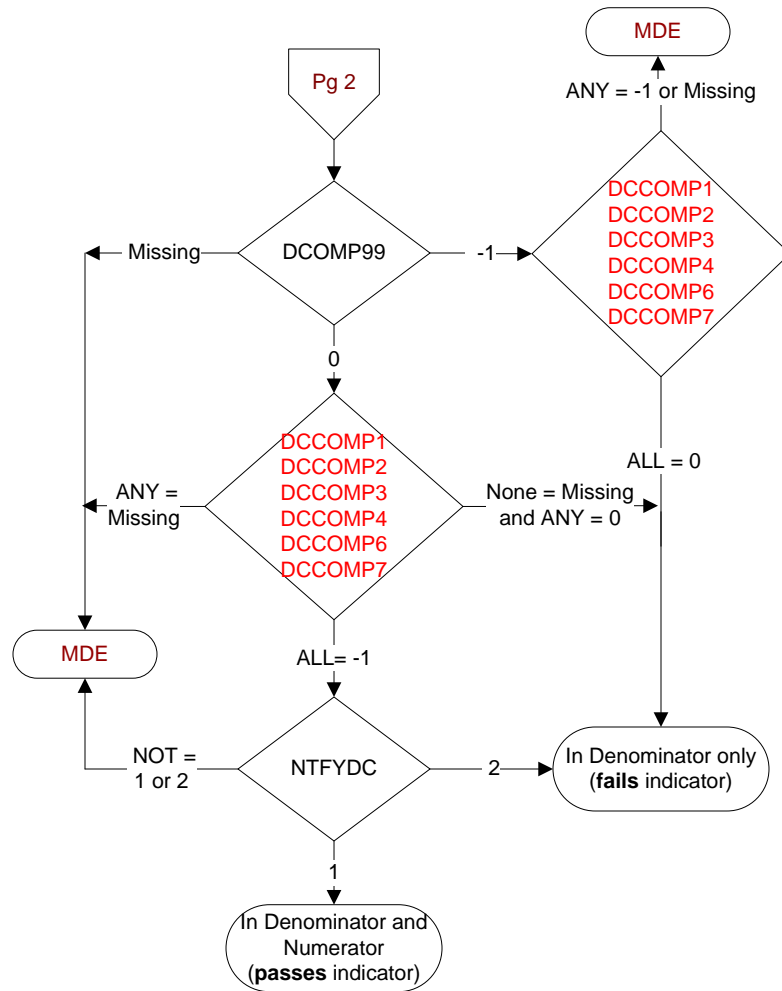
At any time during the year prior to [(If readm = 2 computer to display admtdt) through (computer to display dcddt)] OR [(if readm = 1, computer to display readmdt) through (computer to display stdyend)] is one of the following documented in the medical record?

- The patient is enrolled in a VHA or community-based Hospice program
- The patient has a diagnosis of cancer of the liver, pancreas, or esophagus
- On the problem list it is documented the patient's life expectancy is less than 6 months?

1. Yes
2. No



MDE = Missing or  
Invalid Data Exclusion  
(data error)



For the inpatient admission on (computer to display admdt), is there documentation the discharge information for the discharge on (If readm = 2, computer to display dcdt OR if readm = 1, computer to display readmcdt), includes the following required components?

**Select all that apply:**

- DCOMP1.** The practitioner responsible for the patient's care during the inpatient stay
- DCOMP2.** Procedures or treatment provided
- DCOMP3.** Diagnoses at discharge
- DCOMP4.** Current medication list
- DCOMP6.** Testing results, documentation of pending tests or no tests pending
- DCOMP7.** Instructions to the PCP or ongoing care provider for patient care
- DCOMP99.** None of the above

**NTFYDC**

For the inpatient admission on (computer to display admdt), is there documentation in the record of receipt of discharge information on (If readm = 2, computer to display dcdt to dcdt + 1 day OR if readm = 1, computer to display readmcdt to readmcdt + 1 day).

- 1. Yes
- 2. No