

**Document Links:**[CGPI Validation Module](#)[CGPI PI Module](#)**CATNUM**

Sample category

- 16. AMI - Outpatient visit
- 36. SCI Dx
- 48. Female, age 20-69
- 50. Random Sample
- 51. Random Sample MH
- 54. Frail/Elderly
- 60. DM Outpatient
- 61. Inpatient SCI
- 68. Contract CBOC

**SEENYR** (Validation)

Was the **veteran** seen within the last twelve months by a physician, NP, PA, Psychologist, or Clinical Nurse Specialist in one of the "Nexus clinics"?

**Within the last 12 months = twelve months from the first day of the study interval to the end of the study interval**

- 1. yes
- 2. no

**REVSTAT**

REVIEW STATUS (not abstracted)

- 0. Abstraction has not begun
- 1. Abstraction in progress
- 2. Abstraction completed w/o errors
- 3. TVG failure (exclusion)
- 4. Record contains missing required answers (error record)
- 5. Administrative exclusion from all measures

**DOCHOSPCE** (PI module)Is one of the following documented in the medical record?

- The patient is enrolled in a VHA or community-based Hospice program
- The patient has a diagnosis of cancer of the liver, pancreas, or esophagus
- On the problem list it is documented the patient's life expectancy is less than 6 months?

- 1. Yes
- 2. No

**TOBSCRN18** (PI)

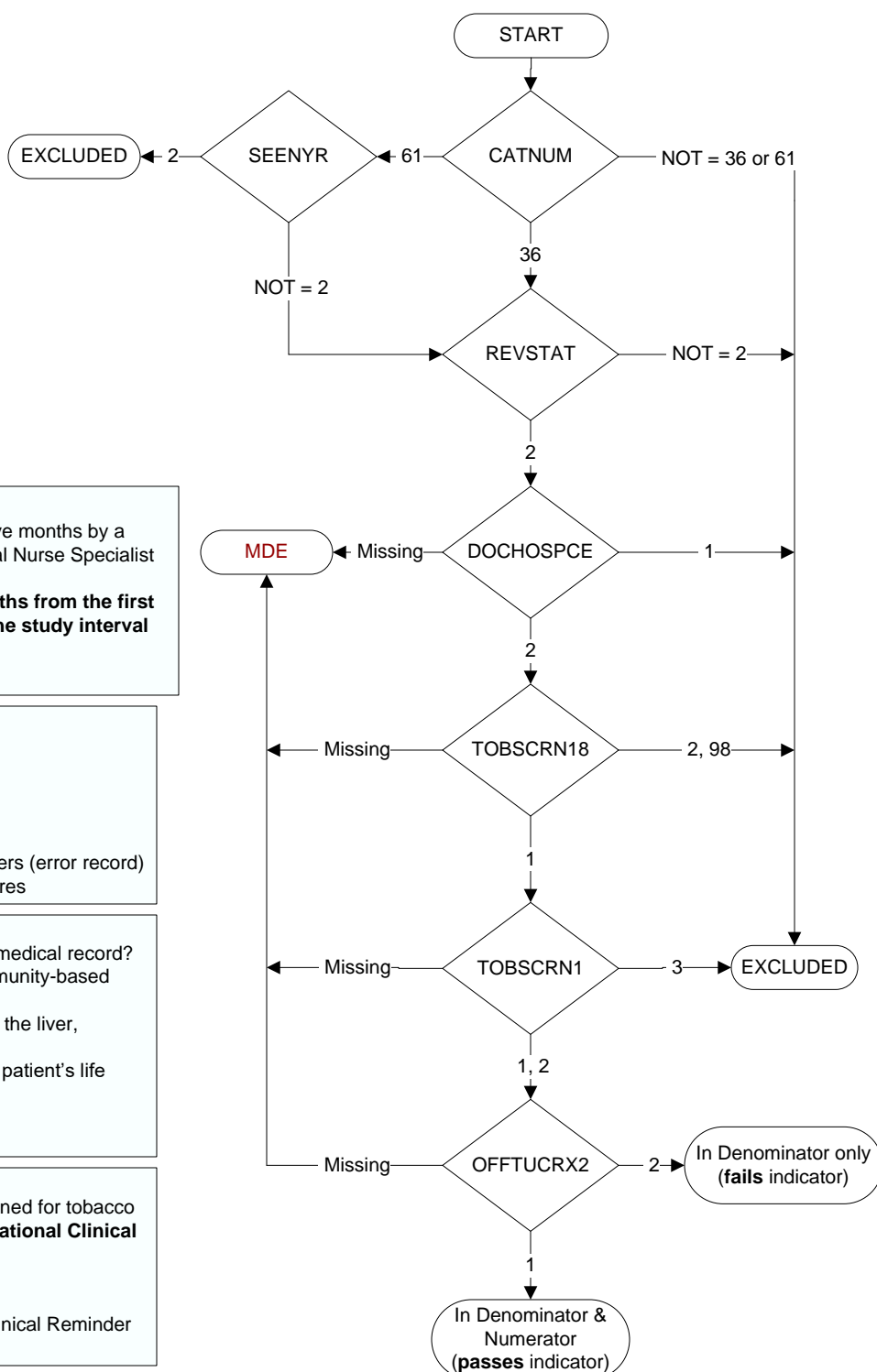
During the past year was the patient screened for tobacco use by an acceptable provider using the **National Clinical Reminder for Tobacco Use**?

- 1. Yes
- 2. No
- 98. Patient declined to answer National Clinical Reminder for Tobacco Use screening questions

**TOBSCRN1** (PI)

Enter the response to Tobacco Use Screening question #1 "Do you smoke cigarettes, or use tobacco every day, some days, or not at all?"

- 1. Every Day
- 2. Some Days
- 3. Not at all



**MDE = Missing or  
Invalid Data Exclusion  
(data error)**