

Document Links:[HBPC Instrument](#)**CATNUM**

Sample category
HBPC – Home Based Primary Care

REVSTAT

REVIEW STATUS (not abstracted)

- 0. Abstraction has not begun
- 1. Abstraction in progress
- 2. Abstraction completed w/o errors
- 3. TVG failure (exclusion)
- 4. Record contains missing required answers
- 5. Administrative exclusion from all measures

DOCHOSPCE

Is one of the following documented in the medical record?

- The patient is enrolled in a VHA or community-based Hospice program
- The patient has a diagnosis of cancer of the liver, pancreas or esophagus
- On the problem list it is documented the patient's life expectancy is less than 6 months

- 1. Yes
- 2. No

BNMRTRNS

Is there documentation in the medical record the patient had a bone marrow transplant during the past year?

- 1. Yes
- 2. No

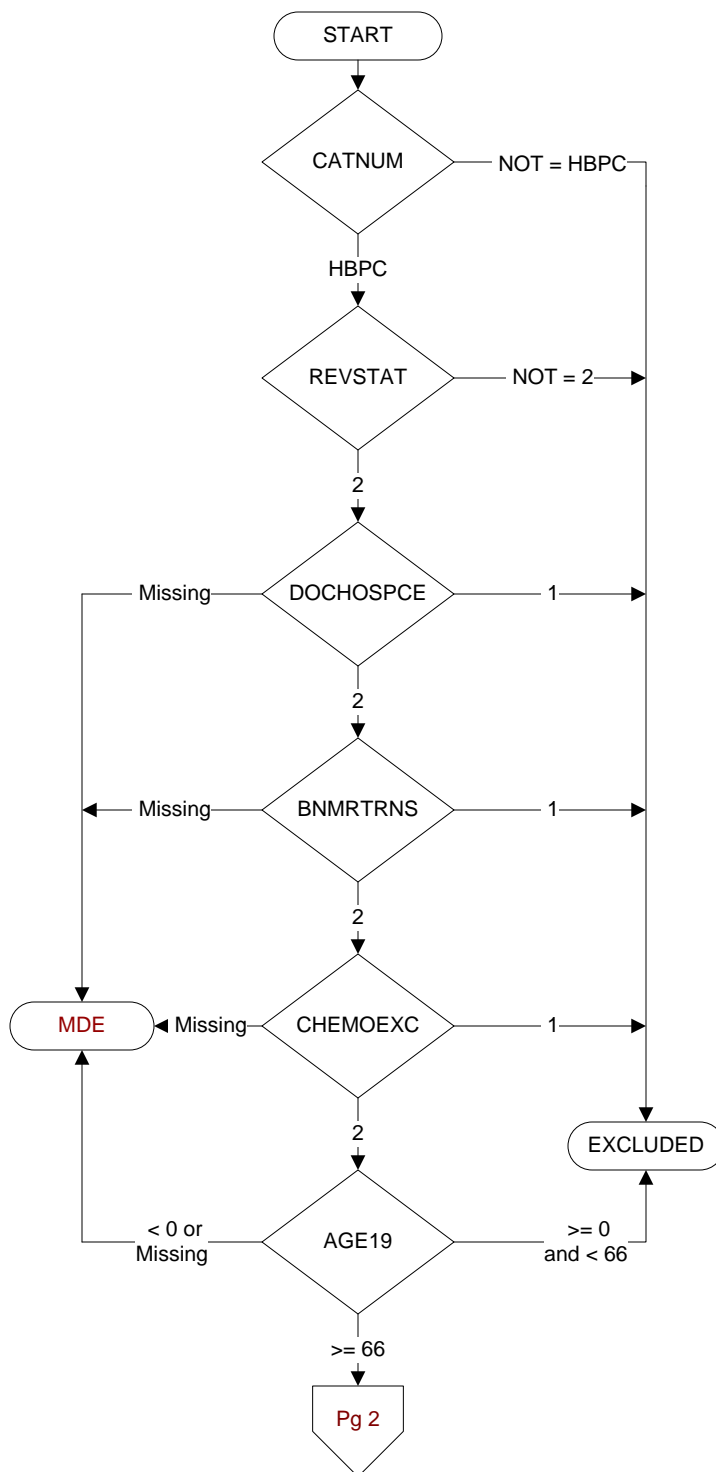
CHEMOEXC

Is there documentation in the medical record the patient received chemotherapy during the past year?

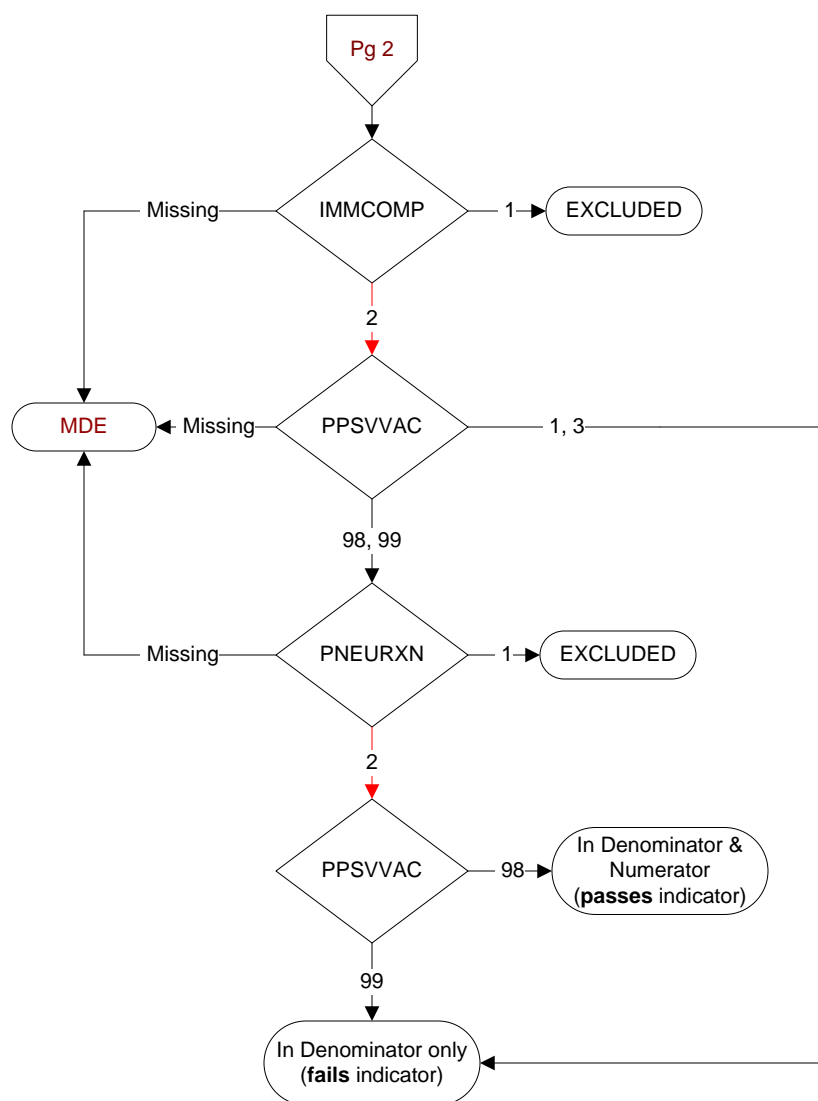
- 1. Yes
- 2. No

AGE19

Calculated field (01/01/19 - BIRTHDT).



MDE = Missing or
Invalid Data Exclusion
(data error)

**IMMCOMP** (PI Module)

At any time in the patient's history through (computer to display stdyend) is there documentation of any of the following in the medical record?

- Immunocompromising conditions
- Anatomic or functional asplenia
- Sickle cell disease and HB-S disease
- Cerebrospinal fluid leak(s)
- Cochlear implant(s)

1. Yes
2. No

PPSVVAC (PI Module)

At any time, not later than the study end date, did the veteran receive the **PPSV23** (or pneumococcal) vaccination, either as an inpatient or outpatient?

1. received **PPSV23** (or pneumococcal) vaccination from VHA
3. received **PPSV23** (or pneumococcal) vaccination from private sector provider
98. patient refused **PPSV23** (or pneumococcal) vaccination
99. no documentation patient received **PPSV23** (or pneumococcal) vaccination

PNEURXN (PI Module)

Is there documentation in the medical record of a prior anaphylactic reaction to a pneumococcal vaccine?

1. Yes
2. No