

Document Links:

[CGPI Validation Module](#)

[CGPI PI Module](#)

CATNUM

Sample category
16. AMI - Outpatient visit
36. SCI Dx
48. Female, age 20-69
50. Random Sample
51. Random Sample MH
54. Frail/Elderly
60. DM Outpatient
61. Inpatient SCI
68. Contract CBOC

SEENYR (Validation)

Was the **veteran** seen within the last twelve months by a physician, NP, PA, Psychologist, or Clinical Nurse Specialist in one of the "Nexus clinics"?

Within the last 12 months = twelve months from the first day of the study interval to the end of the study interval

1. yes
2. no

REVSTAT

REVIEW STATUS (not abstracted)

0. Abstraction has not begun
1. Abstraction in progress
2. Abstraction completed w/o errors
3. TVG failure (exclusion)
4. Record contains missing required answers (error record)
5. Administrative exclusion from all measures

DOCHOSPCE (PI module)

Is **one** of the following documented in the medical record?

- The patient is enrolled in a VHA or community-based Hospice program
- The patient has a diagnosis of cancer of the liver, pancreas, or esophagus
- **On the problem list** it is documented the patient's life expectancy is less than 6 months?

1. Yes
2. No

TOBSCRN18 (PI)

During the past year was the patient screened for tobacco use by an acceptable provider using the **National Clinical Reminder for Tobacco Use**?

1. Yes
2. No
98. Patient declined to answer National Clinical Reminder for Tobacco Use screening questions

TOBSCRN1 (PI)

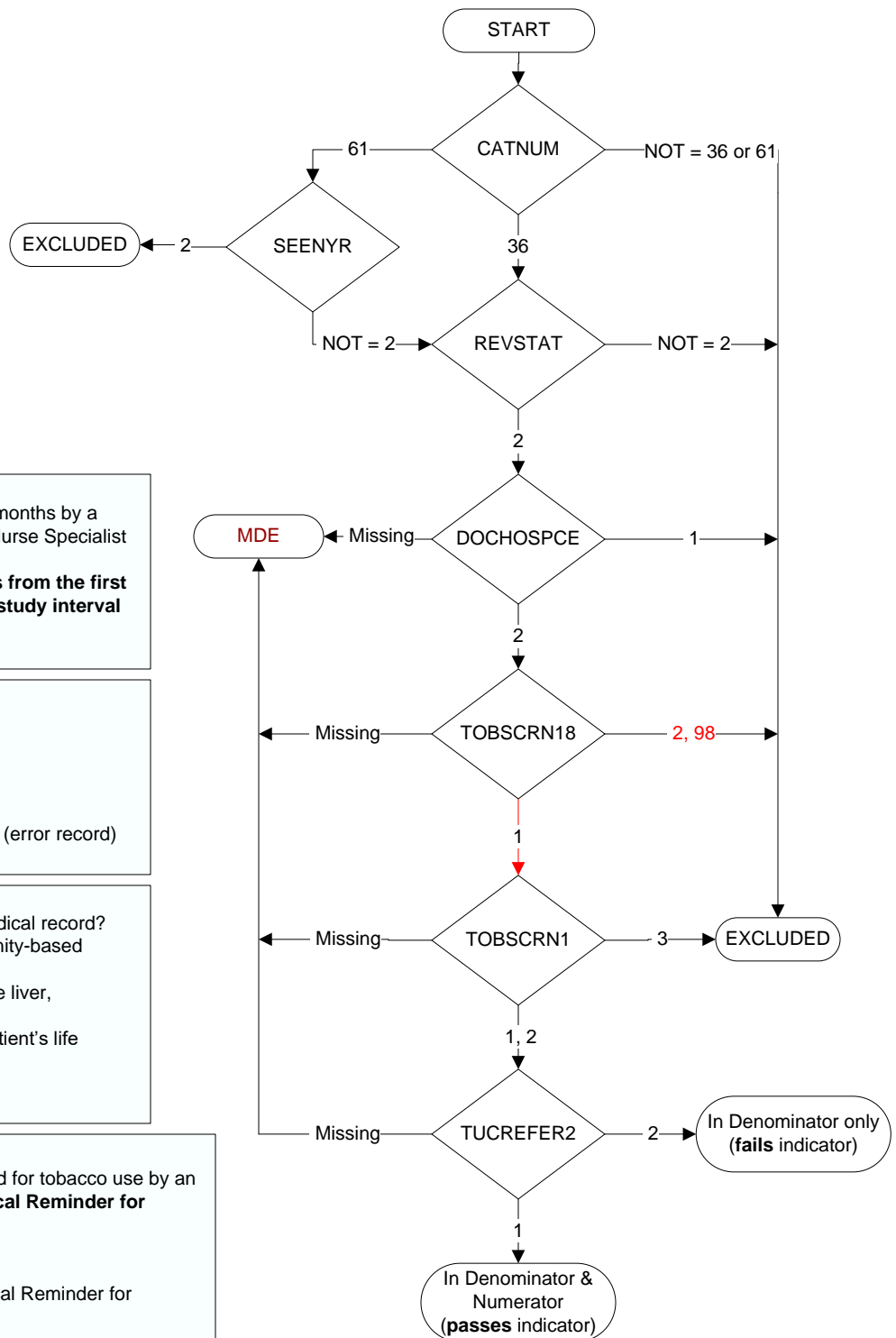
Enter the response to Tobacco Use Screening question #1 "Do you smoke cigarettes, or use tobacco every day, some days, or not at all?"

1. Every Day
2. Some Days
3. Not at all

TUCREFER2 (PI)

During the past year did the provider provide information about behavioral counseling or treatment options other than medication to assist patient with quitting smoking or using tobacco using the National Clinical Reminder for Tobacco Use?

1. Yes
2. No



MDE = Missing or Invalid Data Exclusion (data error)