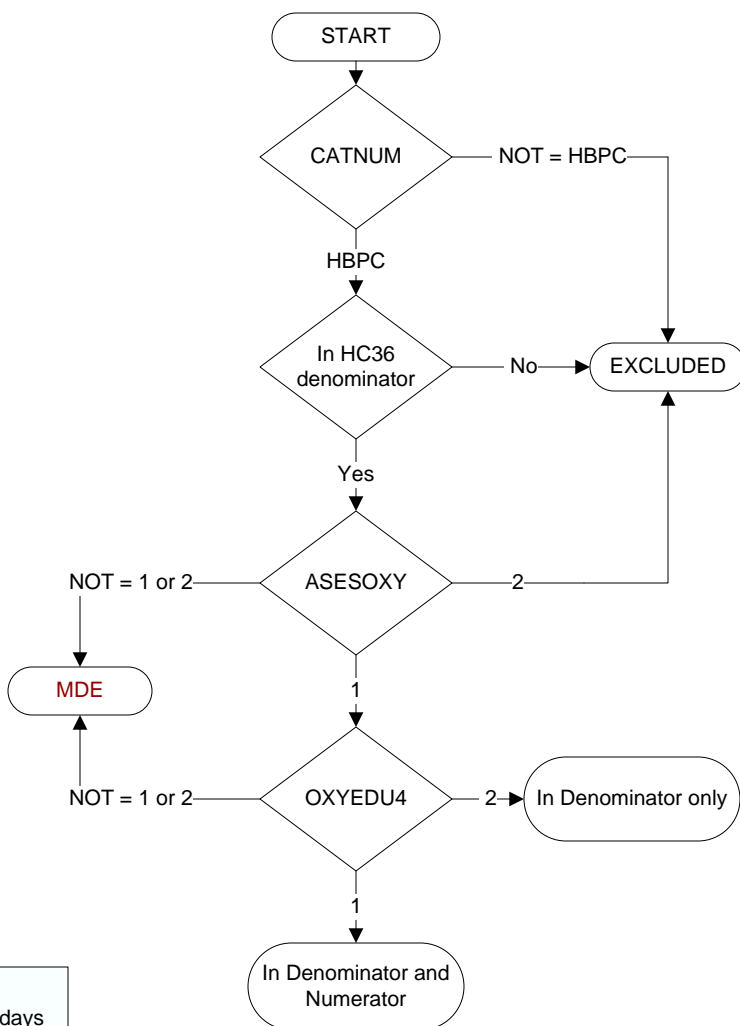


Document Links:[HBPC Instrument](#)

**MDE = Missing or
Invalid Data Exclusion
(data error)**

**CATNUM**

Sample cohort
HBPC – Home Based Primary Care

ASESOXY (HBPC)

During the time frame from (computer to display admisdt – 30 days to admisdt + 30 days) at a face-to-face encounter, was a home oxygen safety risk assessment documented by a HBPC team member to include all of the following components?

- Whether there are smoking materials in the home,
- Whether or not the home has functioning smoke detectors, and
- Whether there are other fire safety risks in the home, such as the potential for open flames

1. Yes
2. No

During the HBPC team face-to-face encounter on (computer to display asesoxdyt), did the HBPC team member inform and educate the patient/caregiver on home oxygen safety to include:

OXYEDU1. The findings of the oxygen safety risk assessment

1. Yes
2. No

OXYEDU2. The causes of fire

1. Yes
2. No

OXYEDU3. Fire risks for neighboring residences and buildings

1. Yes
2. No

OXYEDU4. Precautions that can prevent fire-related injuries

1. Yes
2. No