

Document Links:[HBPC Instrument](#)**CATNUM**

Sample cohort

HBPC – Home Based Primary Care

REVSTAT

REVIEW STATUS (not abstracted)

0. Abstraction has not begun
1. Abstraction in progress
2. Abstraction completed w/o errors
3. TVG failure (exclusion)
4. Record contains missing required answers
5. Administrative Exclusion

HCSTATUS (HBPC)

Counting from the most recent HBPC encounter within the study interval, enter the patient's status in regard to HBPC admission:

2. HBPC admission greater than or equal to 30 days but less than or equal to 1 year
3. HBPC admission greater than one year (>365 days from the admission date)

INPTADM (HBPC)

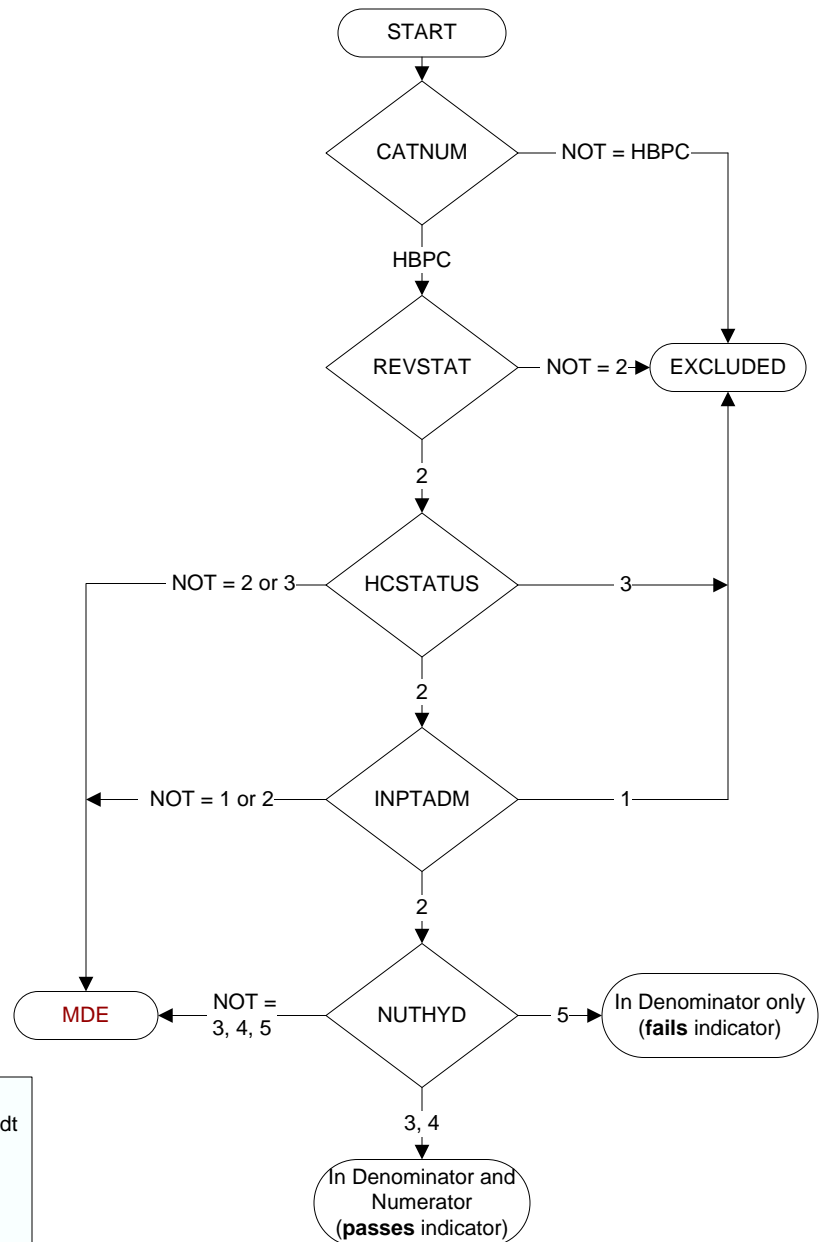
During the time frame from (computer display admisdt to admisdt + 30 days), did the record document the patient was hospitalized?

1. Yes
2. No

NUTHYD (HBPC)

During the time frame from (computer to display admisdt – 30 days to admisdt + 30 days), does the record document assessment of the patient's nutritional and hydration needs by a registered or clinical dietitian during a face-to-face or clinical video teleconference (CVT) encounter?

3. Yes, assessment of patient's nutritional and hydration needs by a registered or clinical dietitian was documented during a **face-to-face encounter**.
4. Yes, assessment of patient's nutritional and hydration needs by a registered or clinical dietitian was documented during a **CVT encounter**.
5. No assessment of the patient's nutritional and hydration needs was documented by a registered or clinical dietitian during a face-to-face or clinical video teleconference (CVT) encounter.



**MDE = Missing or
Invalid Data Exclusion
(data error)**