

Document Links:

[Transition of Care Instrument](#)

REVSTAT

REVIEW STATUS (not abstracted)

0. Abstraction has not begun
1. Abstraction in progress
2. Abstraction completed w/o errors
3. TVG failure (exclusion)
4. Record contains missing required answers
5. Administrative Exclusion

AGE (calculated field)

Patient age on 09/30/18

DOCHOSPCE

Is one of the following documented in the medical record?

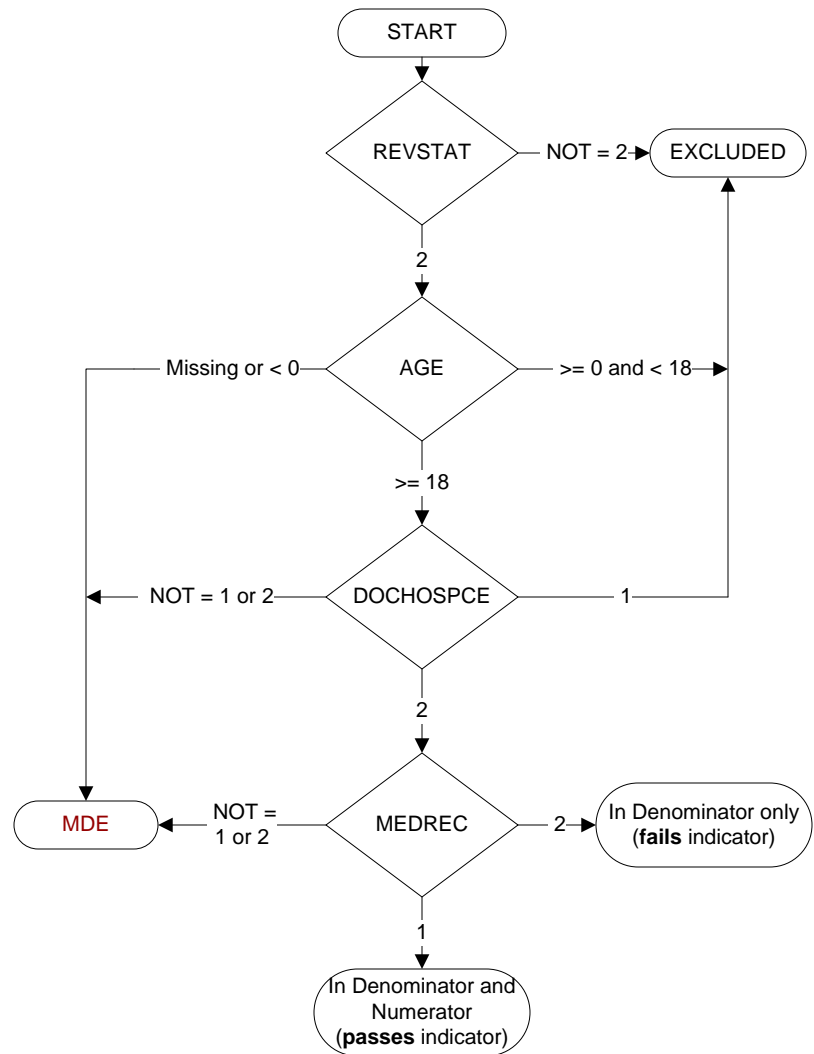
- The patient is enrolled in a VHA or community-based Hospice program
- The patient has a diagnosis of cancer of the liver, pancreas, or esophagus
- On the problem list it is documented the patient's life expectancy is less than 6 months?

1. Yes
2. No

MEDREC

During the timeframe from [(If readm = 2 computer to display dcdt) through (computer to display dcdt + 30 days) OR (if readm = 1, computer to display readmcdt) through (computer to display readmcdt + 30 days)] is there documentation in the outpatient record of medication reconciliation conducted by a physician, Advanced Practice Nurse (APN), Physician's Assistant (PA), clinical pharmacist or registered nurse.

1. Yes
2. No



MDE = Missing or
Invalid Data Exclusion
(data error)