

**Document Links:**[Transition of Care Instrument](#)**REVSTAT**

REVIEW STATUS (not abstracted)

0. Abstraction has not begun
1. Abstraction in progress
2. Abstraction completed w/o errors
3. TVG failure (exclusion)
4. Record contains missing required answers
5. Administrative Exclusion

**AGE** (calculated field)

Patient age on 09/30/18

**DOCHOSPCE**Is one of the following documented in the medical record?

- The patient is enrolled in a VHA or community-based Hospice program
- The patient has a diagnosis of cancer of the liver, pancreas, or esophagus
- On the problem list it is documented the patient's life expectancy is less than 6 months?

1. Yes
2. No

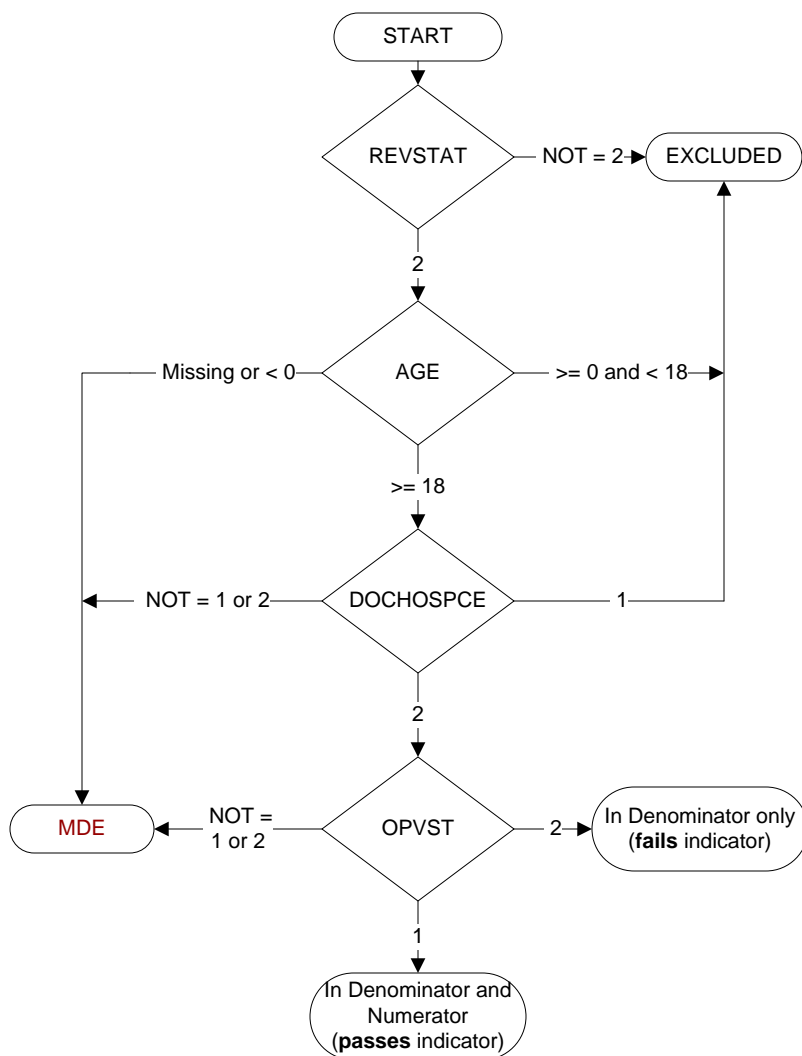
**OPVST**

During the timeframe from [(If readm = 2 computer to display dcdt + 1 day) through (computer to display dcdt + 30 days)] OR [(if readm = 1, computer to display readm dcdt + 1 day) through (computer to display readm dcdt + 30 days)] was there documentation of an outpatient visit with the patient's primary provider?

An outpatient visit may include:

- A face to face outpatient visit
- Telehealth visit
- Telephone visit
- Transitional care management services

1. Yes
2. No



**MDE = Missing or  
Invalid Data Exclusion  
(data error)**