

Document Links:[HBPC Instrument](#)**CATNUM**

Sample cohort
HBPC – Home Based Primary Care

REVSTAT

REVIEW STATUS (not abstracted)
0. Abstraction has not begun
1. Abstraction in progress
2. Abstraction completed w/o errors
3. TVG failure (exclusion)
4. Record contains missing data (errors)
5. Administrative Exclusion

HCSTATUS (HBPC)

Counting from the most recent HBPC encounter within the study interval, enter the patient's status in regard to HBPC admission:
2. HBPC admission greater than or equal to 30 days but less than or equal to 1 year
3. HBPC admission greater than one year (>365 days from the admission date)

NOEDRSN (HBPC)

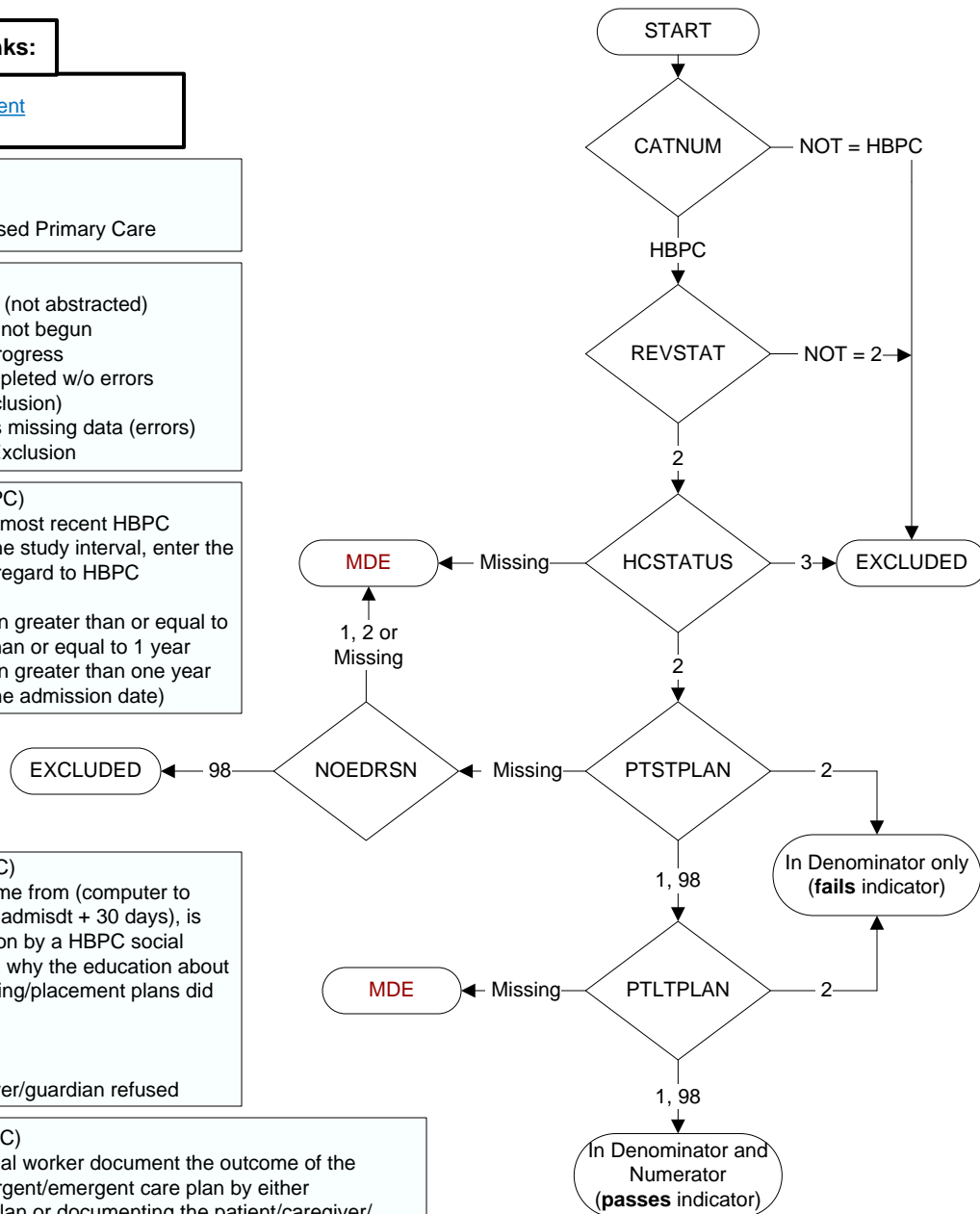
During the timeframe from (computer to display admisdt to admisdt + 30 days), is there documentation by a HBPC social worker of a reason why the education about alternative caregiving/placement plans did not take place?
1. Yes
2. No
98. Patient/caregiver/guardian refused

PTSTPLAN (HBPC)

Did the HBPC social worker document the outcome of the discussion of an urgent/emergent care plan by either documenting the plan or documenting the patient/caregiver/guardian's choice to decline making a plan?
1. Yes, HBPC social worker documented the plan for urgent/emergent care
2. No, HBPC social worker did not document the plan for urgent/emergent care
98. Patient/caregiver/guardian refused/declined to make a plan for urgent/emergent care.

PTLTPLAN (HBPC)

Did the HBPC social worker document the outcome of the discussion of long term care planning by either documenting the plan or documenting the patient/caregiver/guardian's choice to decline making a plan?
1. Yes, HBPC social worker documented the plan for long term care
2. No, HBPC social worker did not document the plan for long term care
98. Patient/caregiver/guardian refused/declined to make a plan for long term care



**MDE = Missing or
Invalid Data Exclusion
(data error)**