

Document Links:[CGPI Validation Module](#)[CGPI PI Module](#)[CGPI Core Module](#)[CGPI CVD Module](#)**CATNUM**

Sample category

- 16. AMI - Outpatient visit
- 36. SCI Dx
- 48. Female, age 20-69
- 50. Random Sample
- 51. Random Sample MH
- 54. Frail/Elderly
- 60. DM Outpatient
- 61. Inpatient SC
- 68. Contract CBOC

FEFLAG (rcvd on pull list)

FE case flagged for CGPI review / scoring?

- 0. No
- 1. Yes

REVSTAT

REVIEW STATUS (not abstracted)

- 0. Abstraction has not begun
- 1. Abstraction in progress
- 2. Abstraction completed w/o errors
- 3. TVG failure (exclusion)
- 4. Record contains missing required answers (error record)
- 5. Administrative exclusion from all measures

DOCHOSPCE (PI module)Is one of the following documented in the medical record?

- The patient is enrolled in a VHA or community-based Hospice program
 - The patient has a diagnosis of cancer of the liver, pancreas, or esophagus
 - On the problem list it is documented the patient's life expectancy is less than 6 months?
- 1. Yes
 - 2. No

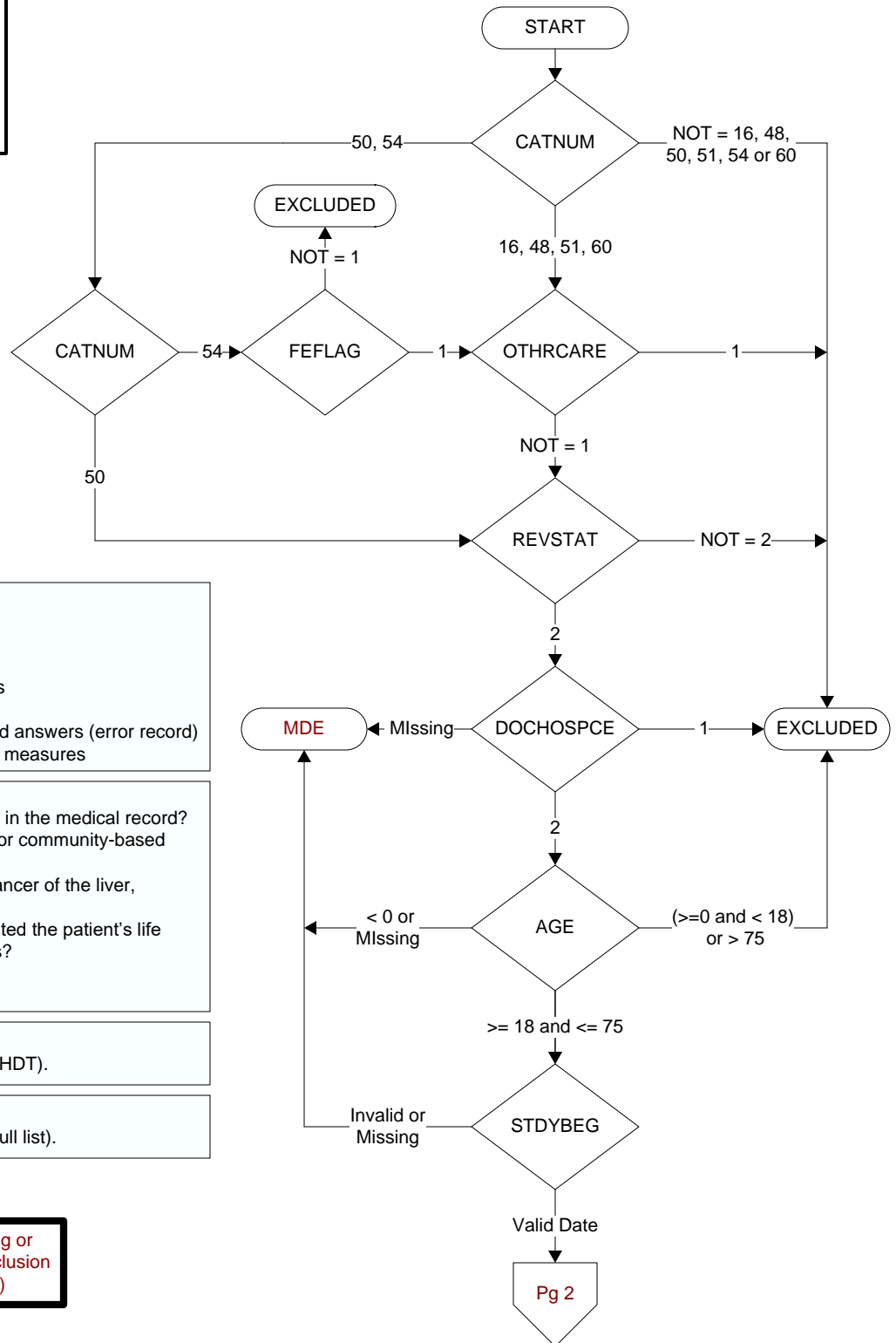
AGE

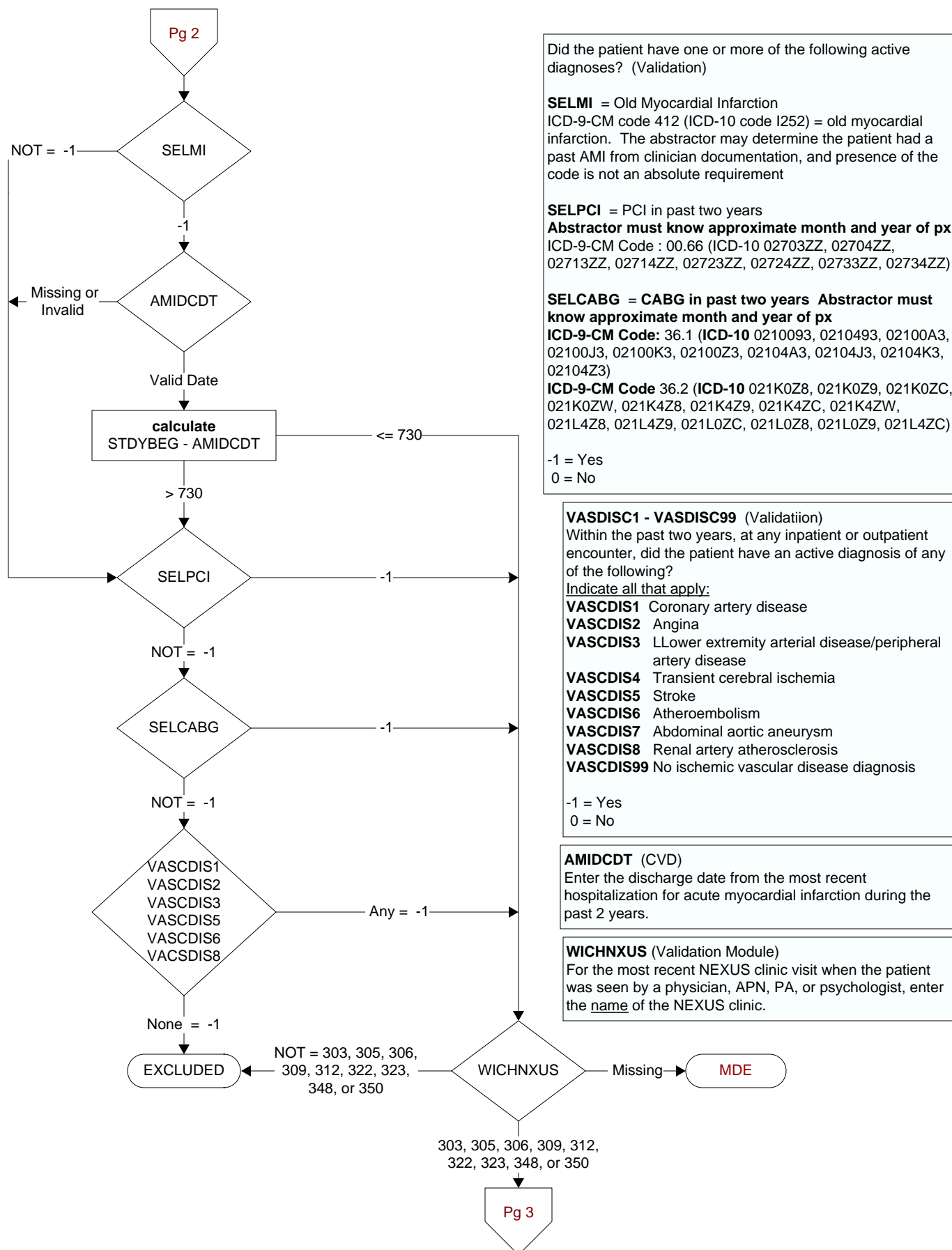
Calculated field (NEXUSDT - BIRTHDT).

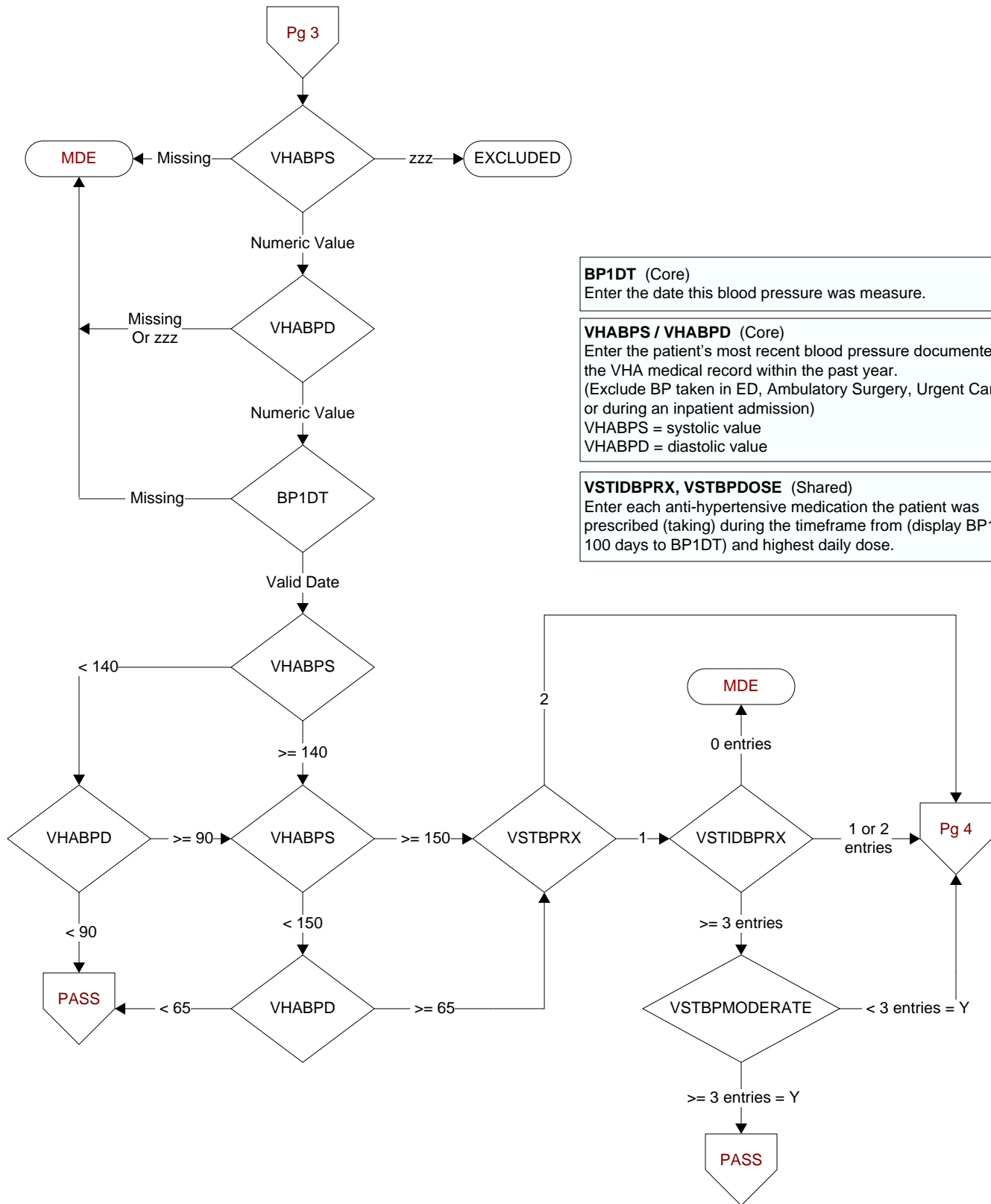
STDYBEG

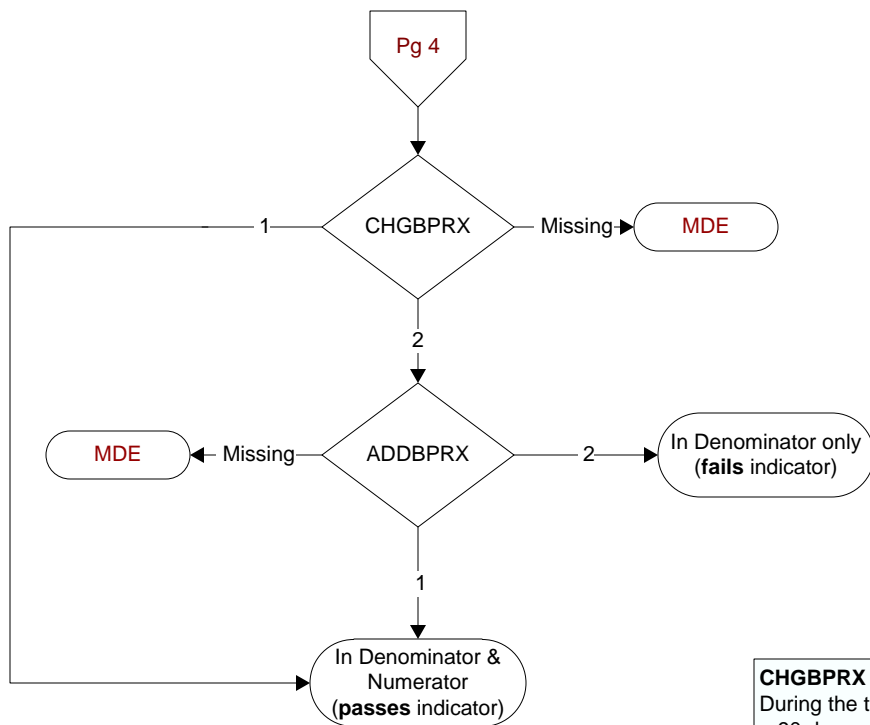
First day of study period (rcvd on pull list).

**MDE = Missing or
Invalid Data Exclusion
(data error)**









CHGBPRX (Shared)

During the timeframe from (display BP1DT + 1 day to BP1DT + 90 days and <= REVDTE), was a change made to the daily dose of an anti-hypertensive medication(s)?

1. Yes
2. No

ADDBPRX (Shared)

During the timeframe from (display BP1DT + 1 day to BP1DT + 90 days and <= REVDTE) , was a new anti-hypertensive medication added?

1. Yes
2. No