

**Document Links:**

[CGPI Validation Module](#)

[CGPI PI Module](#)

[CGPI Core Module](#)

[CGPI CVD Module](#)

**CATNUM**

Sample category  
16. AMI - Outpatient visit  
36. SCI Dx  
48. Female, age 20-69  
50. Random Sample  
51. Random Sample MH  
54. Frail/Elderly  
60. DM Outpatient  
61. Inpatient SC  
68. Contract CBOC

**FEFLAG** (rcvd on pull list)

FE case flagged for CGPI review / scoring?  
0. No  
1. Yes

**STDYEND**

Last day of study period  
(rcvd on pull list).

**OTHCARE** (Validation)

Is there evidence in the medical record that within the past two years, the patient refused VHA Primary Care and is receiving ONLY his/her primary care in a non-VHA setting?  
1. yes  
2. no

**REVSTAT**

REVIEW STATUS (not abstracted)  
0. Abstraction has not begun  
1. Abstraction in progress  
2. Abstraction completed w/o errors  
3. TVG failure (exclusion)  
4. Record contains missing required answers (error record)  
5. Administrative exclusion from all measures

**DOCHOSPCE** (PI module)

Is one of the following documented in the medical record?  
-- The patient is enrolled in a VHA or community-based Hospice program  
-- The patient has a diagnosis of cancer of the liver, pancreas, or esophagus  
-- On the problem list it is documented the patient's life expectancy is less than 6 months?  
1. Yes  
2. No

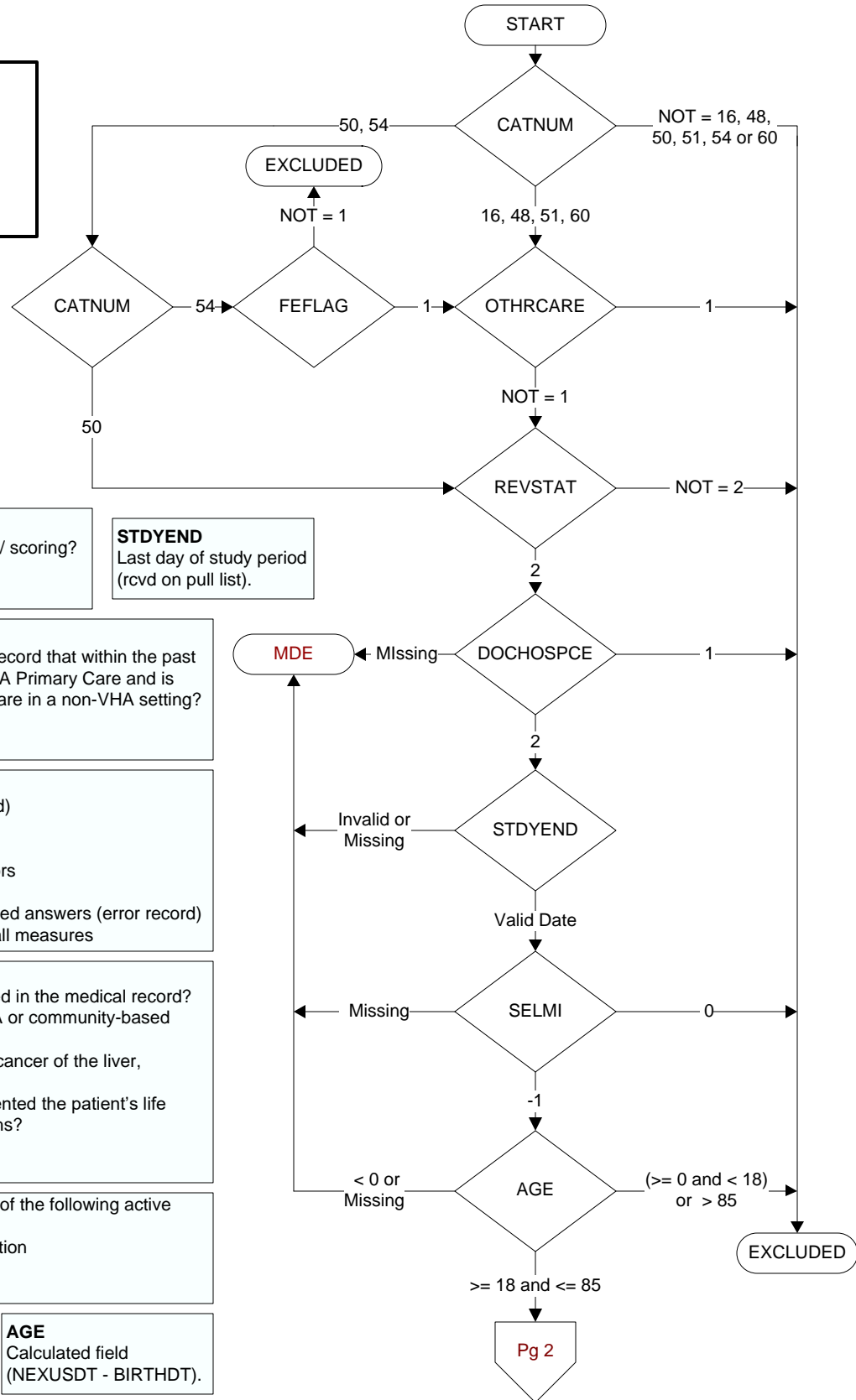
Did the patient have one or more of the following active diagnoses? (Validation)

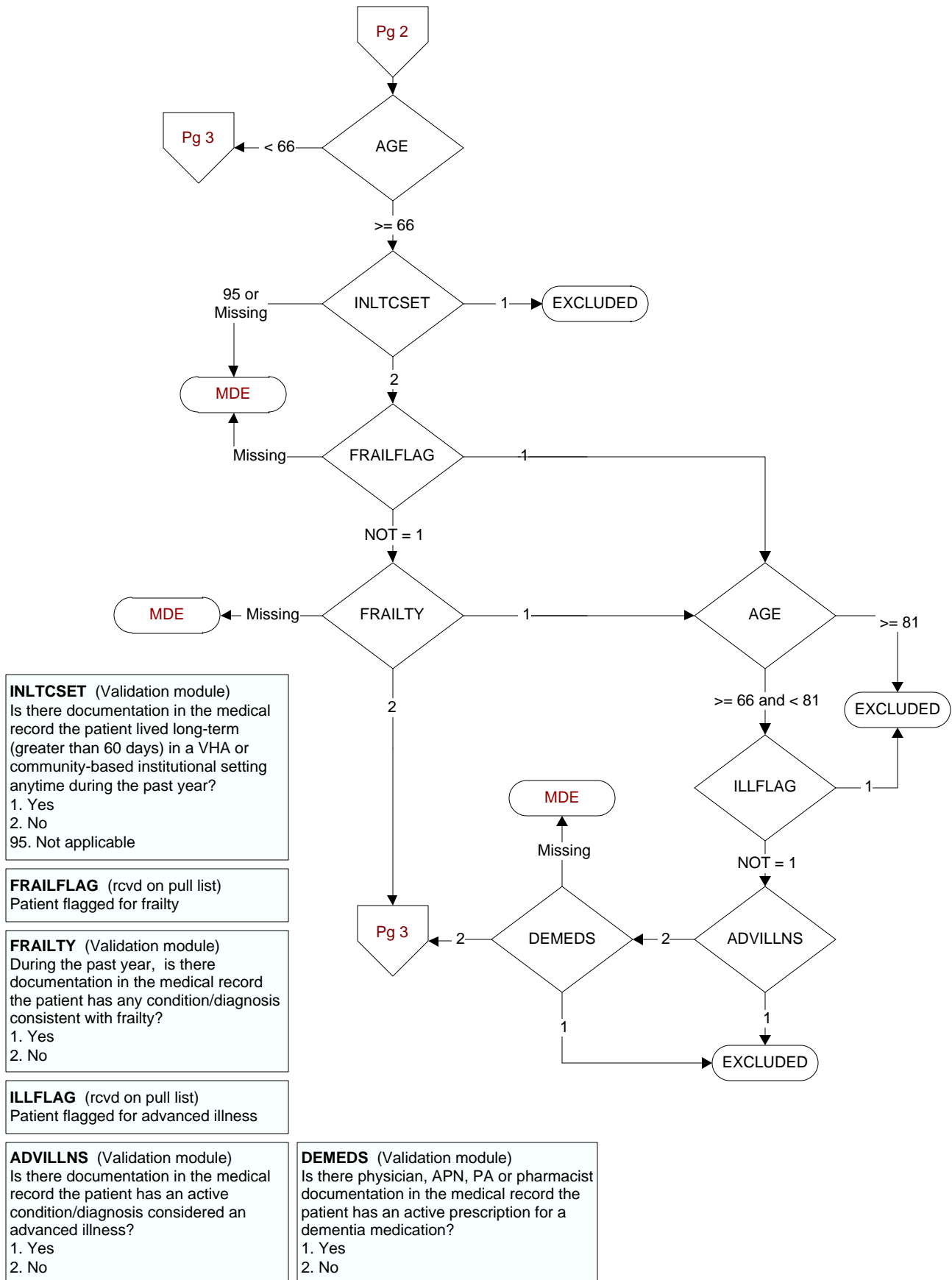
**SELM1** 4 = Old Myocardial Infarction  
-1 Yes  
0 No

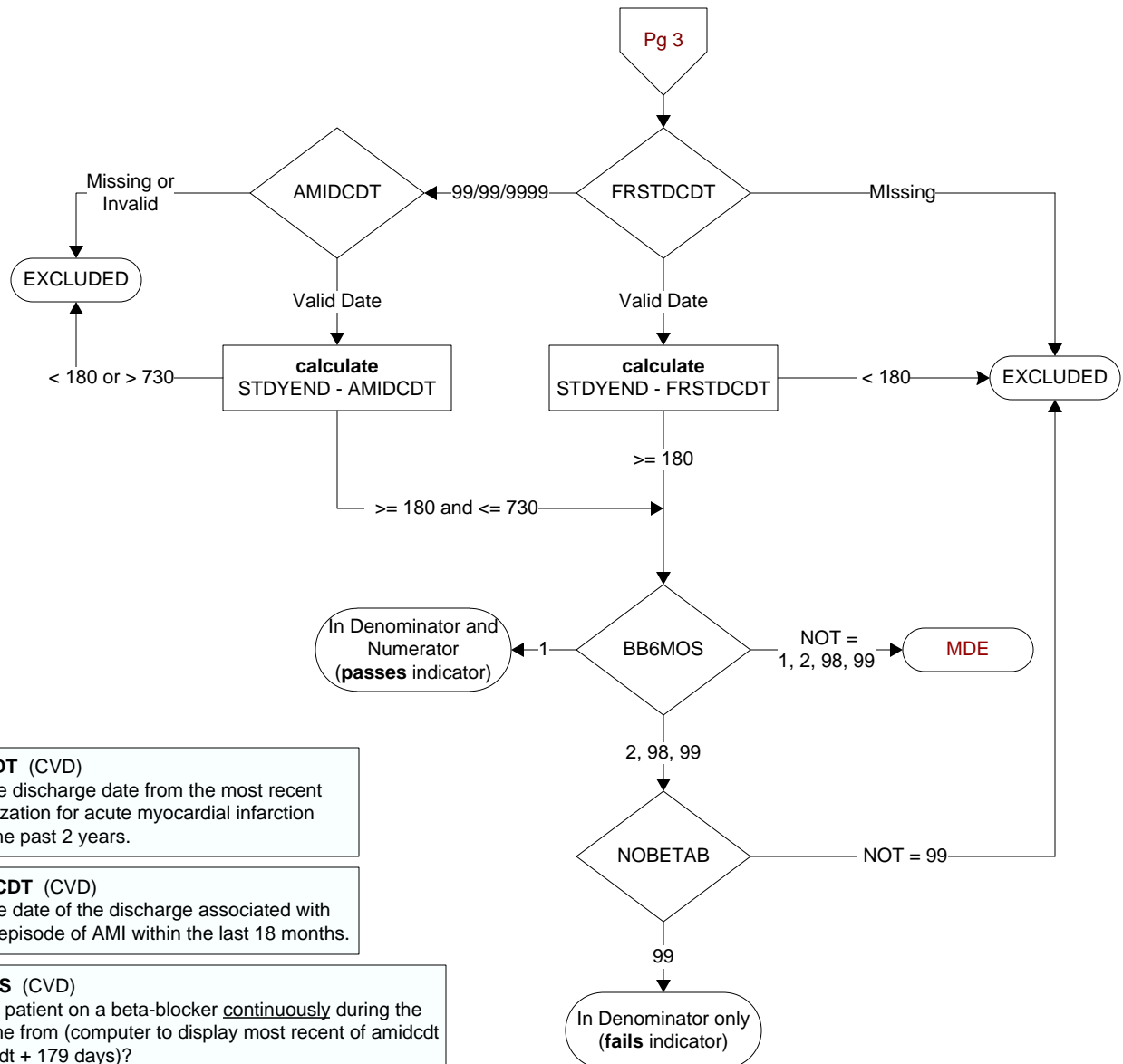
**MDE** = Missing or  
Invalid Data Exclusion  
(data error)

**AGE**

Calculated field  
(NEXUSDT - BIRTHDT).







**AMIDCDT (CVD)**  
Enter the discharge date from the most recent hospitalization for acute myocardial infarction during the past 2 years.

**FRSTDCDT (CVD)**  
Enter the date of the discharge associated with the first episode of AMI within the last 18 months.

**BB6MOS (CVD)**  
Was the patient on a beta-blocker continuously during the timeframe from (computer to display most recent of amidcdt or frstdcdt + 179 days)?  
1. Yes  
2. No  
95. Not applicable  
98. Patient refused beta blocker or was non-compliant  
Not documented/unable to determine

**NOBETAB (Shared)**  
Does the record document any of the following reasons for not prescribing a beta-blocker?  
1. Beta-blocker allergy  
2. Bradycardia (heart rate less than 60 bpm) while not on a beta blocker  
3. Second or third degree heart block on ECG and does not have a pacemaker  
9. Post-heart transplant patient  
10. Documentation of severely decompensated heart failure  
95. Not applicable  
97. Other reasons documented by a physician/APN/ PA or pharmacist for not prescribing a beta- blocker  
98. Patient refusal of beta-blockers documented by physician/APN/PA or pharmacist  
99. No documented reason