

Document Links:[HBPC Instrument](#)**CATNUM**

Sample cohort
HBPC – Home Based Primary Care

REVSTAT

REVIEW STATUS (not abstracted)

0. Abstraction has not begun
1. Abstraction in progress
2. Abstraction completed w/o errors
3. TVG failure (exclusion)
4. Record contains missing required answers
5. Administrative Exclusion

HCSTATUS (HBPC)

Counting from the most recent HBPC encounter within the study interval, enter the patient's status in regard to HBPC admission:

2. HBPC admission greater than or equal to 30 days but less than or equal to 1 year
3. HBPC admission greater than one year (>365 days from the admission date)

STDYBEG

Study Begin date - not abstracted - received on pull list

ADMISDT (HBPC)

Enter the HBPC admission date. **Admission date is date of the progress note documenting admission.**

INPTADM (HBPC)

During the time frame from (computer display admisdt to admisdt + 30 days), did the record document the patient was hospitalized?

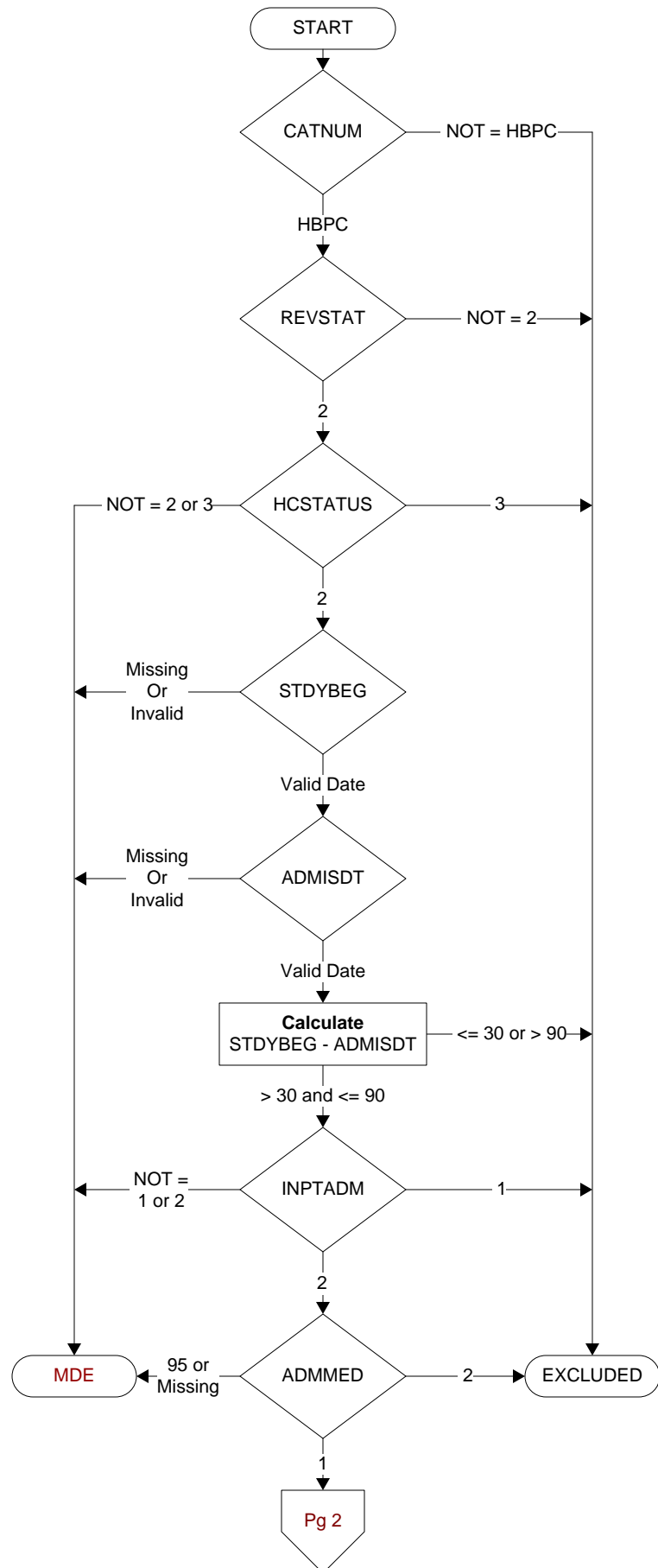
1. Yes
2. No

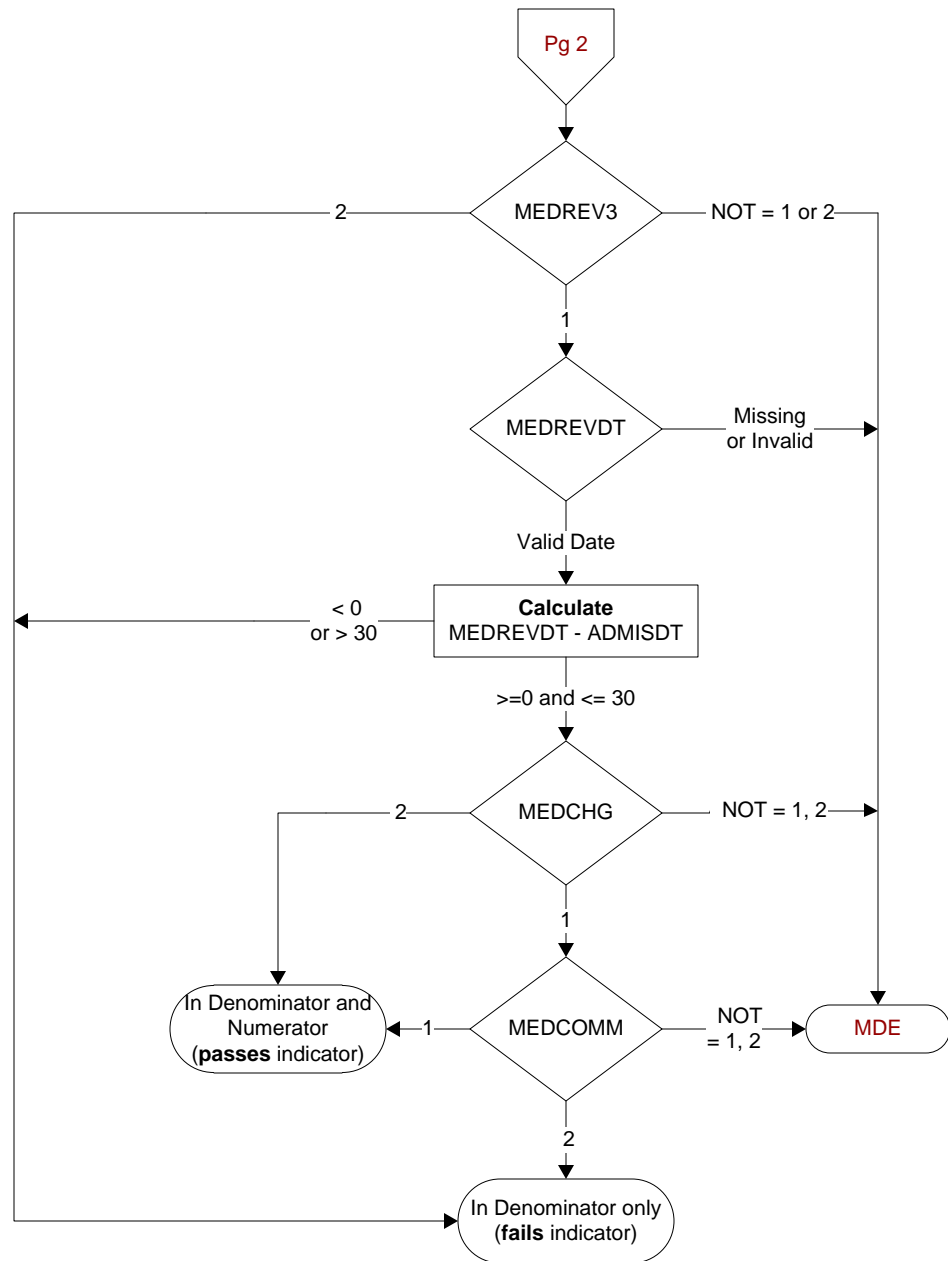
ADMMED (HBPC)

At the time of HBPC admission, was the patient on at least one medication?

1. Yes
2. No

MDE = Missing or Invalid Data Exclusion (data error)



**MEDREV3** (HBPC)

During the time frame from (computer to display admisdt to admisdt + 30 days), did the record document the patient's HBPC medication management plan in a note signed by the pharmacist?

1. Yes
2. No

MEDREVDT (HBPC)

Enter the date of the most recent medication management plan review.

MEDCHG (HBPC)

Did the pharmacist make any recommendation for change in the patient's medication regimen?

1. Yes
2. No

MEDCOMM (HBPC)

Did the pharmacist communicate any change in the patient's medication regimen to the HBPC or primary care provider?

1. Yes
2. No