

Document Links:[CGPI PI Module](#)[CGPI MH Module](#)**CATNUM**

Sample category
 16. AMI - Outpatient visit
 36. SCI Dx
 48. Female, age 20-69
 50. Random Sample
 51. Random Sample MH
 54. Frail/Elderly
 60. DM Outpatient
 61. Inpatient SC
 68. Contract CBOC

REVSTAT

REVIEW STATUS (not abstracted)
 0. Abstraction has not begun
 1. Abstraction in progress
 2. Abstraction completed w/o errors
 3. TVG failure (exclusion)
 4. Record contains missing required answers
 5. Administrative exclusion from all measures

FEFLAG (rcvd on pull list)
 FE case flagged for CGPI review / scoring?
 0. No
 1. Yes

DOCHOSPCE (PI module)

Is one of the following documented in the medical record?
 -- The patient is enrolled in a VHA or community-based Hospice program
 -- The patient has a diagnosis of cancer of the liver, pancreas, or esophagus
 -- On the problem list it is documented the patient's life expectancy is less than 6 months?
 1. Yes
 2. No

DEMENTDX2 (MH)

During the past year, does the record document a diagnosis of dementia/neurocognitive disorder as evidenced by one of the following ICD-10-CM diagnosis codes:

A8100, A8101, A8109, A812, A8182, A8189, A819, F0150, F0151, F0280, F0281, F0390, F0391, F1027, F1097, F1327, F1397, F1817, F1827, F1897, F1917, F1927, F1997, G231, G300, G301, G308, G309, G3101, G3109, G3183, G903

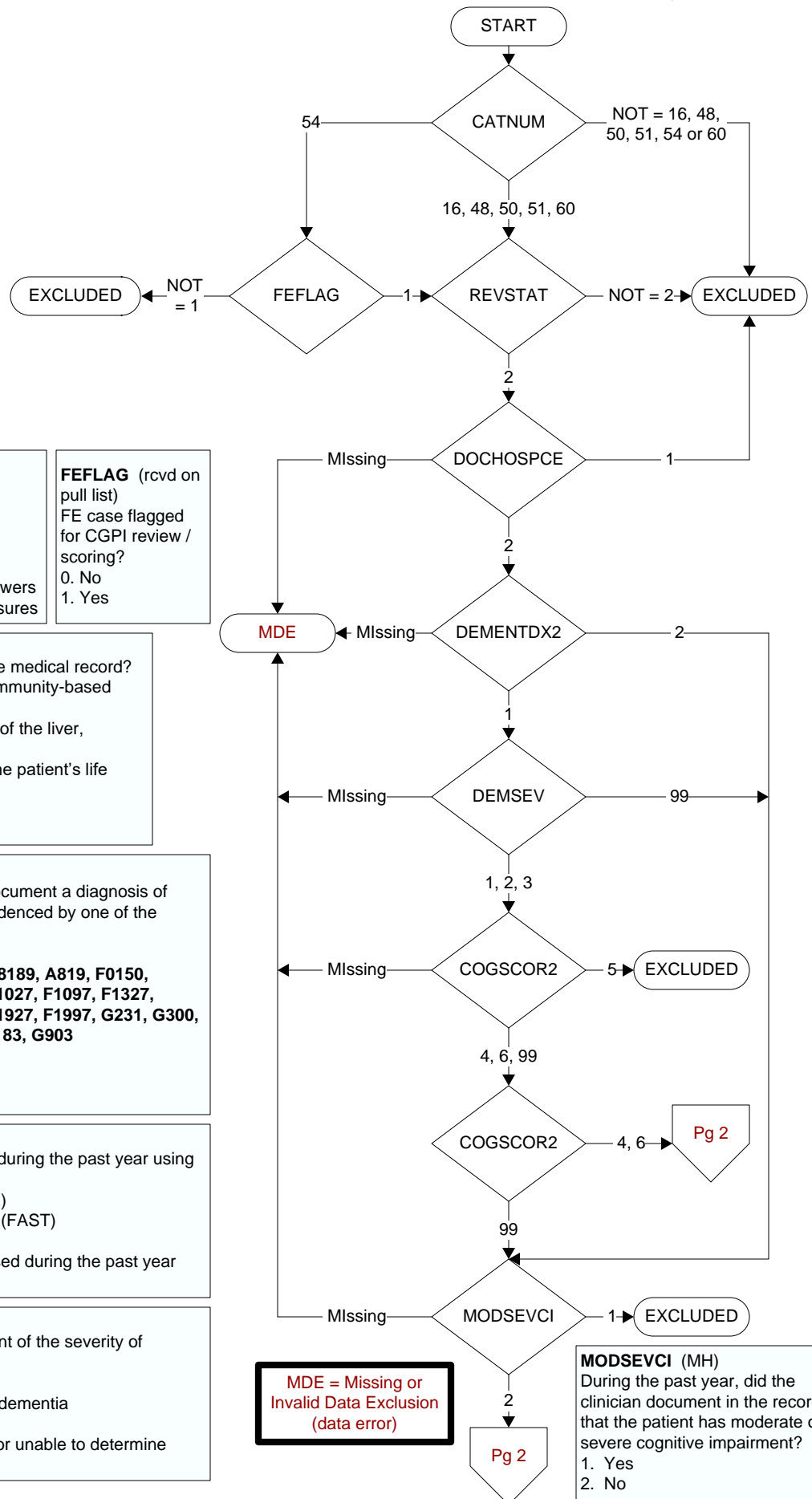
1. Yes
 2. No

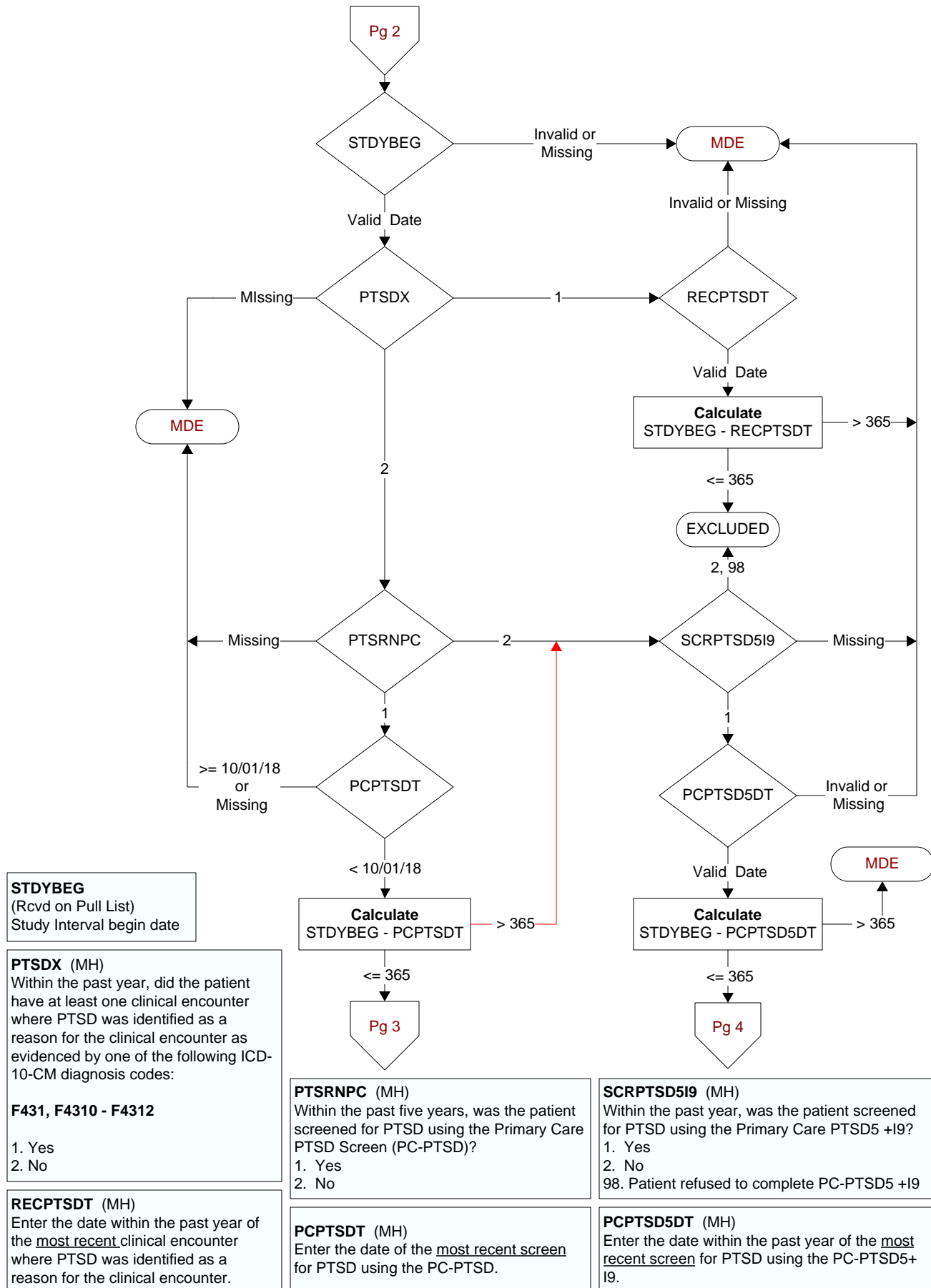
DEMSEV (MH)

Was the severity of dementia assessed during the past year using one of the following standardized tools?
 1. Clinical Dementia Rating Scale (CDR)
 2. Functional Assessment Staging Tool (FAST)
 3. Global Deterioration Scale (GDS)
 99. Severity of dementia was not assessed during the past year using one of the specified tools

COGSCOR2 (MH)

What was the outcome of the assessment of the severity of dementia assessment?
 4. Score indicated mild dementia
 5. Score indicated moderate to severe dementia
 6. Score indicated no dementia
 99. No score documented in the record or unable to determine outcome





PTSDSCOR (MH)

Enter the total score for the screen documented in the record. (Abstractor can enter default z if no total score is documented)

PCPTSD (MH)

Enter the patient's answers to each of the Primary Care PTSD Screen questions: Have you ever had any experience that was so frightening, horrible, or upsetting that, **IN THE PAST MONTH**, you:

PCPTSD1. Have had any nightmares about it or thought about it when you did not want to?

PCPTSD2. Tried hard not to think about it or went out of your way to avoid situations that remind you of it?

PCPTSD3. Were constantly on guard, watchful, or easily startled?

PCPTSD4. Felt numb or detached from others, activities, or your surroundings?

1. Yes

2. No

99. No answer documented

SCORINTRP (MH)

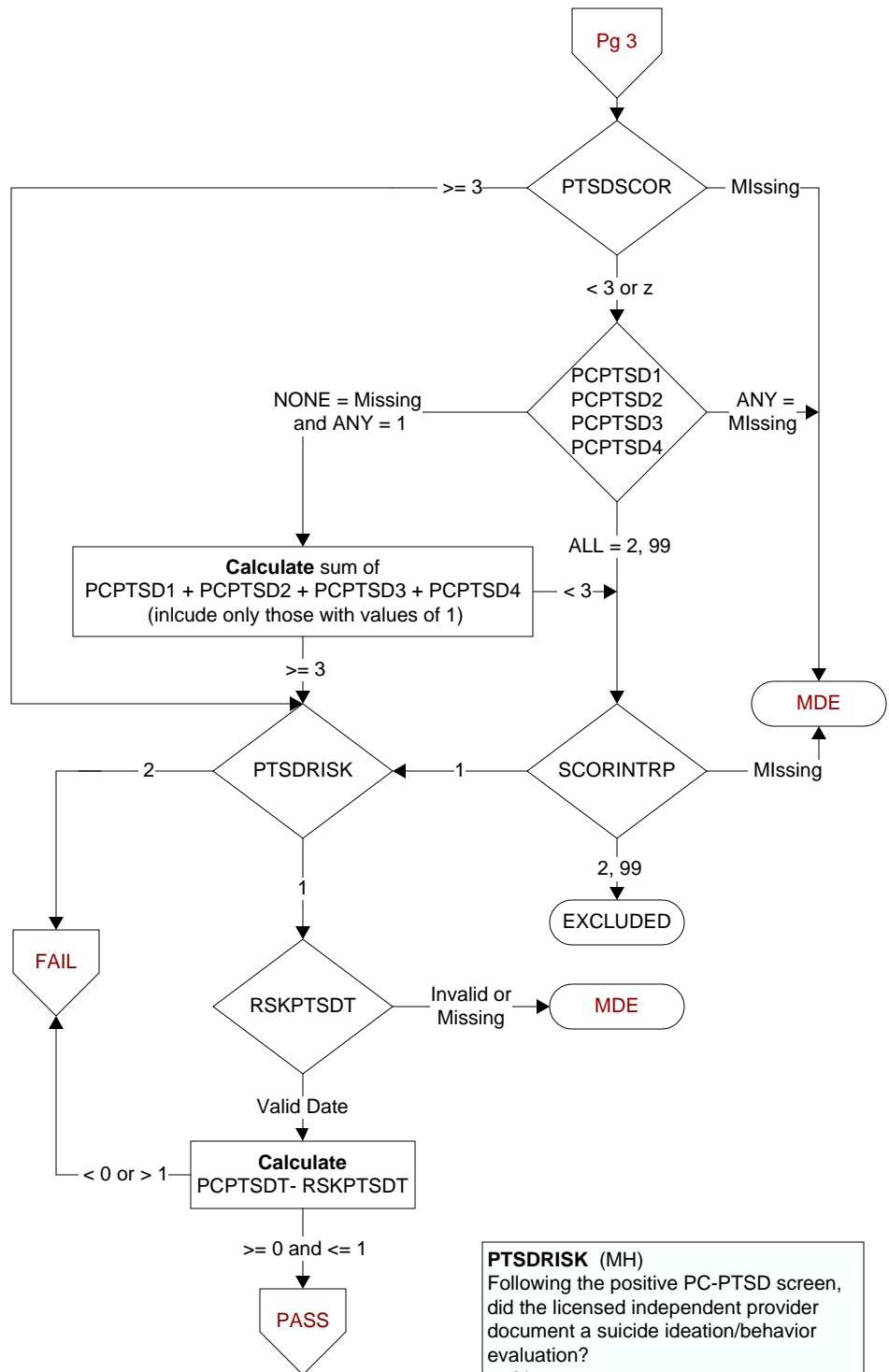
Enter the interpretation of the score, as documented in the medical record.

1. Positive

2. Negative

95. Not applicable

99. No interpretation documented

**PTSDRISK (MH)**

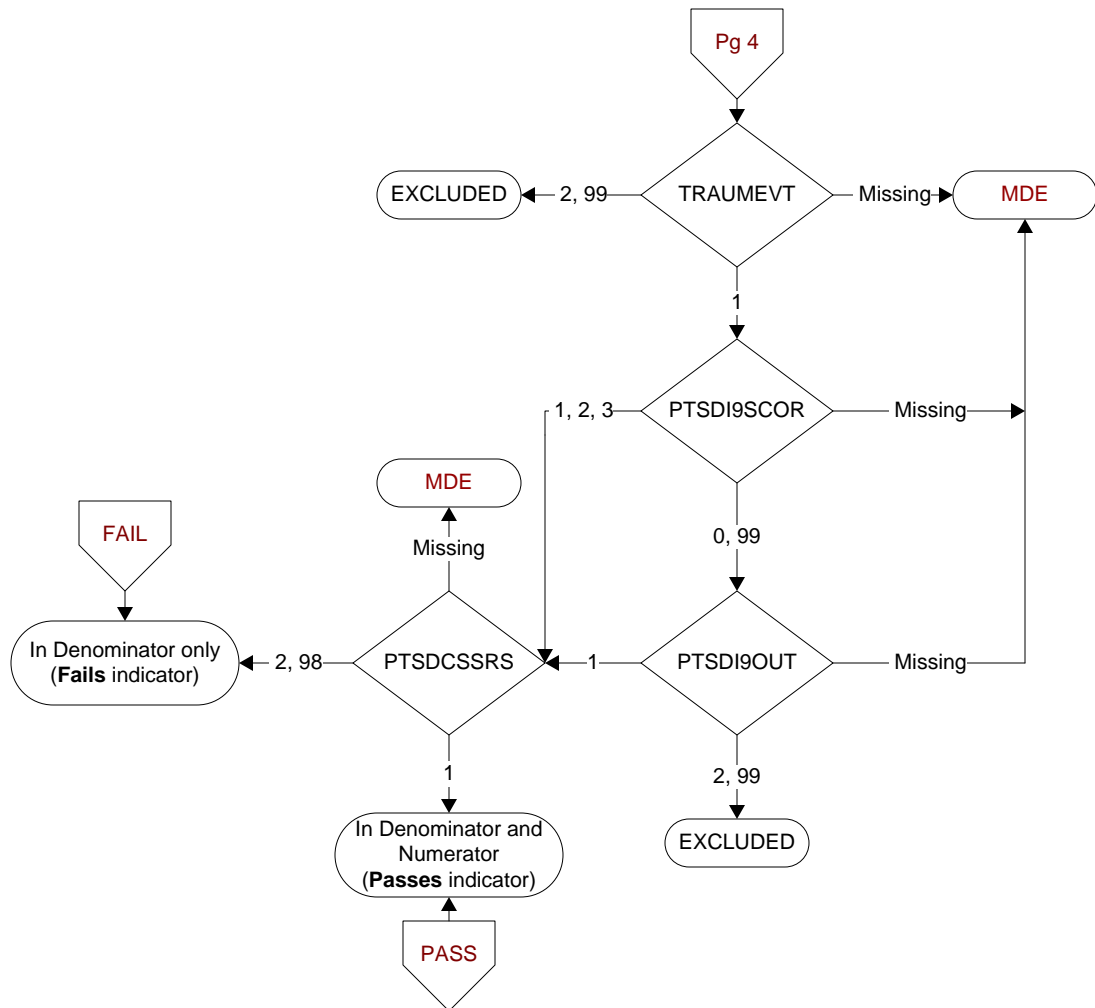
Following the positive PC-PTSD screen, did the licensed independent provider document a suicide ideation/behavior evaluation?

1. Yes

2. No

RSKPTSDT (MH)

Enter the date of the suicide ideation/behavior evaluation.

**TRAUMEVT (MH)**

Enter the response documented in the record for PC-PTSD5 +I9 exposure to traumatic event(s).

Sometimes things happen to people that are unusually or especially frightening, horrible, or traumatic. For example:

- a serious accident or fire
- a physical or sexual assault or abuse
- an earthquake or flood
- a war
- seeing someone be killed or seriously injured
- having a loved one die through homicide or suicide.

Have you ever experienced this kind of event?

1. Yes
2. No
99. Response not documented

PTSDI9SCOR (MH)

Enter the score for item 9 question #6 of the PC-PTSD5 + I9 screen documented in the record:

Over the last 2 weeks, how often have you been bothered by thoughts that you would be better off dead, or of hurting yourself in some way?

0. Not at all → 0
1. Several days → 1
2. More than half the days → 2
3. Nearly every day → 3
99. No answer documented

PTSDI9OUT (MH)

Enter the interpretation of item 9 question #6 of the PC-PTSD5- +I9 screen as documented in the medical record.

1. Positive
2. Negative
99. No interpretation documented

PTSDCSSLRS (MH)

On (computer to display pcptsd5dt), the day of the positive I 9, did the acceptable provider complete the Columbia-Suicide Severity Rating Scale (C-SSRS) Screener?

1. Yes
2. No

98. Patient refused to complete the C-SSRS screener