

Document Links:[HBPC Instrument](#)**CATNUM**

Sample cohort
HBPC – Home Based Primary Care

REVSTAT

REVIEW STATUS (not abstracted)

- 0. Abstraction has not begun
- 1. Abstraction in progress
- 2. Abstraction completed w/o errors
- 3. TVG failure (exclusion)
- 4. Record contains missing required answers
- 5. Administrative Exclusion

HCSTATUS (HBPC)

Counting from the most recent HBPC encounter within the study interval, enter the patient's status in regard to HBPC admission:

- 2. HBPC admission greater than or equal to 30 days but less than or equal to 1 year
- 3. HBPC admission greater than one year (>365 days from the admission date)

INPTADM (HBPC)

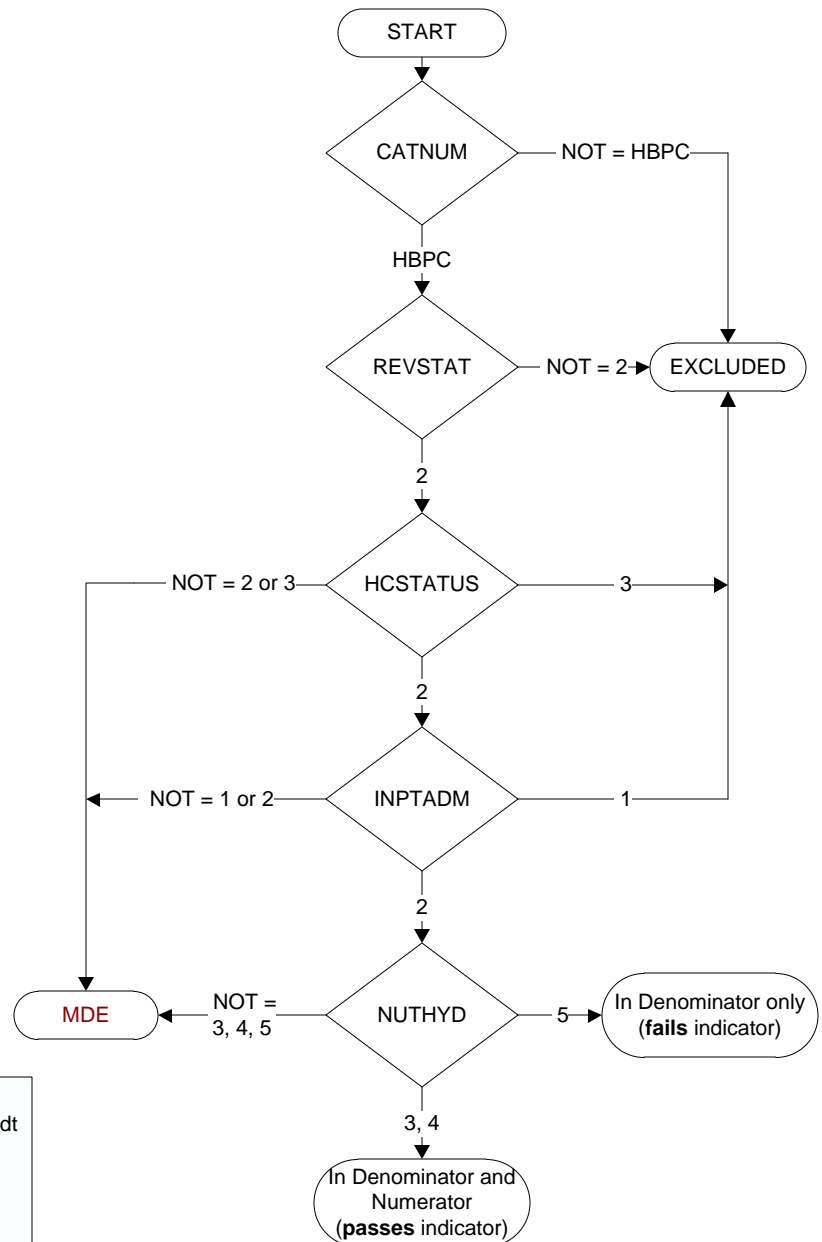
During the time frame from (computer display admisdt to admisdt + 30 days), did the record document the patient was hospitalized?

- 1. Yes
- 2. No

NUTHYD (HBPC)

During the time frame from (computer to display admisdt – 30 days to admisdt + 30 days), does the record document assessment of the patient's nutritional and hydration needs by a registered or clinical dietitian during a face-to-face or clinical video teleconference (CVT) encounter?

- 3. Yes, assessment of patient's nutritional and hydration needs by a registered or clinical dietitian was documented during a **face-to-face encounter**.
- 4. Yes, assessment of patient's nutritional and hydration needs by a registered or clinical dietitian was documented during a **CVT encounter**.
- 5. No assessment of the patient's nutritional and hydration needs was documented by a registered or clinical dietitian during a face-to-face or clinical video teleconference (CVT) encounter.



**MDE = Missing or
Invalid Data Exclusion
(data error)**