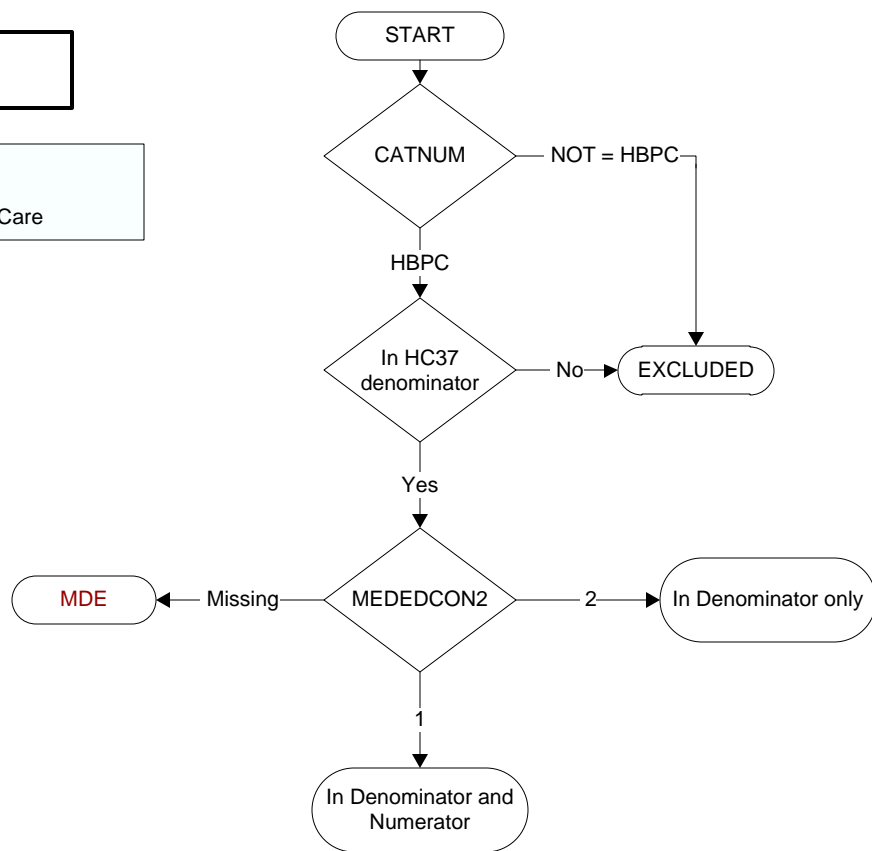


Document Links:[HBPC Instrument](#)**CATNUM**

Sample cohort

HBPC – Home Based Primary Care



**MDE = Missing or
Invalid Data Exclusion
(data error)**

MEDEDCON1-4 (HBPC)

During the time frame (if orderdt ≤ 10 days prior or = medrecdt, computer to display medrecdt – 10 days to medrecdt + 10 days; if orderdt > 10 days prior to medrecdt, computer to display orderdt – 10 days to orderdt + 10 days), did a physician/APN/PA, pharmacist, RN, LPN, or *Registered Dietitian (RD) provide education on the new medication(s) prescribed/added to the patient/caregiver to include

MEDEDCON1. Medication name, type and reason for use

1. Yes
2. No

MEDEDCON2. How to administer the medication (include process, time, frequency, route, and dose)

1. Yes
2. No

MEDEDCON3. Anticipated actions and potential side effects

1. Yes
2. No

MEDEDCON4. How to monitor effects of the medication

1. Yes
2. No