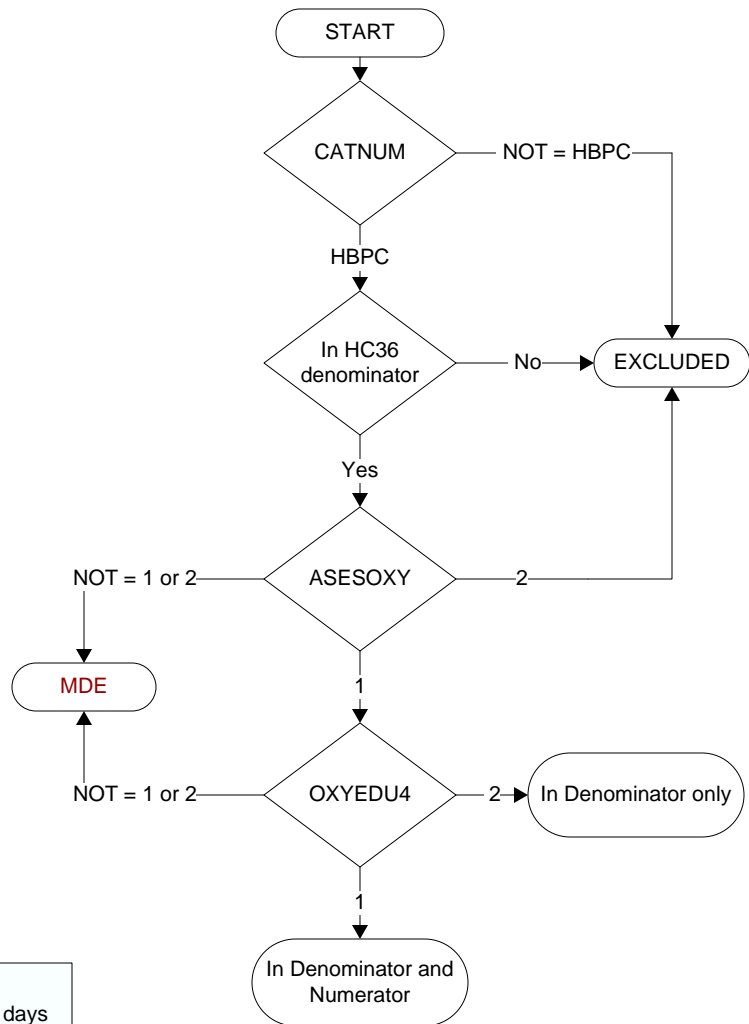


**Document Links:**[HBPC Instrument](#)

**MDE = Missing or  
Invalid Data Exclusion  
(data error)**

**CATNUM**

Sample cohort  
HBPC – Home Based Primary Care

**ASESOXY (HBPC)**

During the time frame from (computer to display admisdt – 30 days to admisdt + 30 days) at a face-to-face encounter, was a home oxygen safety risk assessment documented by a HBPC team member to include all of the following components?

-- Whether there are smoking materials in the home,  
-- Whether or not the home has functioning smoke detectors, and  
-- Whether there are other fire safety risks in the home, such as the potential for open flames

1. Yes
2. No

During the HBPC team face-to-face encounter on (computer to display asesoxydt), did the HBPC team member inform and educate the patient/caregiver on home oxygen safety to include:

**OXYEDU1.** The findings of the oxygen safety risk assessment

1. Yes
2. No

**OXYEDU2.** The causes of fire

1. Yes
2. No

**OXYEDU3.** Fire risks for neighboring residences and buildings

1. Yes
2. No

**OXYEDU4.** Precautions that can prevent fire-related injuries

1. Yes
2. No