

Document Links:[CGPI Validation Module](#)[CGPI PI Module](#)[CGPI Core Module](#)[CGPI CVD Module](#)**CATNUM**

Sample category
 16. AMI - Outpatient visit
 36. SCI Dx
 48. Female, age 20-69
 50. Random Sample
 51. Random Sample MH
 54. Frail/Elderly
 60. DM Outpatient
 61. Inpatient SC
 68. Contract CBOC

FEFLAG (rcvd on pull list)

FE case flagged for CGPI review / scoring?
 0. No
 1. Yes

OTHCARE (Validation)

Is there evidence in the medical record that within the past two years, the patient refused VHA Primary Care and is receiving ONLY his/her primary care in a non-VHA setting?
 1. yes
 2. no

REVSTAT

REVIEW STATUS (not abstracted)
 0. Abstraction has not begun
 1. Abstraction in progress
 2. Abstraction completed w/o errors
 3. TVG failure (exclusion)
 4. Record contains missing required answers (error record)
 5. Administrative exclusion from all measures

DOCHOSPCE (PI module)

Is one of the following documented in the medical record?
 -- The patient is enrolled in a VHA or community-based Hospice program
 -- The patient has a diagnosis of cancer of the liver, pancreas, or esophagus
 -- On the problem list it is documented the patient's life expectancy is less than 6 months?
 1. Yes
 2. No

STDYEND

Last day of study period (rcvd on pull list).

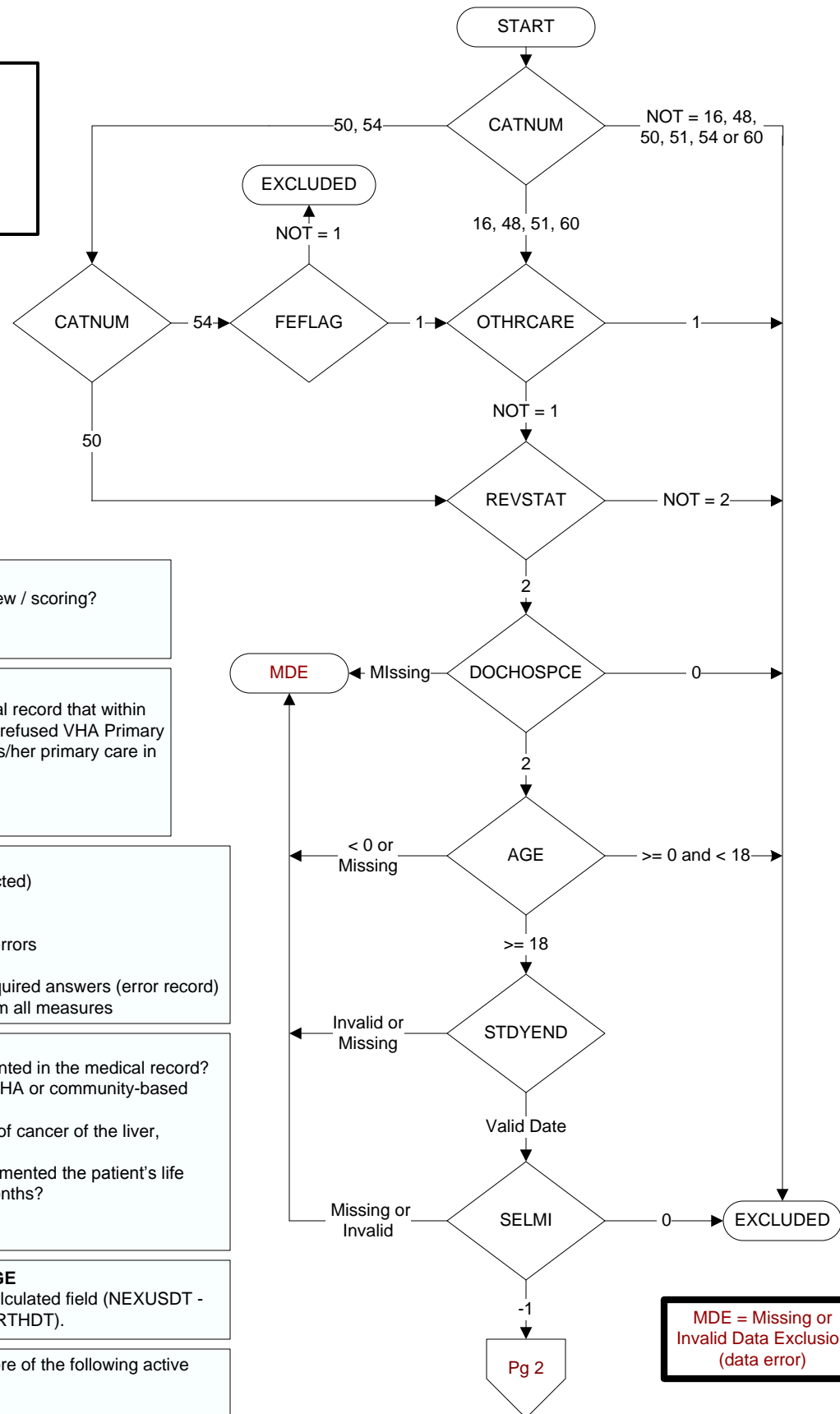
AGE

Calculated field (NEXUSDT - BIRTHDT).

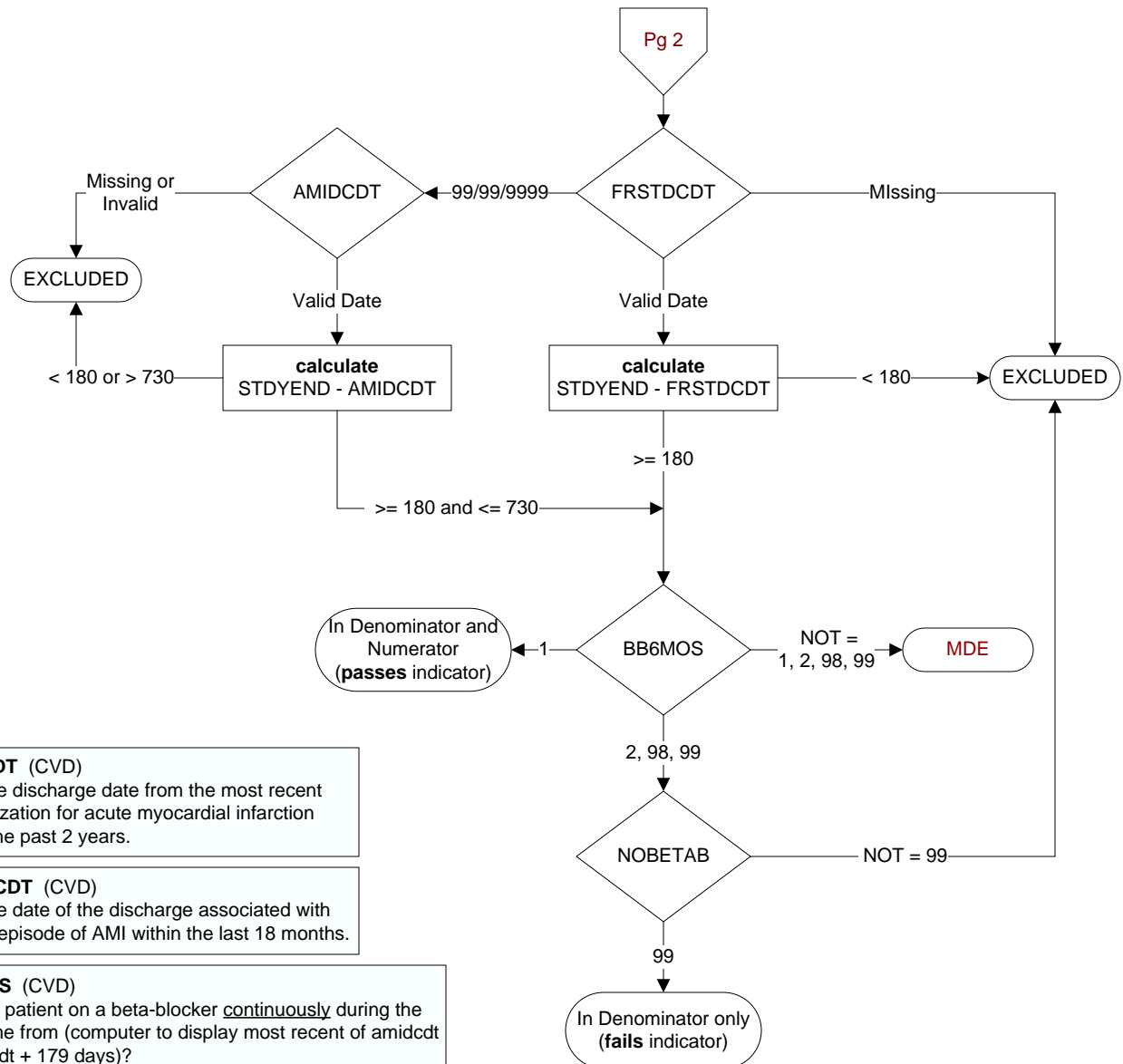
Did the patient have one or more of the following active diagnoses? (Validation)

SELM1 4 = Old Myocardial Infarction

-1 Yes
 0 No



MDE = Missing or Invalid Data Exclusion (data error)



AMIDCDT (CVD)
Enter the discharge date from the most recent hospitalization for acute myocardial infarction during the past 2 years.

FRSTDCDT (CVD)
Enter the date of the discharge associated with the first episode of AMI within the last 18 months.

BB6MOS (CVD)
Was the patient on a beta-blocker continuously during the timeframe from (computer to display most recent of amidcdt or frstdcdt + 179 days)?
1. Yes
2. No
95. Not applicable
98. Patient refused beta blocker or was non-compliant
Not documented/unable to determine

NOBETAB (Shared)
Does the record document any of the following reasons for not prescribing a beta-blocker?
1. Beta-blocker allergy
2. Bradycardia (heart rate less than 60 bpm) while not on a beta blocker
3. Second or third degree heart block on ECG and does not have a pacemaker
9. Post-heart transplant patient
10. Documentation of severely decompensated heart failure
95. Not applicable
97. Other reasons documented by a physician/APN/ PA or pharmacist for not prescribing a beta- blocker
98. Patient refusal of beta-blockers documented by physician/APN/PA or pharmacist
99. No documented reason