

Document Links:[CGPI Validation Module](#)[CGPI PI Module](#)[CGPI Shared Module](#)**CATNUM**

Sample category
 16. AMI - Outpatient visit
 36. SCI Dx
 48. Female, age 20-69
 50. Random Sample
 51. Random Sample MH
 54. Frail/Elderly
 60. DM Outpatient
 61. Inpatient SC
 68. Contract CBOC

FEFLAG (rcvd on pull list)

FE case flagged for CGPI review / scoring?
 0. No
 1. Yes

OTHCARE (Validation)

Is there evidence in the medical record that within the past two years, the patient refused VHA Primary Care and is receiving ONLY his/her primary care in a non-VHA setting?
 1. yes
 2. no

REVSTAT

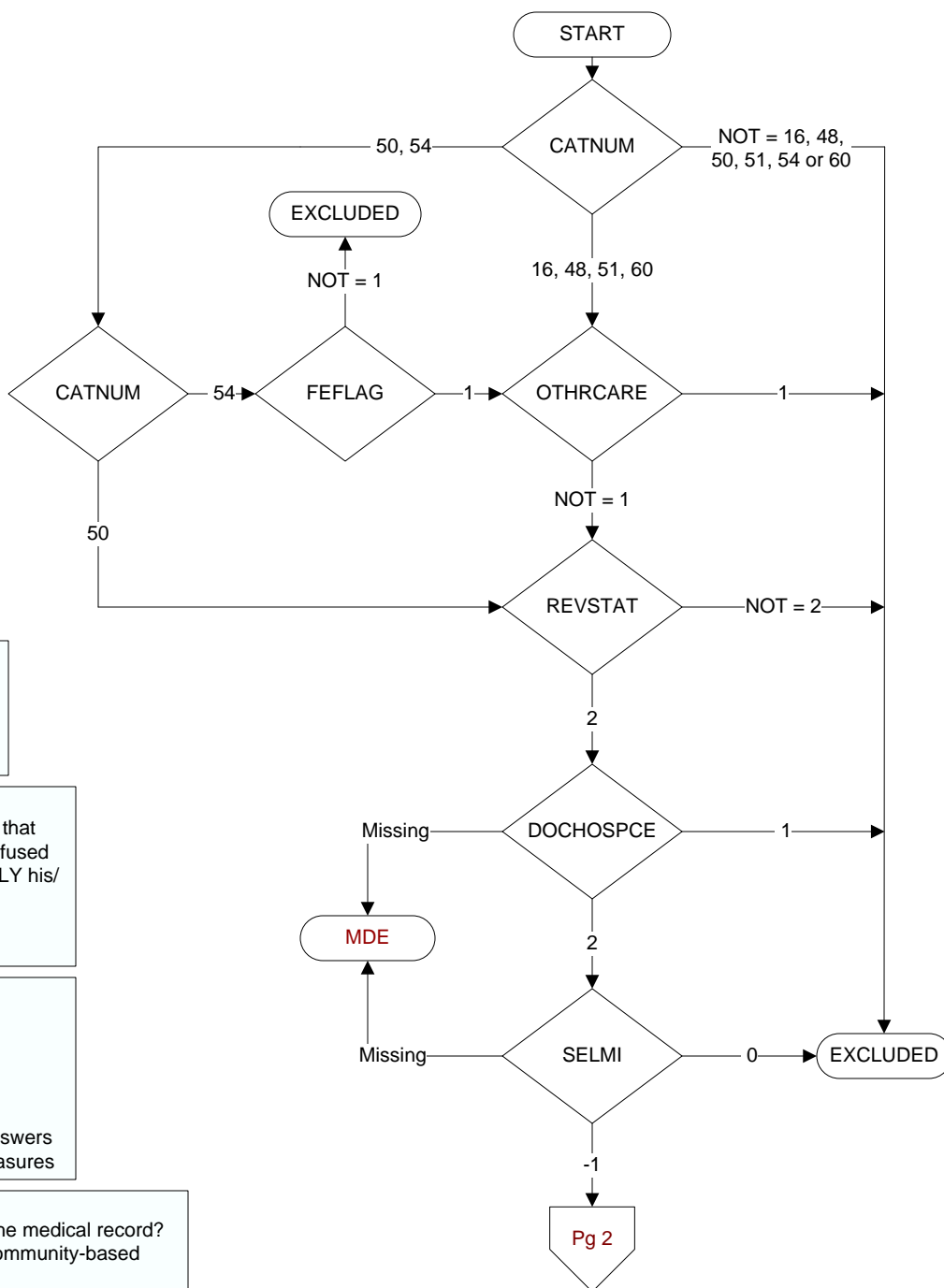
REVIEW STATUS (not abstracted)
 0. Abstraction has not begun
 1. Abstraction in progress
 2. Abstraction completed w/o errors
 3. TVG failure (exclusion)
 4. Record contains missing required answers
 5. Administrative exclusion from all measures

DOCHOSPCE (PI module)

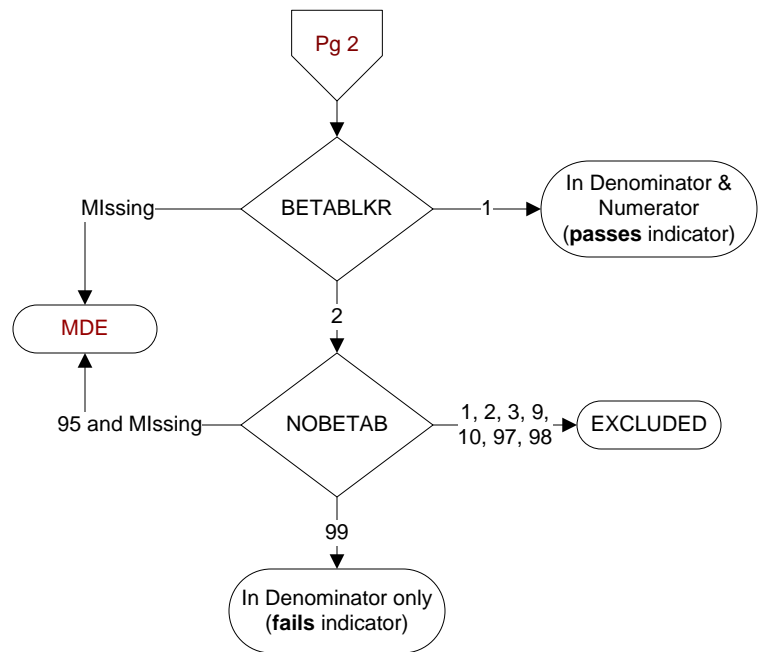
Is one of the following documented in the medical record?
 -- The patient is enrolled in a VHA or community-based Hospice program
 -- The patient has a diagnosis of cancer of the liver, pancreas, or esophagus
 -- On the problem list it is documented the patient's life expectancy is less than 6 months?
 1. Yes
 2. No

Did the patient have one or more of the following active diagnoses? (Validation)

SELM = Old Myocardial Infarction
 -1 = Yes
 0 = No



MDE = Missing or Invalid Data Exclusion (data error)

**BETABLR** (Shared)

At the most recent outpatient visit, was a beta-blocker included in the patient's current medications?

Examples of beta-blockers include, but are not limited to:

- metoprolol succinate or tartrate
- carvedilol
- atenolol
- nadolol
- propranolol
- combination of beta-blockers with other drugs

1. Yes
2. No

NOBETAB (Shared)

Does the record document any of the following reasons for not prescribing a beta-blocker?

1. Beta-blocker allergy
2. Bradycardia (heart rate less than 60 bpm) while not on a beta blocker
3. Second or third degree heart block on ECG and does not have a pacemaker
9. Post-heart transplant patient
10. Documentation of severely decompensated heart failure
95. Not applicable
97. Other reasons documented by a physician/APN/ PA or pharmacist for not prescribing a beta- blocker
98. Patient refusal of beta-blockers documented by physician/APN/PA or pharmacist
99. No documented reason