

Document Links:[CGPI Validation Module](#)[CGPI OP Med Recon Module](#)**CATNUM**

Sample category
 16. AMI - Outpatient visit
 36. SCI Dx
 48. Female, age 20-69
 50. Random Sample
 51. Random Sample MH
 54. Frail/Elderly
 60. DM Outpatient
 61. Inpatient SC
 68. Contract CBOC

REVSTAT

REVIEW STATUS (not abstracted)

0. Abstraction has not begun
 1. Abstraction in progress
 2. Abstraction completed w/o errors
 3. TVG failure (exclusion)
 4. Record contains missing required answers
 5. Administrative exclusion from all measures

OTHCARE (CGPI Validation)

Is there evidence in the medical record that within the past two years, the patient refused VHA Primary Care and is receiving ONLY his/her primary care in a non-VHA setting?

1. yes
 2. no

NEXUSRX (OP MRec)

During the NEXUS clinic visit on (computer to display NEXUSDT), did the provider prescribe or modify medications?

1. Yes
 2. No

OPTMED1-6 (OP MedRec)

During the most recent NEXUS encounter on (computer to display NEXUSDT), is there evidence in the medical record that a medication list for review included all of the following components?

Medication List Component**OPTMED1.** Active VA Prescriptions

1. Yes
 2. No

OPTMED2. Remote Active VA Prescriptions

1. Yes
 2. No

OPTMED3. Non-VA Medications

1. Yes
 2. No

OPTMED4. Expired VA Prescriptions (see D/D rules)

1. Yes
 2. No

OPTMED5. Discontinued VA Prescriptions (see D/D rules)

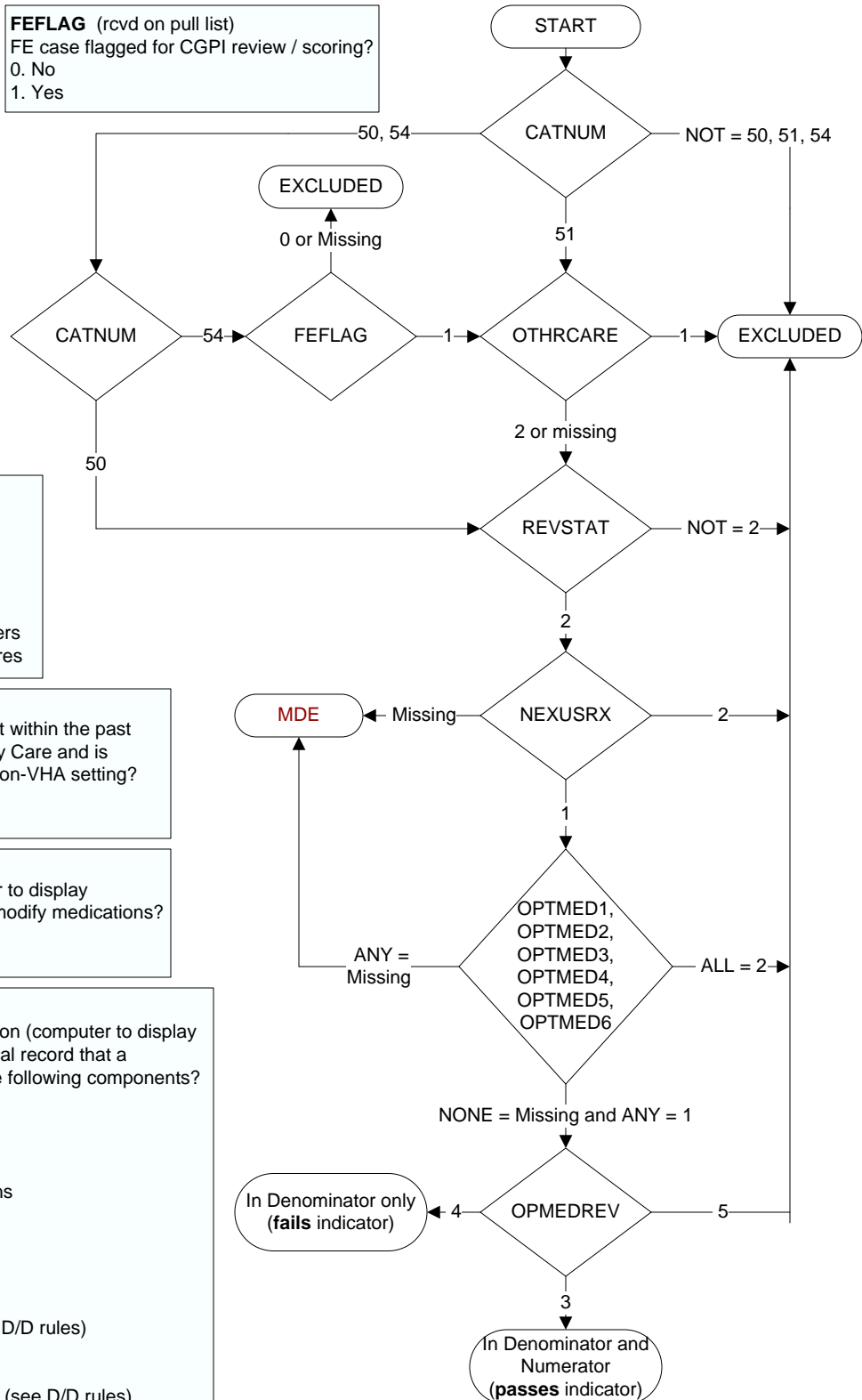
1. Yes
 2. No

OPTMED6. Pending Medication Orders

1. Yes
 2. No

**MDE = Missing or
 Invalid Data Exclusion
 (data error)**

FEFLAG (rcvd on pull list)
 FE case flagged for CGPI review / scoring?
 0. No
 1. Yes

**OPMEDREV** (OP MedRec)

During the most recent NEXUS encounter on (computer to display NEXUSDT), is there documentation the available essential medication list components were reviewed with the patient/caregiver?

3. Yes
 4. No: There is no documentation that the available essential medication list components were reviewed with the patient/caregiver
 5. Documented the patient/caregiver refused or was unable to participate in review of essential medication list components