

**Document Links:**[CGPI Validation Module](#)[CGPI OP Med Recon Module](#)**CATNUM**

Sample category  
 16. AMI - Outpatient visit  
 36. SCI Dx  
 48. Female, age 20-69  
 50. Random Sample  
 51. Random Sample MH  
 54. Frail/Elderly  
 60. DM Outpatient  
 61. Inpatient SC  
 68. Contract CBOC

**REVSTAT**

REVIEW STATUS (not abstracted)

0. Abstraction has not begun  
 1. Abstraction in progress  
 2. Abstraction completed w/o errors  
 3. TVG failure (exclusion)  
 4. Record contains missing required answers  
 5. Administrative exclusion from all measures

**OTHCARE** (CGPI Validation)

Is there evidence in the medical record that within the past two years, the patient refused VHA Primary Care and is receiving ONLY his/her primary care in a non-VHA setting?

1. yes  
 2. no

**NEXUSRX** (OP MRec)

During the NEXUS clinic visit on (computer to display NEXUSDT), did the provider prescribe or modify medications?

1. Yes  
 2. No

**OPTMED1-6** (OP MedRec)

During the most recent NEXUS encounter on (computer to display NEXUSDT), is there evidence in the medical record that a medication list for review included all of the following components?

**Medication List Component****OPTMED1.** Active VA Prescriptions

1. Yes  
 2. No

**OPTMED2.** Remote Active VA Prescriptions

1. Yes  
 2. No

**OPTMED3.** Non-VA Medications

1. Yes  
 2. No

**OPTMED4.** Expired VA Prescriptions (see D/D rules)

1. Yes  
 2. No

**OPTMED5.** Discontinued VA Prescriptions (see D/D rules)

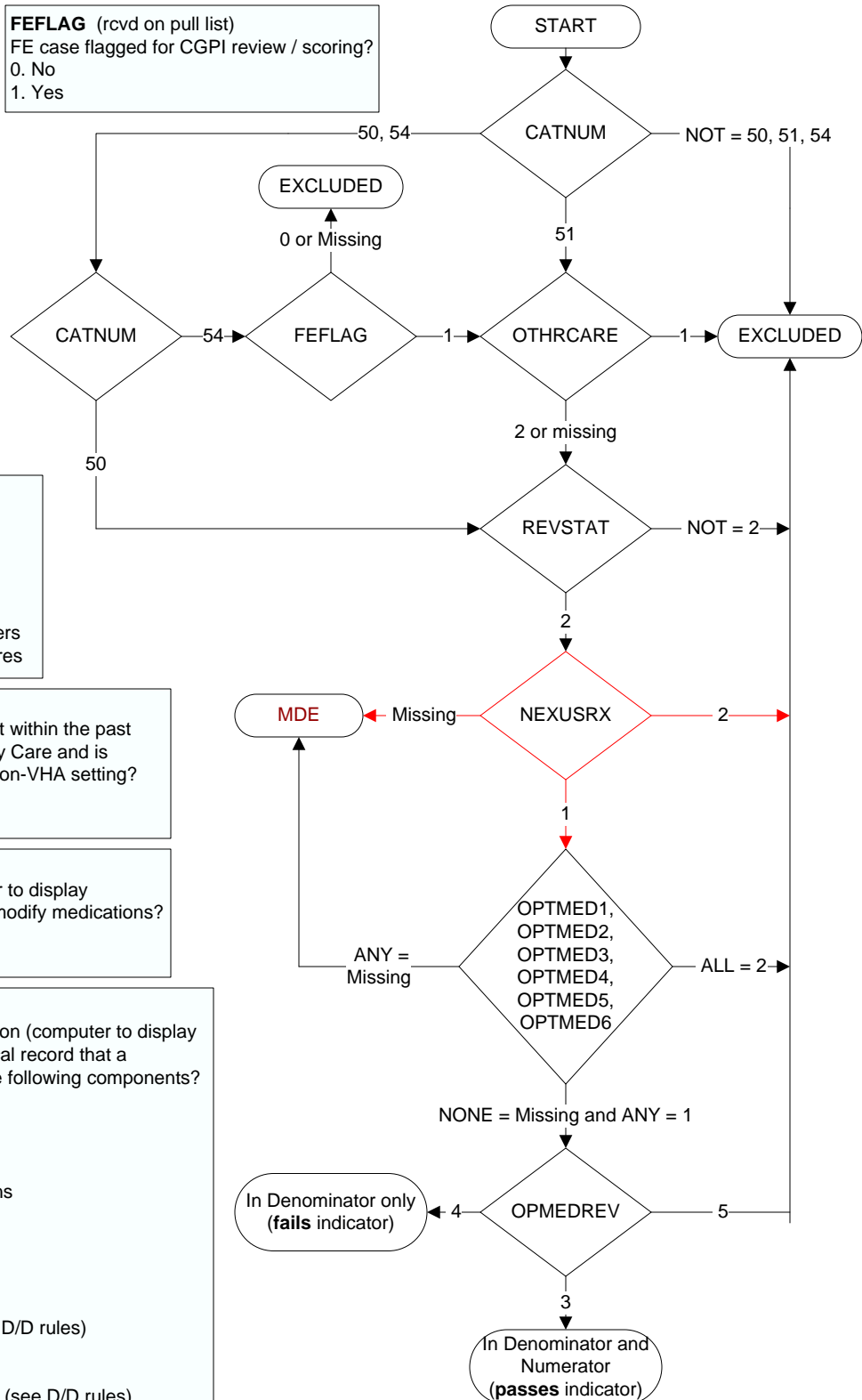
1. Yes  
 2. No

**OPTMED6.** Pending Medication Orders

1. Yes  
 2. No

**MDE = Missing or  
 Invalid Data Exclusion  
 (data error)**

**FEFLAG** (rcvd on pull list)  
 FE case flagged for CGPI review / scoring?  
 0. No  
 1. Yes

**OPMEDREV** (OP MedRec)

During the most recent NEXUS encounter on (computer to display NEXUSDT), is there documentation the available essential medication list components were reviewed with the patient/caregiver?

3. Yes  
 4. No: There is no documentation that the available essential medication list components were reviewed with the patient/caregiver  
 5. Documented the patient/caregiver refused or was unable to participate in review of essential medication list components