

Document Links:[Global Measures Instrument](#)[Inpt MedRecon Module](#)**REVSTAT**

REVIEW STATUS (not abstracted)

0. Abstraction has not begun
1. Abstraction in progress
2. Abstraction completed w/o errors
3. TVG failure (exclusion)
4. Record contains missing required answers
5. Administrative exclusion from all measures

CATNUM

Sample Cohort
(rcvd on pull list)
70. Global Measures

DCRXLIST (IP MedRec)

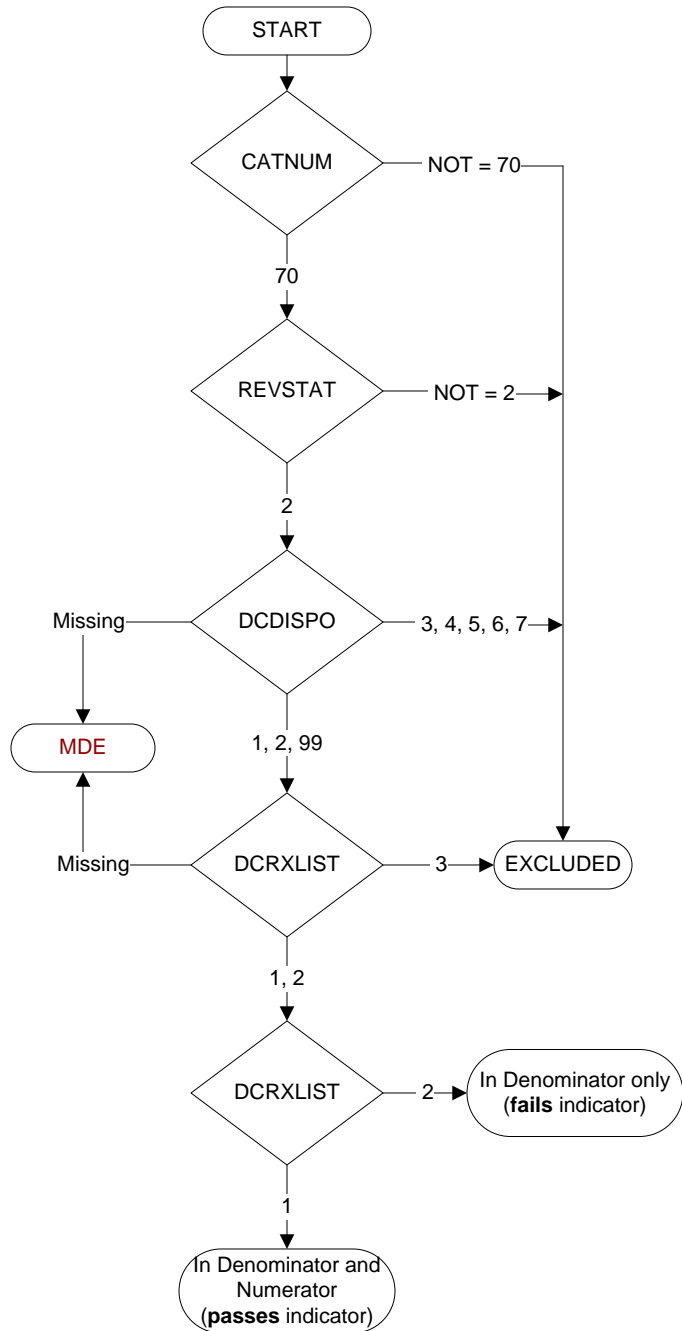
At the time of discharge, is there documentation that a written list of the reconciled discharge medications was provided to the patient/caregiver?

1. Yes
2. No
3. Documented medications were not prescribed at discharge

DCDISPO (GM)

What was the patient's discharge disposition on the day of discharge?

1. Home
 - Assisted Living Facilities (ALFs) - includes assisted living care at nursing home facility
 - Court/Law Enforcement – includes detention facilities, jails, and prison
 - Home - includes board and care, domiciliary, foster or residential care, group or personal care homes, retirement communities, and homeless shelters
 - Home with Home Health Services
 - Outpatient Services including outpatient procedures at another hospital, outpatient Chemical Dependency Programs and Partial Hospitalization
2. Hospice – Home (or other home settings as listed in #1 above)
3. Hospice – Health Care Facility
 - General Inpatient and Respite, Residential and Skilled Facilities, and Other Health Care Facilities
4. Acute Care Facility
 - Acute Short Term General and Critical Access Hospitals
 - Cancer and Children's Hospitals
 - Department of Defense and Veteran's Administration Hospitals
5. Other Health Care Facility
 - Extended or Immediate Care Facility (ECF/ICF)
 - Long Term Acute Care Hospital (LTACH)
 - Nursing Home or Facility including Veteran's Administration Nursing Facility
 - Psychiatric Hospital or Psychiatric Unit of a Hospital
 - Rehabilitation Facility including Inpatient Rehabilitation Facility/ Hospital or Rehabilitation Unit of a Hospital
 - Skilled Nursing Facility (SNF), Sub-Acute Care or Swing Bed
 - Transitional Care Unit (TCU)
 - Veteran's Home
6. Expired
7. Left Against Medical Advice/AMA
99. Not documented or unable to determine



**MDE = Missing or
Invalid Data Exclusion
(data error)**