

**Document Links:**[HBIPS Instrument](#)

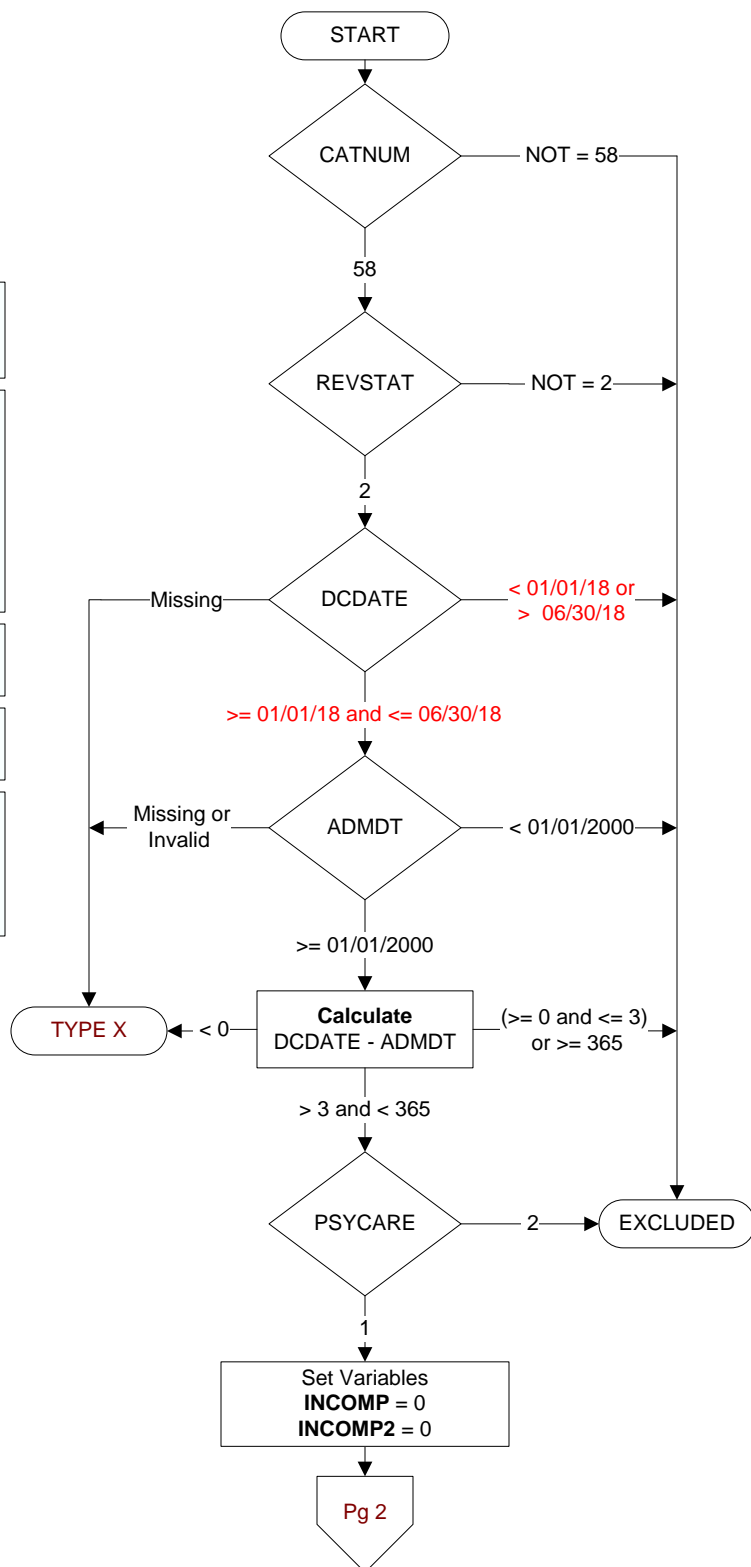
**CATNUM** (rcvd on pull list)  
 Sample category number  
 58 – Hospital Based Inpatient Psychiatric Services

**REVSTAT**  
 REVIEW STATUS (not abstracted)  
 0. Abstraction has not begun  
 1. Abstraction in progress  
 2. Abstraction completed w/o errors  
 3. TVG failure (exclusion)  
 4. Record contains missing required answers (error record)  
 5. Administrative exclusion from all measures

**DCDATE**  
 Discharge date from hospital:

**ADMDT**  
 Date of admission to inpatient care:

**PSYCARE**  
 Did the patient receive care in an inpatient psychiatric care setting?  
 1. Yes  
 2. No



**STRENGTH**

During the timeframe from (computer to display psyadmdt to psyadmdt + 3 days), is there documentation in the medical record that the patient was screened for at least **two** patient strengths by Psychiatrist, Psychologist, APN, PA, MSW, or RN?

1. Yes
2. No

X. Unable to complete admission screening (Documentation in the medical record that screening for patient strengths cannot be completed due to the patient's inability or unwillingness to answer screening questions within the first 3 days of psychiatric admission.)

**TRAUMAHX (HBIPS)**

During the timeframe from (computer to display psyadmdt to psyadmdt + 3 days), is there documentation in the medical record that the patient was screened for a psychological trauma history by a Psychiatrist, Psychologist, APN, PA, MSW, or RN?

1. Yes
2. No

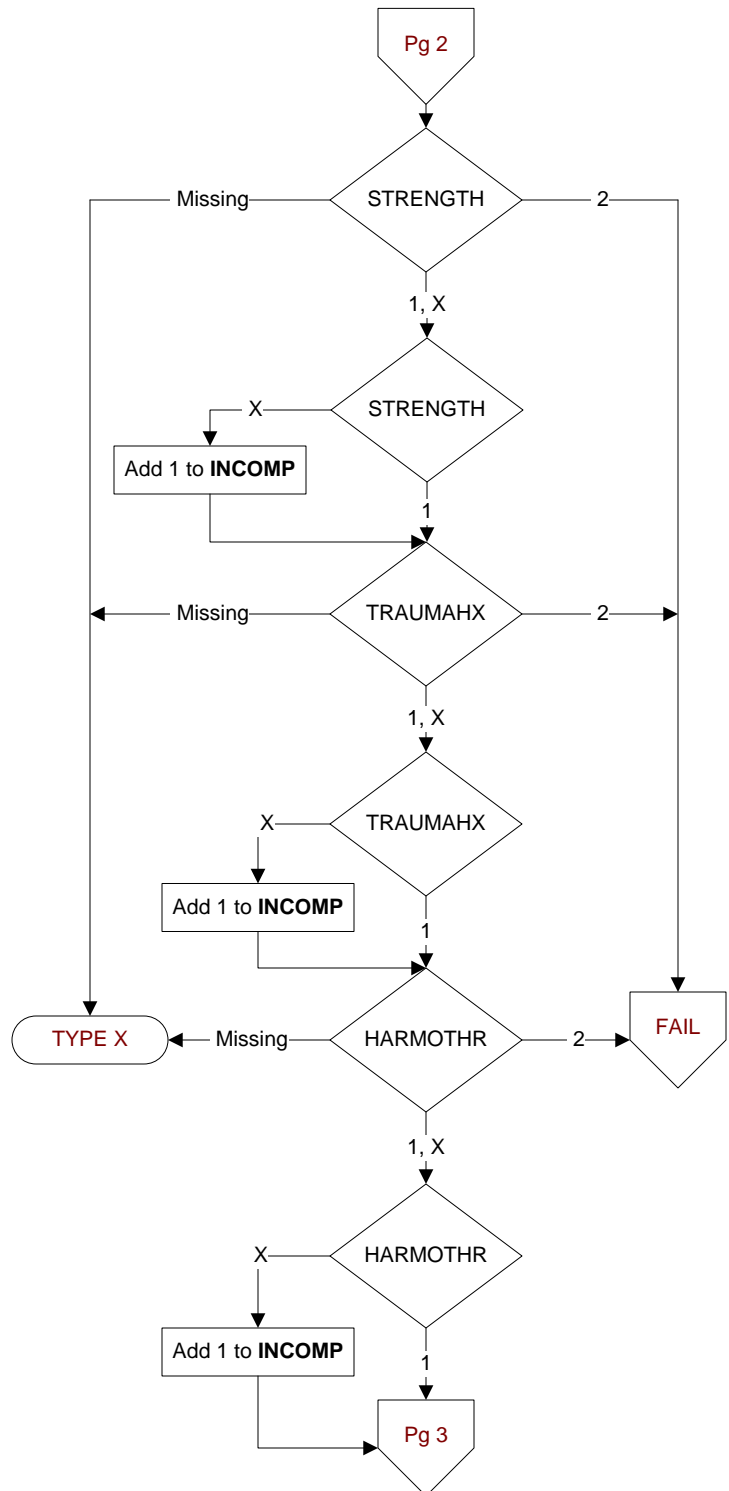
X. Unable to complete admission screening (Documentation in the medical record that a screening for a psychological trauma history cannot be completed due to the patient's inability or unwillingness to answer screening questions within the first 3 days of psychiatric admission.)

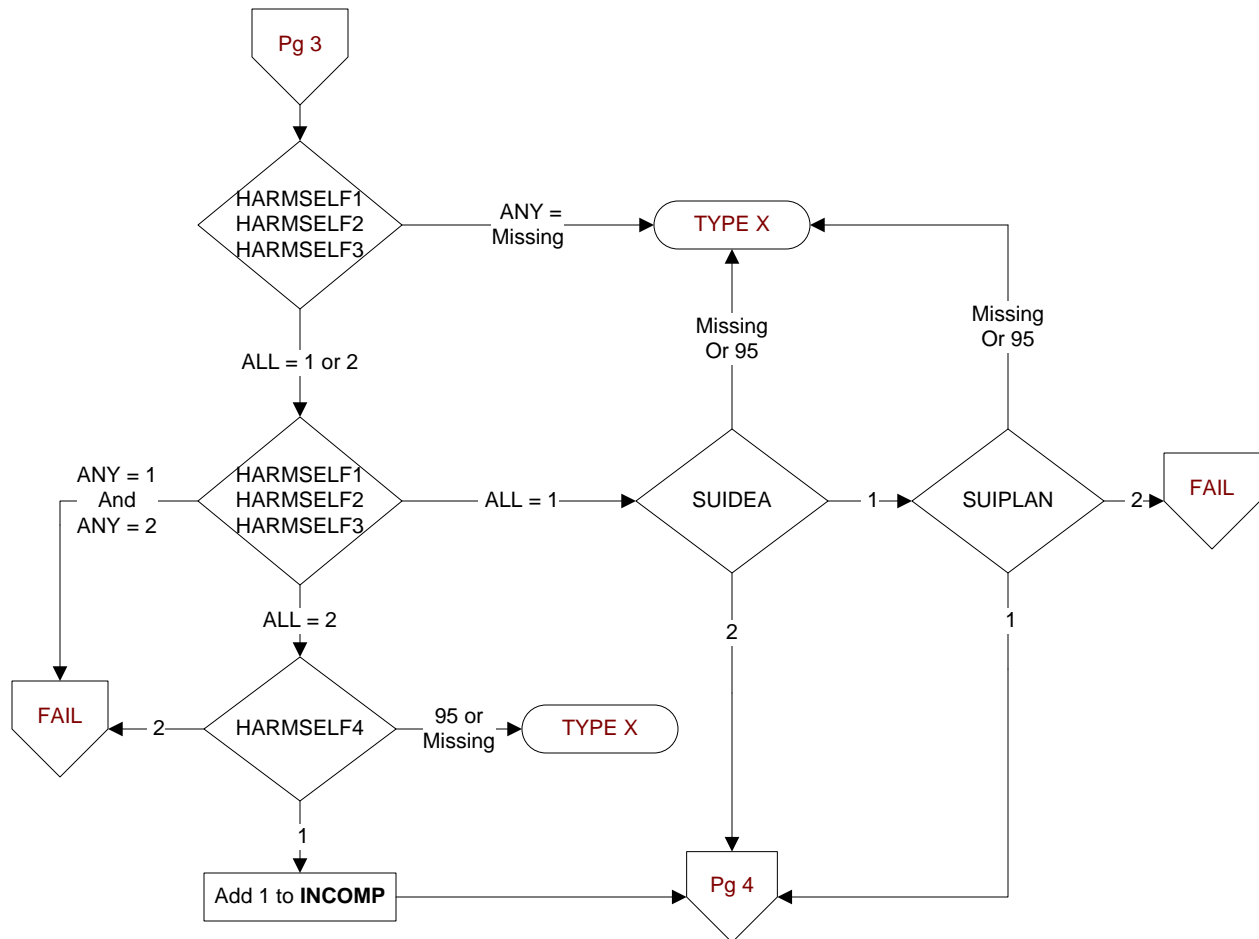
**HARMOTHR (HBIPS)**

During the timeframe from (computer to display psyadmdt to psyadmdt + 3 days), is there documentation in the medical record that the patient was screened for violence risk to others during the past 6 months by a Psychiatrist, Psychologist, APN, PA, MSW, or RN?

1. Yes
2. No

X. Unable to complete admission screening (Documentation in the medical record that a screening for violence risk to others during the past 6 months cannot be completed due to the patient's inability or unwillingness to answer screening questions within the first 3 days of psychiatric admission.)





During the timeframe from [computer to display psyadmdt to psyadmdt + 3 days (or dcdate if psyadmdt + 3 days > dcdate)], is there documentation in the medical record that the patient was screened for the following components of violence risk to self during the past 6 months by a Psychiatrist, Psychologist, APN, PA, MSW, or RN? (HBIPS)

**HARMSELF1.** Suicide ideation during the past 6 months

1. Yes
2. No

**HARMSELF2.** Past suicidal behavior during the past 6 months

1. Yes
2. No

**HARMSELF3.** Risk/protective factors during the past 6 months

1. Yes
2. No

**HARMSELF4.** Unable to complete admission screening (Documentation in the medical record that a screening for violence risk to self during the past 6 months cannot be completed due to the patient's inability or unwillingness to answer screening questions within the first 3 days of psychiatric admission.)

1. Yes
2. No
95. Not applicable

**SUIDEA (HBIPS)**

Is there Psychiatrist, Psychologist, APN, PA, MSW, or RN documentation in the admission screening note for violence risk to self that suicide ideation was present during the past 6 months?

1. Yes
2. No
95. Not applicable

**SUIPLAN (HBIPS)**

Is there Psychiatrist, Psychologist, APN, PA, MSW, or RN documentation in the admission screening note for violence risk to self that the patient was screened for plans/preparation and/or intent to act upon plans for suicide during the past 6 months?

1. Yes
2. No
95. Not applicable

**ASSESSUD** (HBIPS)  
During the timeframe from (computer to display psyadmdt to psyadmdt + 3 days), is there documentation in the medical record that the patient was screened for substance use during the past 12 months by a Psychiatrist, Psychologist, APN, PA, Master of Social Work (MSW), or Registered Nurse?

**The admission screen for substance use, if positive, must include the type, amount, and frequency of use.**

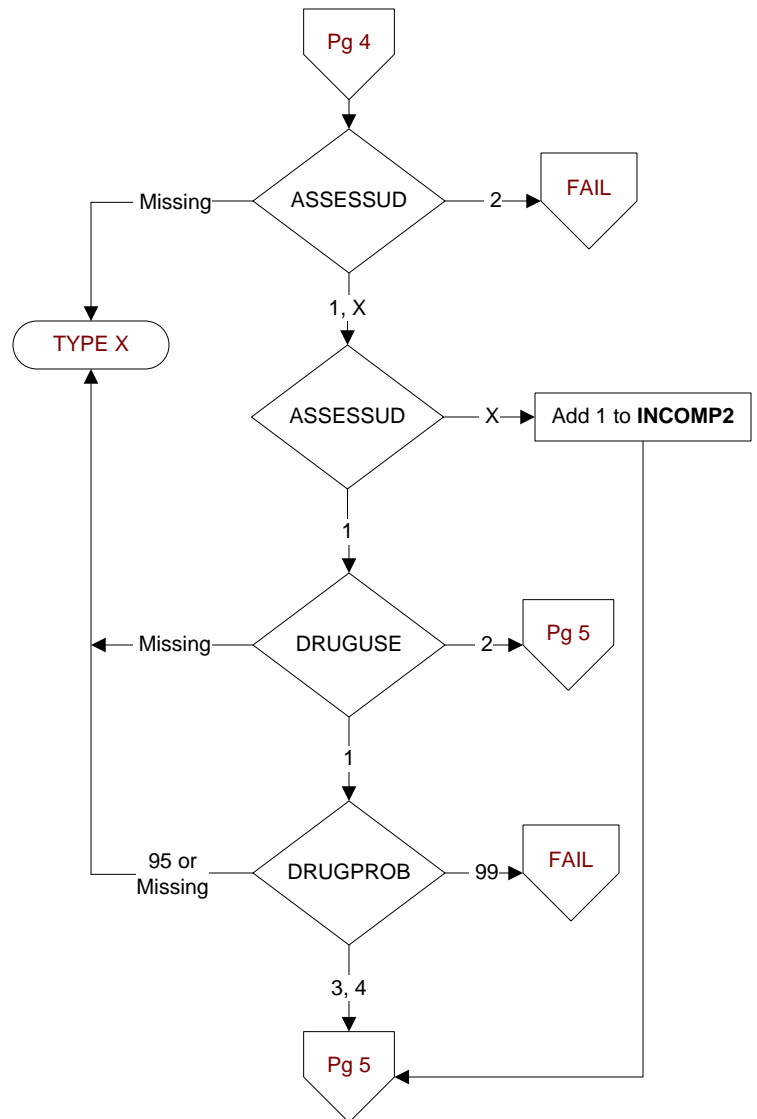
- 1. Yes
- 2. No
- X. Unable to complete admission screening (Documentation in the medical record that a screening for substance use cannot be completed due to the patient's inability or unwillingness to answer screening questions within the first 3 days of psychiatric admission.)

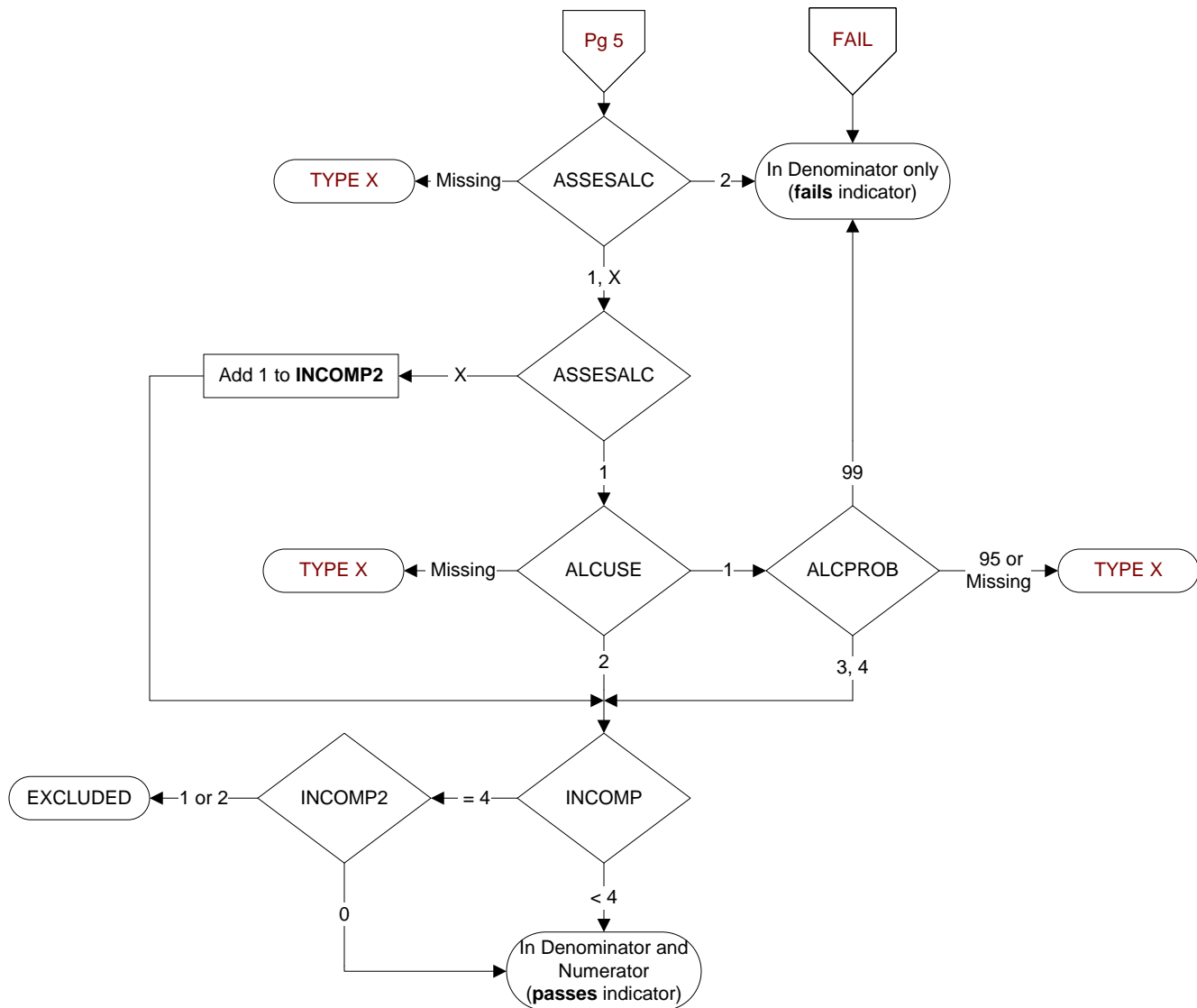
**DRUGUSE** (HBIPS)  
Does the substance use screen document that the patient used any substance during the past 12 months?

- 1. Yes
- 2. No

**DRUGPROB** (HBIPS)  
Does the substance use screen document the patient was asked about any problems due to his/her substance use during the past 12 months?

- 3. Yes, the patient was asked about problems and reported there were problems
- 4. Yes, the patient was asked about problems and reported there were NO problems
- 95. Not applicable
- 99. The patient was not asked about problems or unable to determine from the medical record documentation



**ASSESALC** (HBIPS)

During the timeframe from (computer to display psyadmdt to psyadmdt + 3 days), is there documentation in the medical record that the patient was screened for alcohol use during the past 12 months by a Psychiatrist, Psychologist, APN, PA, Master of Social Work (MSW), or Registered Nurse?

**The admission screen for alcohol use, if positive, must include the type, amount, and frequency of use.**

- 1. Yes
- 2. No
- X. Unable to complete admission screening (Documentation in the medical record that a screening for alcohol use cannot be completed due to the patient's inability or unwillingness to answer screening questions within the first 3 days of psychiatric admission.)

**ALCUSE** (HBIPS)

Does the alcohol use screen document that the patient used alcohol during the past 12 months?

- 1. Yes
- 2. No

**ALCPROB** (HBIPS)

Does the alcohol use screen document the patient was asked about any problems due to his/her alcohol use during the past 12 months?

- 3. Yes, the patient was asked about problems and reported there were problems
- 4. Yes, the patient was asked about problems and reported there were NO problems
- 95. Not applicable
- 99. The patient was not asked about problems or unable to determine from the medical record documentation