**Document Links:**
[Global Measures Instrument](#)

**CATNUM** (rcvd on pull list)  
Sample category number  
70 = Global Measures

**REVSTAT**  
REVIEW STATUS (calculated)  
0. Abstraction has not begun  
1. Abstraction in progress  
2. Abstraction completed w/o errors  
3. TVG failure (exclusion)  
4. Record contains missing required answers (error record)  
5. Administrative Exclusion

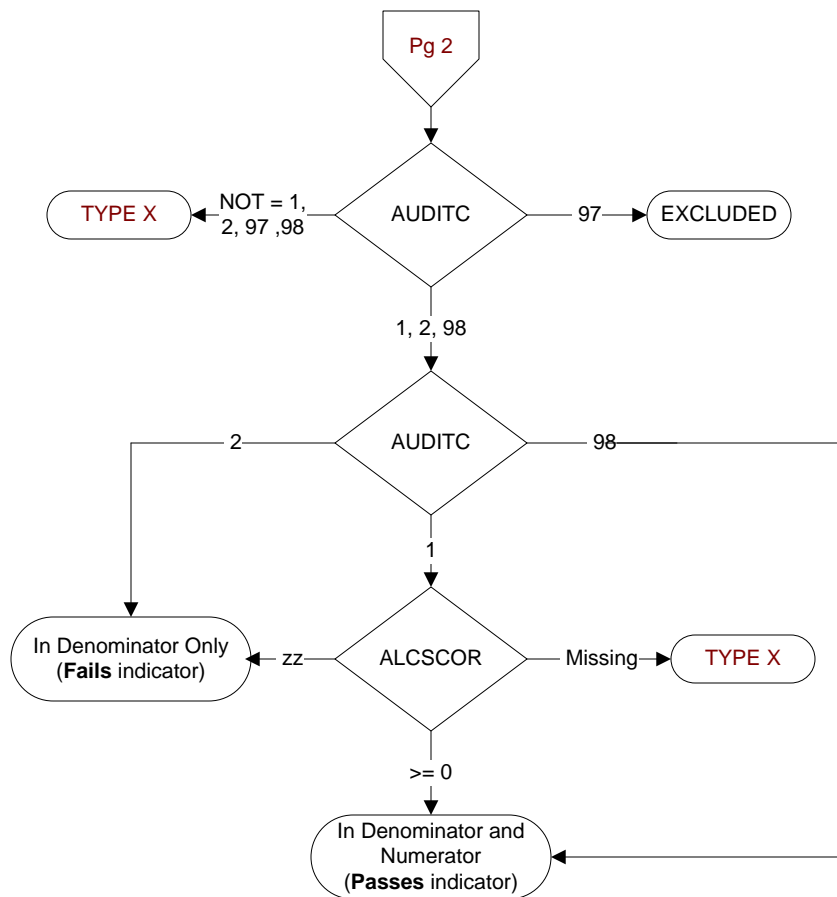
**DCDT** (Global Measures)  
Discharge date (rcvd on pull list and may not be modified)

**ADMDT** (Global Measures)  
Admission date:

**BIRTHDT** (Global Measures)  
Patient date of birth

**AGE** (Calculated)  
ADMDT - BIRTHDT

**COMFORT** (Global Measures)  
When is the earliest physician, APN, or PA documentation of comfort measures only?  
1. Day of arrival (day 0) or day after arrival (day 1)  
2. Two or more days after arrival (day 2 or greater)  
3. Comfort measures only documented during hospital stay, but timing unclear  
99. Comfort measures only was not documented by the physician/APN/PA or unable to determine

**AUDITC** (Global Measures)

Was the patient screened for alcohol misuse with the AUDIT-C within the first day of admission?

1. Yes

2. No

97. The patient was not screened for alcohol use during the first day of admission because of cognitive impairment

98. Patient refused screening for alcohol misuse during the first day of admission

**ALCSCOR** (Global Measures)

Enter the total AUDIT-C score documented within the first day of admission.