

Document Links:

[CGPI Validation Module](#)

[CGPI PI Module](#)

[CGPI Core Module](#)

[CGPI CVD Module](#)

CATNUM

Sample category
 16. AMI - Outpatient visit
 36. SCI Dx
 48. Female, age 20-69
 50. Random Sample
 51. Random Sample MH
 54. Frail/Elderly
 60. DM Outpatient
 61. Inpatient SC
 68. Contract CBOC

FEFLAG (rcvd on pull list)

FE case flagged for CGPI review / scoring?
 0. No
 1. Yes

REVSTAT

REVIEW STATUS (not abstracted)
 0. Abstraction has not begun
 1. Abstraction in progress
 2. Abstraction completed w/o errors
 3. TVG failure (exclusion)
 4. Record contains missing required answers (error record)
 5. Administrative exclusion from all measures

DOCHOSPCE (PI module)

Is one of the following documented in the medical record:
 - the patient is enrolled in a VHA or community-based Hospice program
 - the patient has a diagnosis of cancer of the liver, pancreas, or esophagus
 - on the problem list it is documented the patient's life expectancy is less than 6 months?

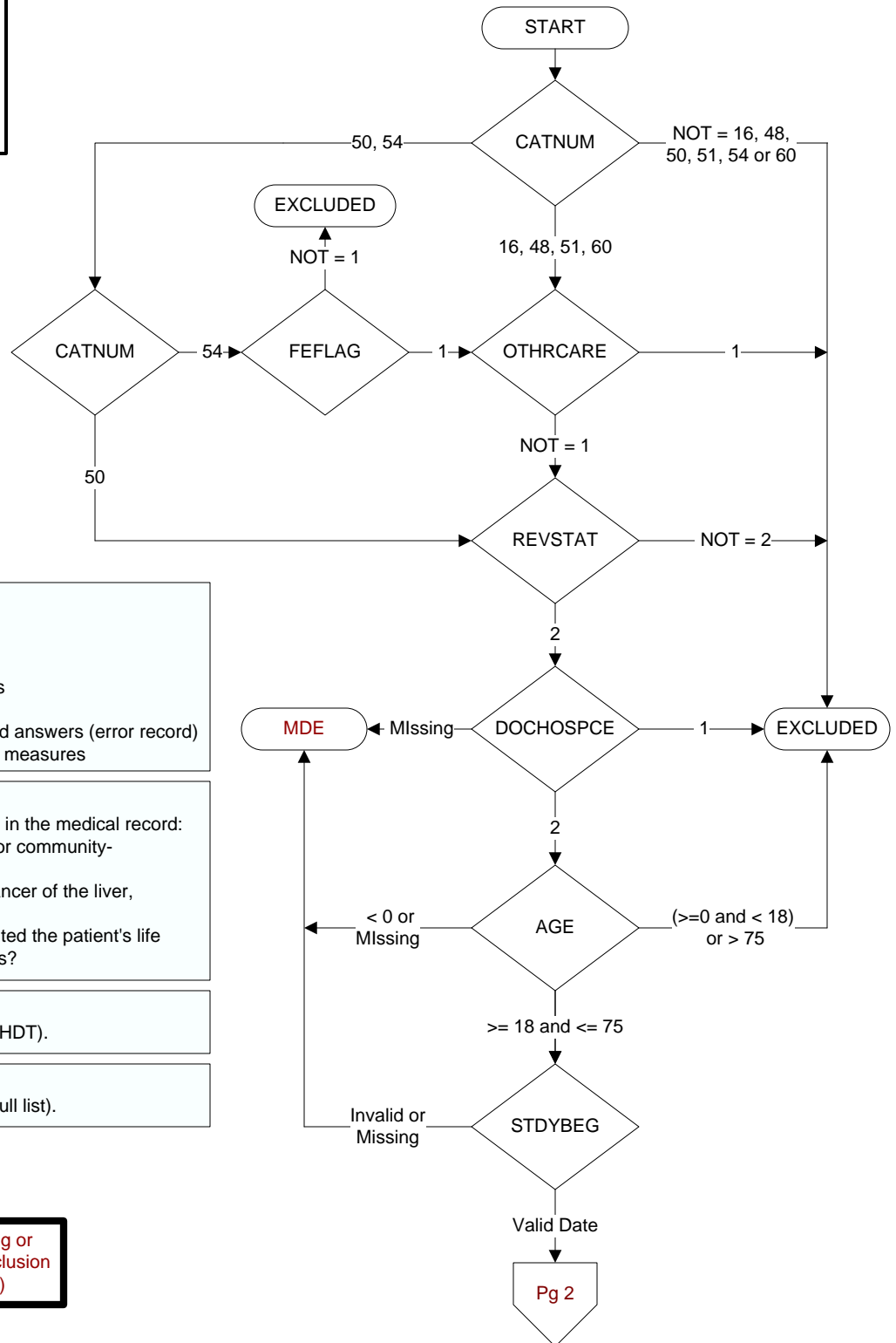
AGE

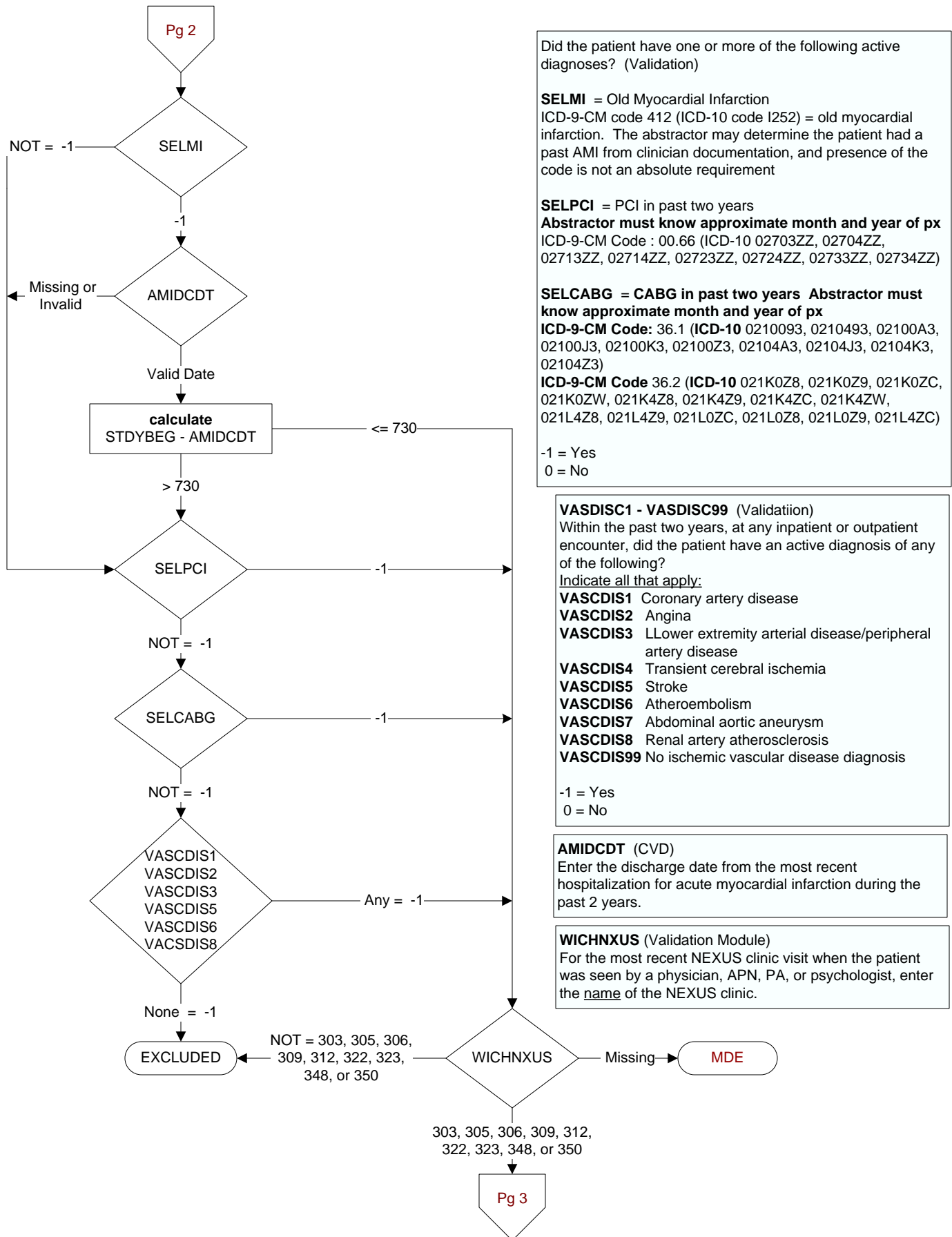
Calculated field (NEXUSDT - BIRTHDT).

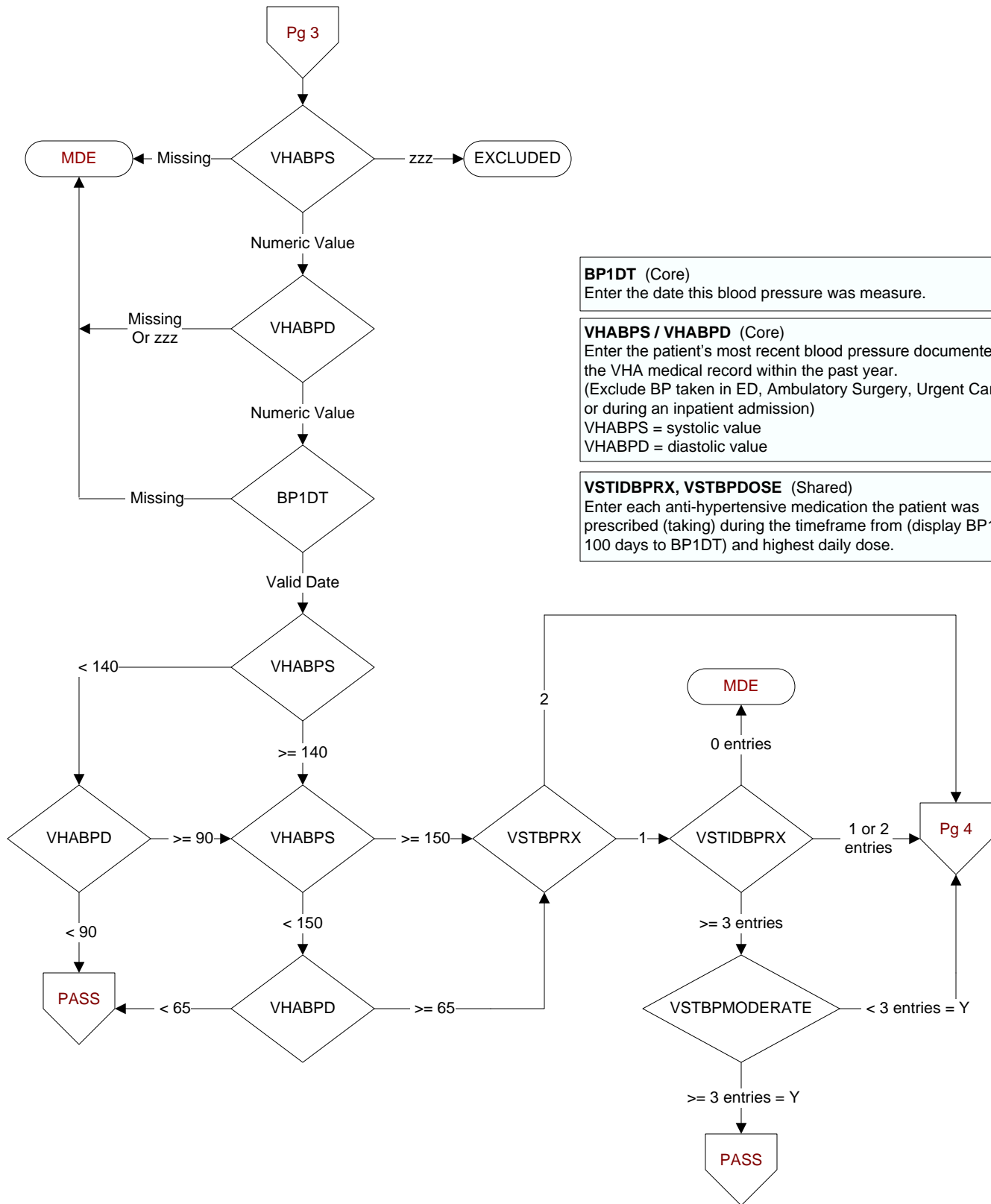
STDYBEG

First day of study period (rcvd on pull list).

MDE = Missing or Invalid Data Exclusion (data error)







BP1DT (Core)

Enter the date this blood pressure was measure.

VHABPS / VHABPD (Core)

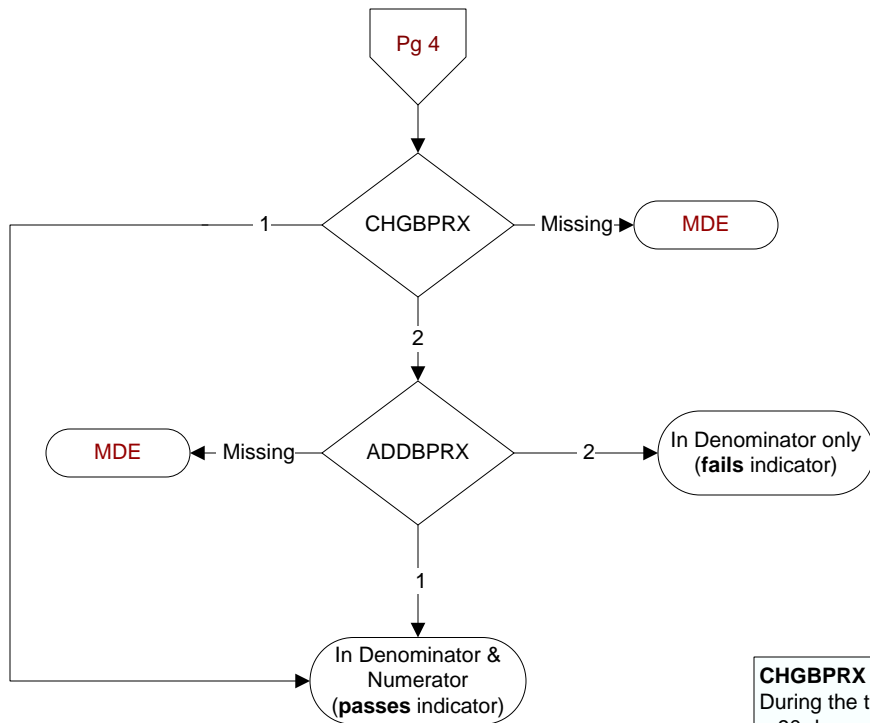
Enter the patient's most recent blood pressure documented in the VHA medical record within the past year.
(Exclude BP taken in ED, Ambulatory Surgery, Urgent Care visit, or during an inpatient admission)

VHABPS = systolic value

VHABPD = diastolic value

VSTIDBPRX, VSTBPDSE (Shared)

Enter each anti-hypertensive medication the patient was prescribed (taking) during the timeframe from (display BP1DT – 100 days to BP1DT) and highest daily dose.



CHGBPRX (Shared)

During the timeframe from (display BP1DT + 1 day to BP1DT + 90 days and <= REVDTE), was a change made to the daily dose of an anti-hypertensive medication(s)?

1. Yes
2. No

ADDBPRX (Shared)

During the timeframe from (display BP1DT + 1 day to BP1DT + 90 days and <= REVDTE) , was a new anti-hypertensive medication added?

1. Yes
2. No