

**Document Links:**[Hospital Outpatient Instrument](#)**REVSTAT**

REVIEW STATUS (not abstracted)

- 0. Abstraction has not begun
- 1. Abstraction in progress
- 2. Abstraction completed w/o errors
- 3. TVG failure (exclusion)
- 4. Record contains missing required answers
- 5. Administrative exclusion from all measures

**CATNUM** (rcvd on pull list)

Sample category number

- 72 = HOP – AMI
- 73 = HOP – Chest Pain
- 74 = HOP – ED
- 75 = HOP – Pain Management
- 76 = HOP – Stroke

**EMCODE** (HOP)

Enter the E/M code documented for this outpatient encounter.

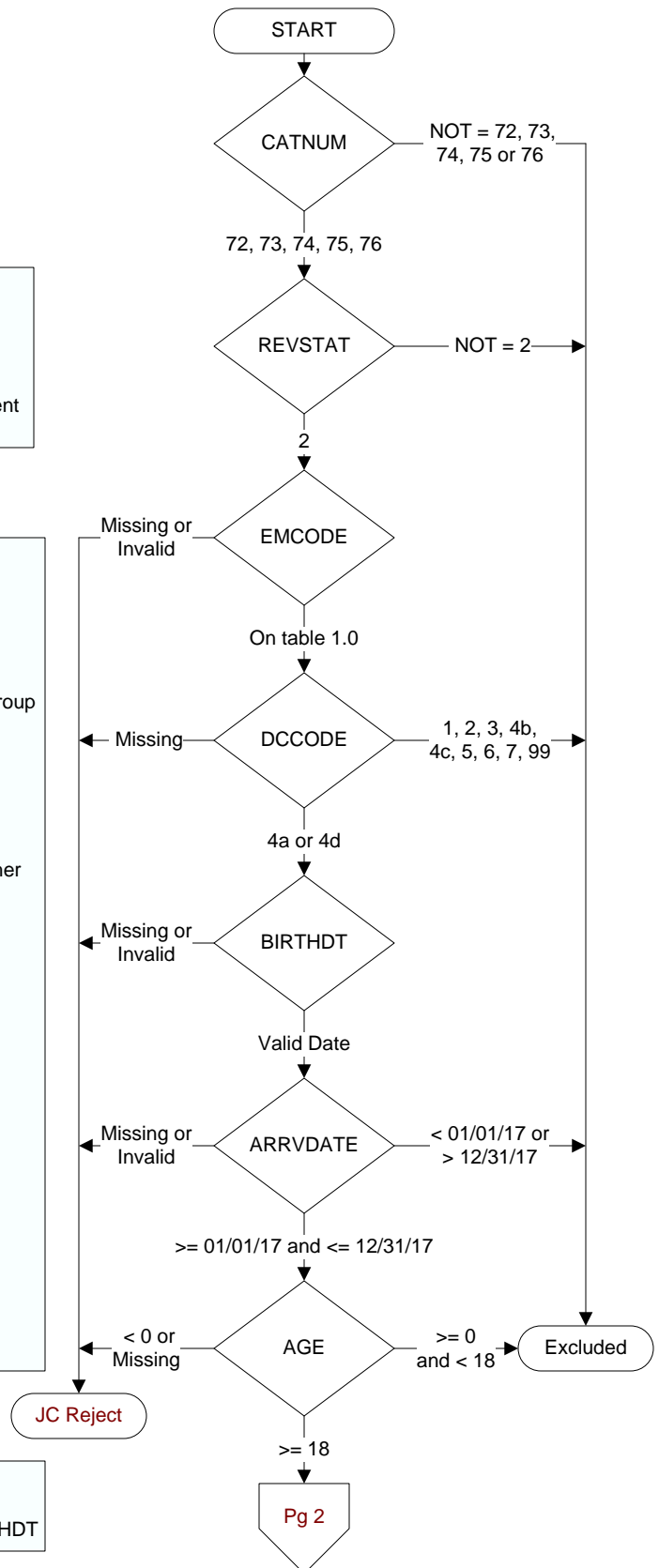
**DCCODE** (HOP)

What was the patient's discharge disposition from the outpatient setting?

- 1. Home
  - Assisted Living Facilities (ALFs) – includes assisted living care at nursing home/facility
  - Court/Law Enforcement – includes detention facilities, jails, and prison
  - Home – includes board and care, domiciliary, foster or residential care, group or personal care homes, retirement communities, and homeless shelters
  - Home with Home Health Services
  - Outpatient Services including outpatient procedures at another hospital, outpatient Chemical Dependency Programs and Partial Hospitalization
- 2. Hospice – Home (or other home setting as listed in #1 above)
- 3. Hospice – Health Care Facility
  - General Inpatient and Respite, Residential and Skilled Facilities, and Other Health Care Facilities
- 4a. Non-VA Acute Care Facility – General Inpatient Care
- 4b. Acute Care Facility – Critical Access Hospital
- 4c. Acute Care Facility - Cancer or Children's Hospitals
- 4d. Acute Care Facility - Department of Defense or Veteran's Administration Hospitals
- 5. Other Health Care Facility
  - Extended or Immediate Care Facility (ECF/ICF)
  - Long Term Acute Care Hospital (LTACH)
  - Nursing Home or Facility including Veteran's Administration Nursing Facility
  - Psychiatric Hospital or Psychiatric Unit of a Hospital
  - Rehabilitation Facility including Inpatient Rehabilitation Facility/Hospital or Rehabilitation Unit of a Hospital
  - Skilled Nursing Facility (SNF), Sub-Acute Care or Swing Bed
  - Transitional Care Unit (TCU)
  - Veteran's Home
- 6. Expired
- 7. Left Against Medical Advice/AMA
- 99. Not documented or unable to determine

**BIRTHDT** (rcvd on pull list)

Patients date of birth.

**ARRVDATE** (HOP)Enter the earliest documented date the patient arrived in the hospital outpatient setting at this VAMC.**AGE**calculated field:  
ARRVDATE - BIRTHDT

**PRINCODE** (HOP)  
Enter the ICD-10-CM principal diagnosis code.

**ECG** (HOP)  
Was an electrocardiogram (ECG) performed within one hour prior to emergency department arrival or in the ED prior to transfer?  
1. Yes  
2. No

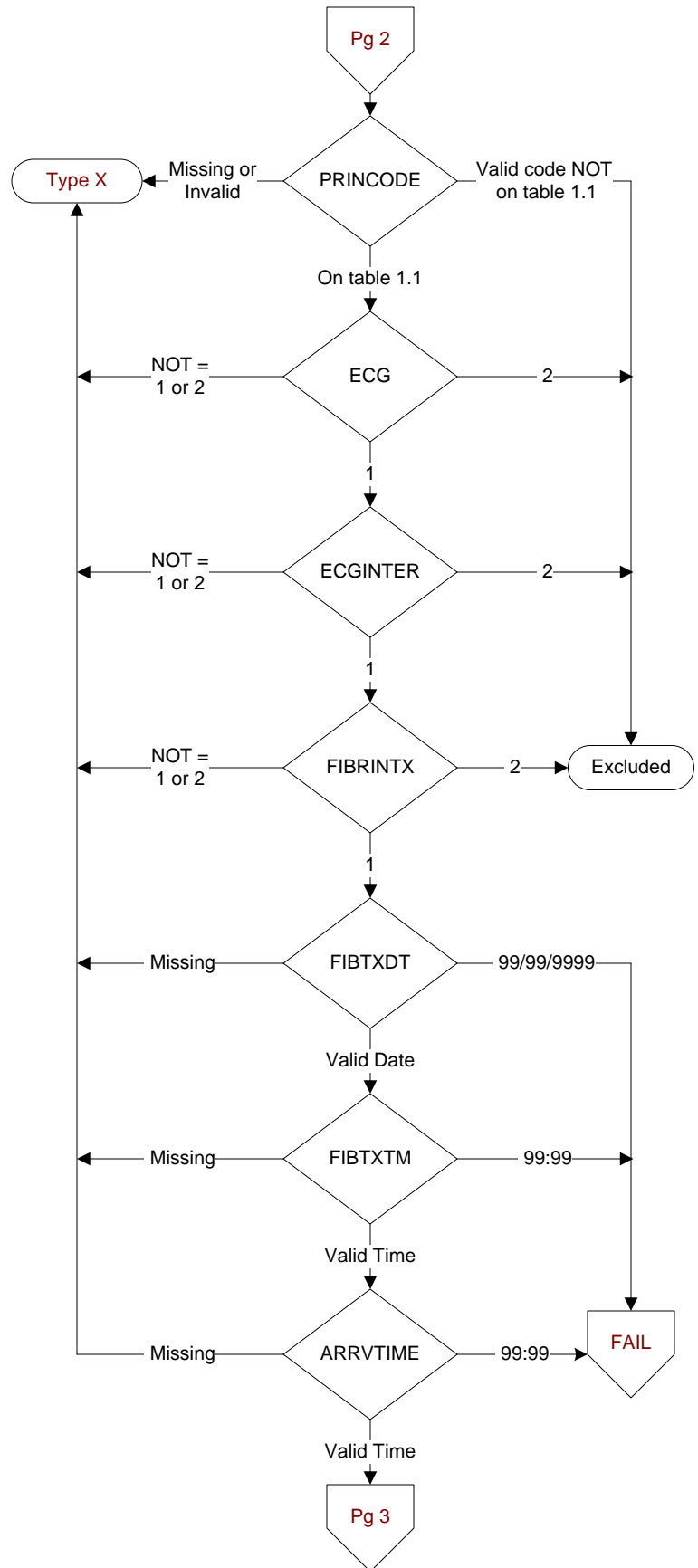
**ECGINTER** (HOP)  
Is there documentation of ST-segment elevation on the ECG performed closest to emergency department arrival?  
1. Yes  
2. No

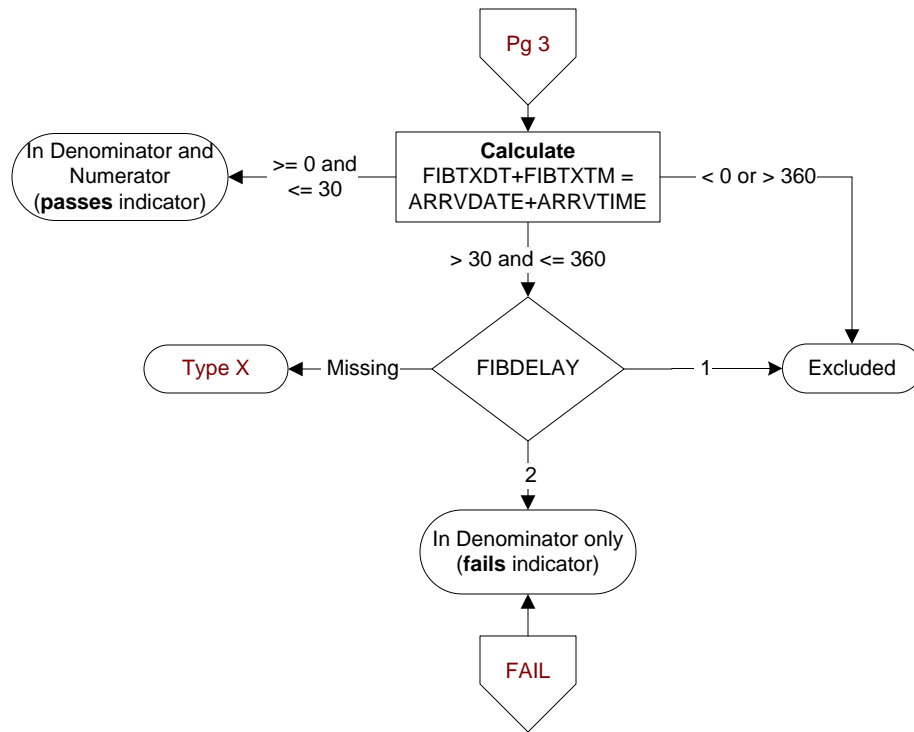
**FIBRINTX** (HOP)  
Did the patient receive fibrinolytic therapy at this emergency department?  
1. Yes  
2. No

**FIBTXDT** (HOP)  
Enter the date primary fibrinolytic therapy was administered at this facility.

**FIBXTM** (Validation)  
Enter the time primary fibrinolytic therapy was administered at this facility.

**ARRVTIME** (HOP)  
Enter the earliest documented time the patient arrived at the outpatient or emergency department at this VAMC.





**FIBDELAY (HOP)**  
 Is there a reason documented by a physician, APN, or  
 PA for a delay in initiating fibrinolytic therapy after  
 hospital arrival?  
 1. Yes  
 2. No