

**Document Links:**[CGPI PI Module](#)[CGPI MH Module](#)**CATNUM**

Sample category

16. AMI - Outpatient visit  
 36. SCI Dx  
 48. Female, age 20-69  
 50. Random Sample  
 51. Random Sample MH  
 54. Frail/Elderly  
 60. DM Outpatient  
 61. Inpatient SC  
 68. Contract CBOC

**REVSTAT**

REVIEW STATUS (not abstracted)

0. Abstraction has not begun  
 1. Abstraction in progress  
 2. Abstraction completed w/o errors  
 3. TVG failure (exclusion)  
 4. Record contains missing required answers  
 5. Administrative exclusion from all measures

**MDE = Missing or  
 Invalid Data Exclusion  
 (data error)**

**FEFLAG** (rcvd on pull list)

FE case flagged for  
 CGPI review / scoring?  
 0. No  
 1. Yes

**DOCHOSPCE** (PI module)Is one of the following documented in the medical record:

- the patient is enrolled in a VHA or community-based Hospice program
- the patient has a diagnosis of cancer of the liver, pancreas, or esophagus
- on the problem list it is documented the patient's life expectancy is less than 6 months?

1. Yes  
 2. No

**DEMENTDX2** (MH)

During the past year, does the record document a diagnosis of dementia/neurocognitive disorder as evidenced by one of the following ICD-10-CM diagnosis codes:

**A8100, A8101, A8109, A812, A8189, A819, F0150, F0151, F0280, F0281, F0390, F0391, F1027, F1997, G231, G300, G301, G308, G309, G3101, G3109, G3183, G903**

1. Yes  
 2. No

**DEMSEV** (MH)

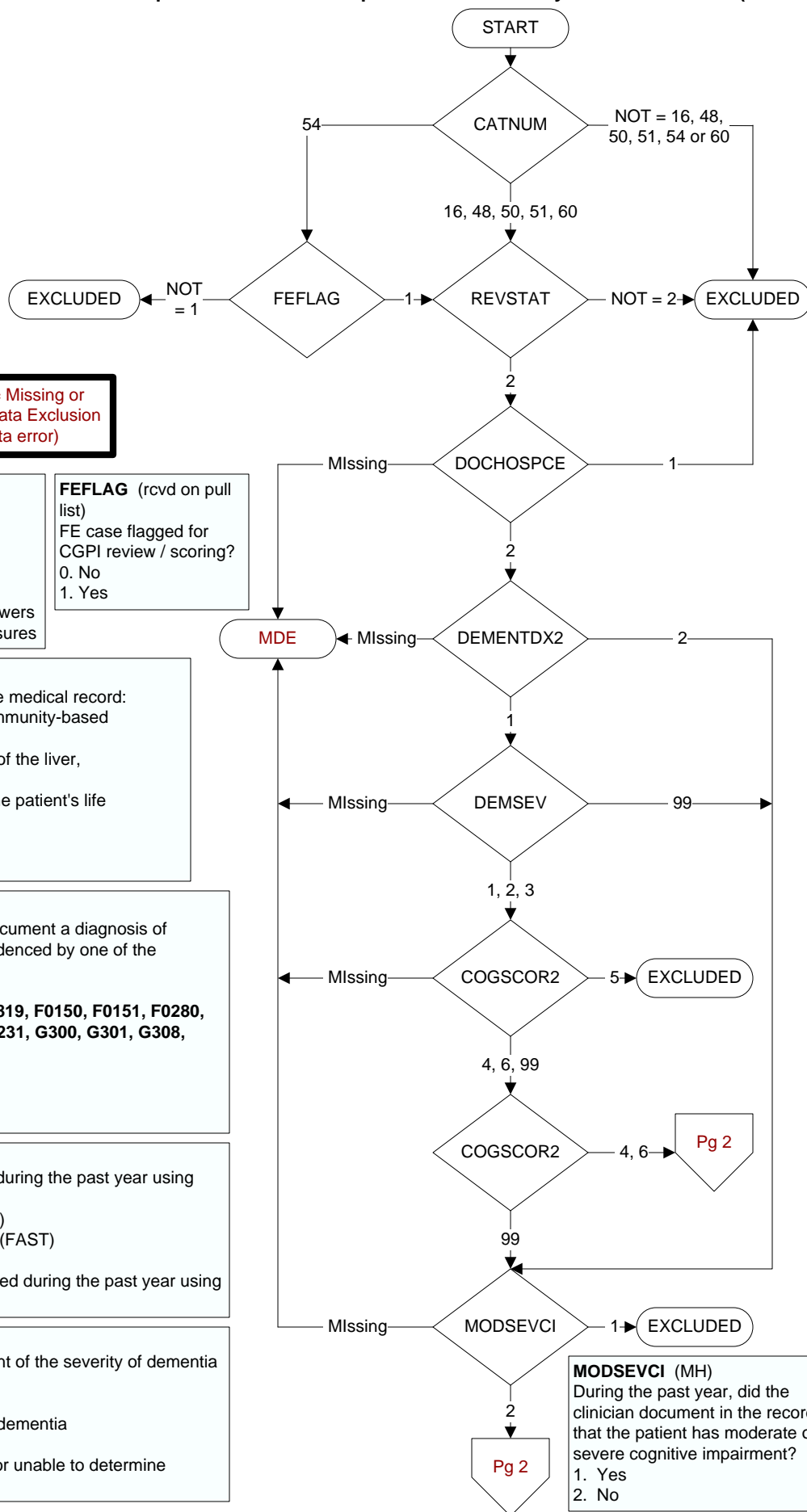
Was the severity of dementia assessed during the past year using one of the following standardized tools?

1. Clinical Dementia Rating Scale (CDR)  
 2. Functional Assessment Staging Tool (FAST)  
 3. Global Deterioration Scale (GDS)  
 99. Severity of dementia was not assessed during the past year using one of the specified tools

**COGSCOR2** (MH)

What was the outcome of the assessment of the severity of dementia assessment?

4. Score indicated mild dementia  
 5. Score indicated moderate to severe dementia  
 6. Score indicated no dementia  
 99. No score documented in the record or unable to determine outcome



**MODSEVCI** (MH)  
 During the past year, did the clinician document in the record that the patient has moderate or severe cognitive impairment?  
 1. Yes  
 2. No

