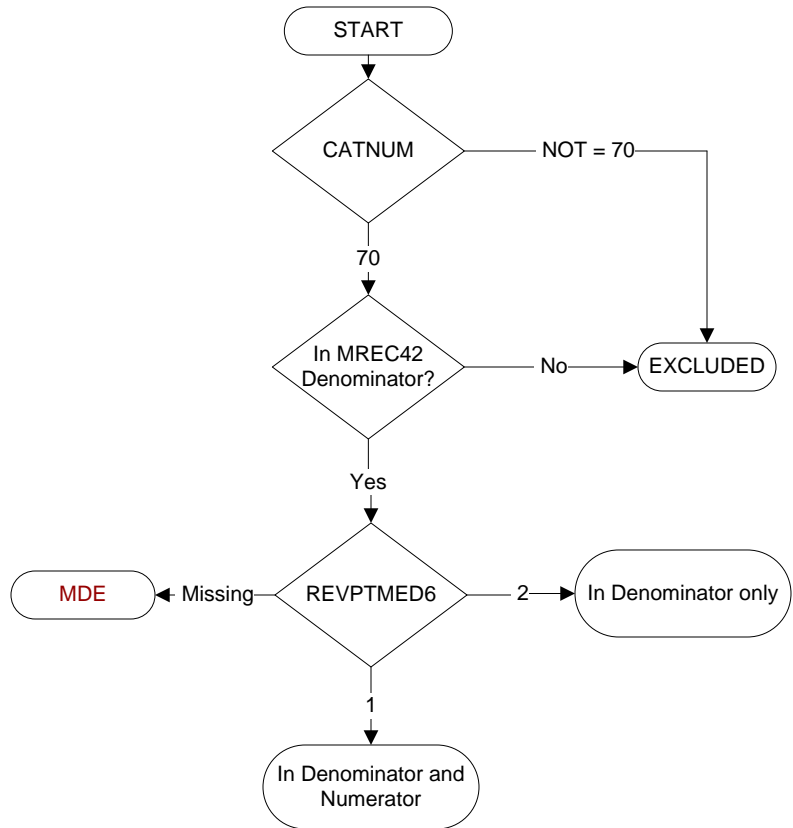


Document Links:

[Global Measures Instrument](#)
[Inpt MedRecon Module](#)

MDE = Missing or
 Invalid Data Exclusion
 (data error)

**CATNUM**

Sample Cohort (rcvd on pull list)
 70. Global Measures

REVPTMED1-6 (IP MedRec)

Upon admission or during the 24 hours after admission, is there evidence in the medical record that a member of the health care team reviewed the patient's list of medications and/or a medication list for review to include all of the following components with the patient/caregiver?

Medication List Component**REVPTMED1. Active VA Prescriptions**

1. Yes
2. No

REVPTMED2. Remote Active VA Prescriptions

1. Yes
2. No

REVPTMED3. Non-VA Medications

1. Yes
2. No

REVPTMED4. Recently Expired VA Prescriptions (see D/D rules)

1. Yes
2. No

REVPTMED5. Recently Discontinued VA Prescriptions (see D/D rules)

1. Yes
2. No

REVPTMED6. Pending Medication Orders where relevant (e.g., patient is seen by multiple providers in the same day)

1. Yes
2. No