

**Document Links:**[Global Measures Instrument](#)[Inpt MedRecon Module](#)**REVSTAT**

REVIEW STATUS (not abstracted)

0. Abstraction has not begun
1. Abstraction in progress
2. Abstraction completed w/o errors
3. TVG failure (exclusion)
4. Record contains missing required answers
5. Administrative exclusion from all measures

**CATNUM**

Sample Cohort (rcvd on pull list)  
70. Global Measures

**EMLR (IP MedRec)**

Upon admission or during the 24 hours after admission, is there documentation of an Essential Medication List for Review (EMLR) in the medical record?

1. Yes
2. No

**REVPTMED1-6 (IP MedRec)**

Upon admission or during the 24 hours after admission, is there evidence in the medical record that a member of the health care team reviewed the patient's list of medications and/or a medication list for review to include all of the following components with the patient/caregiver?

**Medication List Component****REVPTMED1.** Active VA Prescriptions

1. Yes
2. No

**REVPTMED2.** Remote Active VA Prescriptions

1. Yes
2. No

**REVPTMED3.** Non-VA Medications

1. Yes
2. No

**REVPTMED4.** Recently Expired VA Prescriptions (see D/D rules)

1. Yes
2. No

**REVPTMED5.** Recently Discontinued VA Prescriptions (see D/D rules)

1. Yes
2. No

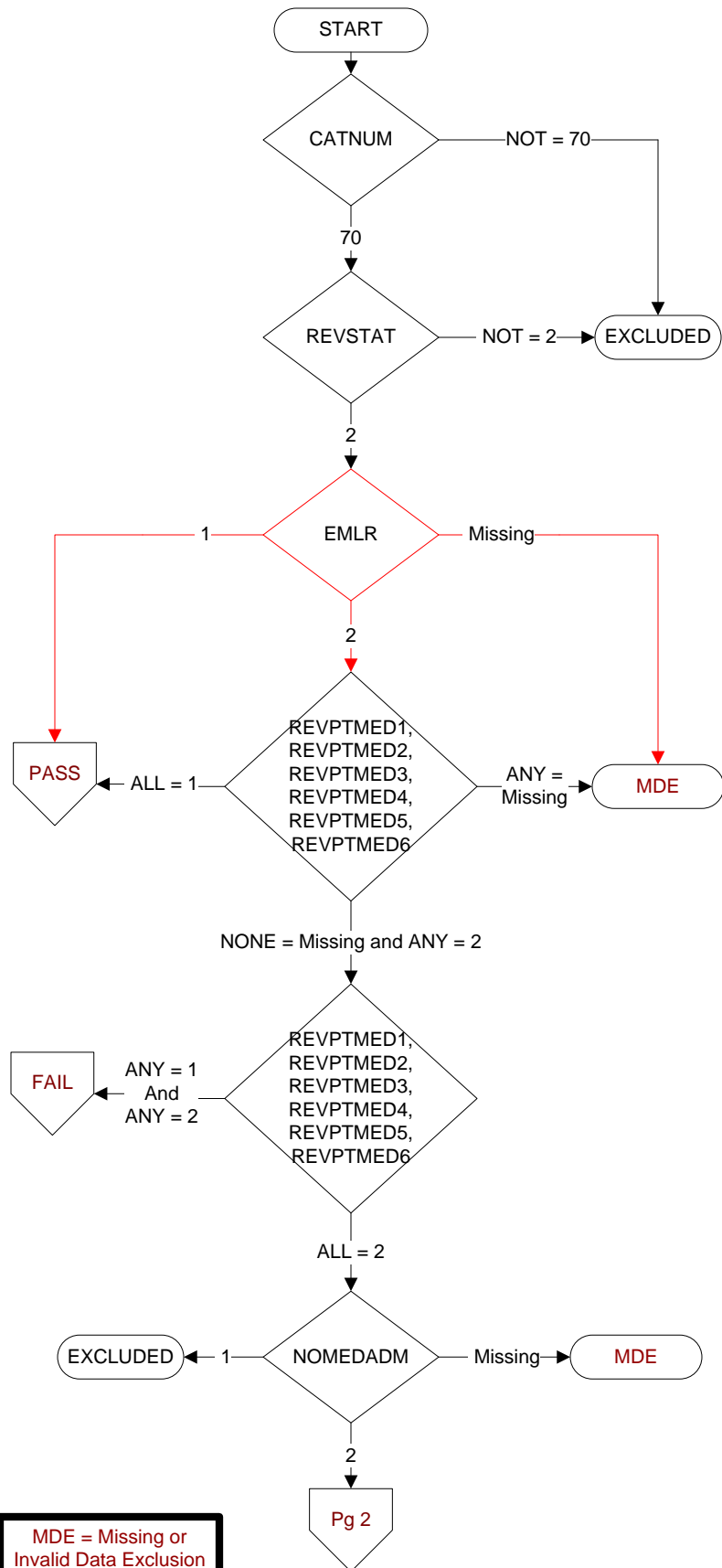
**REVPTMED6.** Pending Medication Orders where relevant (e.g., patient is seen by multiple providers in the same day)

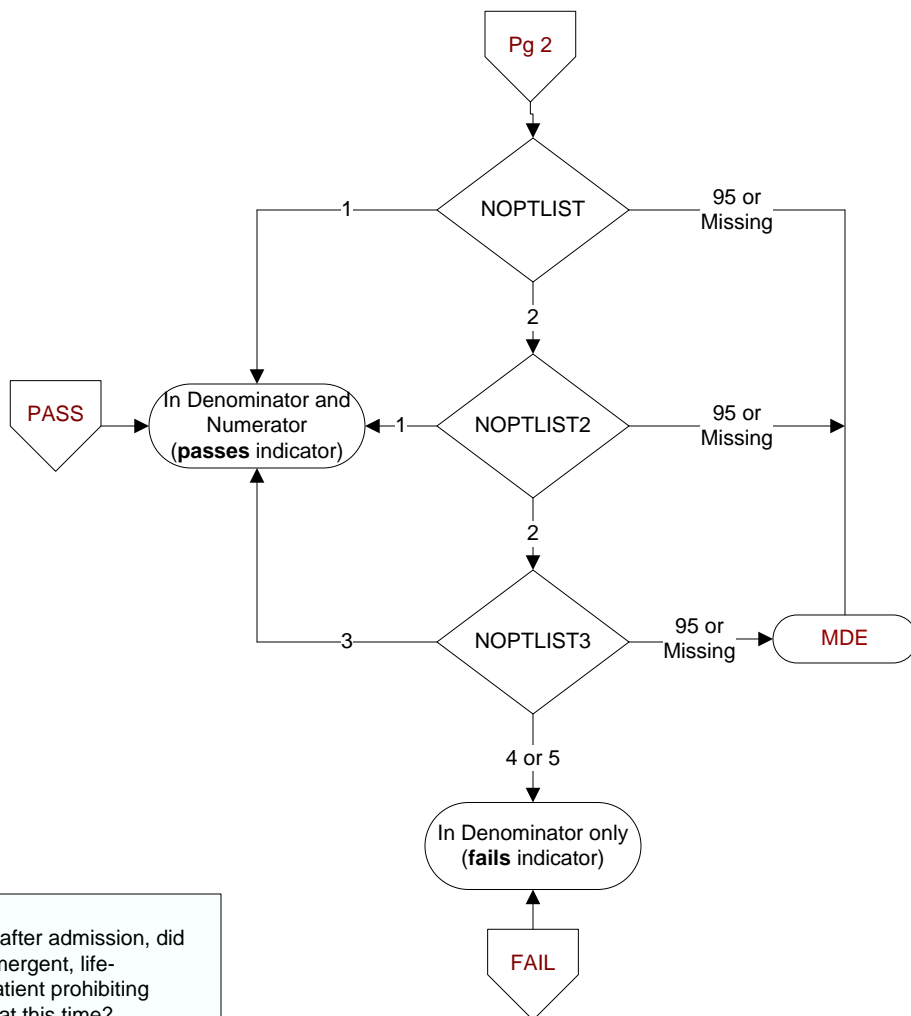
1. Yes
2. No

**NOMEDADM (IP MedRec)**

Upon admission or during the 24 hours after admission, did a member of the health care team document the patient was not taking any medications upon admission?

1. Yes
2. No





**NOPTLIST** (IP MedRec)

Upon admission or during the 24 hours after admission, did the medical record document that an emergent, life-threatening situation existed with this patient prohibiting completion of medication reconciliation at this time?

1. Yes
2. No

**NOPTLIST2** (IP MedRec)

Upon admission or during the 24 hours after admission, did a member of the health care team document that the patient and/or caregiver were unable to confirm the patient's medications?

1. Yes
2. No

**NOPTLIST3** (IP MedRec)

Upon admission or during the 24 hours after admission, did a member of the health care team document at least two attempts to obtain the patient's medication list from a referring facility?

3. Yes
4. No
5. Patient was not referred from another facility