

Document Links:[HBIPS Instrument](#)

CATNUM (rcvd on pull list)
Sample category number
58 – Hospital Based Inpatient Psychiatric Services

REVSTAT
REVIEW STATUS (not abstracted)
0. Abstraction has not begun
1. Abstraction in progress
2. Abstraction completed w/o errors
3. TVG failure (exclusion)
4. Record contains missing required answers (error record)
5. Administrative exclusion from all measures

DCDATE

Discharge date from
hospital:

ADMDT

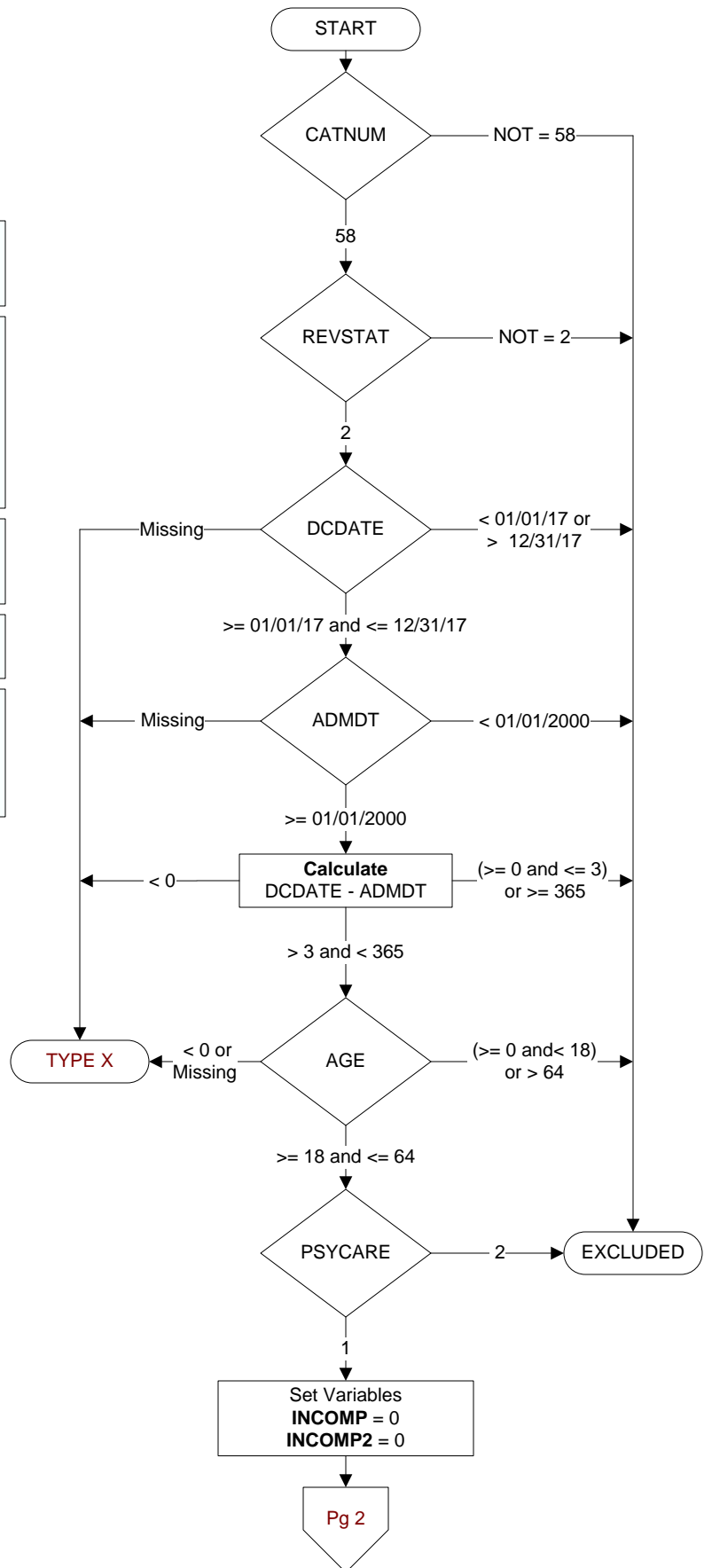
Date of admission to inpatient
care:

AGE (calculated field)
ADMDT - BIRTHDT

PSYCARE

Did the patient receive care in an inpatient psychiatric care
setting?

1. Yes
2. No



STRENGTH

During the timeframe from (computer to display psyadmdt to psyadmdt + 3 days), is there documentation in the medical record that the patient was screened for at least **two** patient strengths by a Psychiatrist, Psychologist, APN, PA, Master of Social Work (MSW), or Registered Nurse?

1. Yes
2. No

X. Unable to complete admission screening (Documentation in the medical record that screening for patient strengths cannot be completed due to the patient's inability or unwillingness to answer screening questions within the first 3 days of psychiatric admission.)

TRAUMAHX (HBIPS)

During the timeframe from (computer to display psyadmdt to psyadmdt + 3 days), is there documentation in the medical record that the patient was screened for a psychological trauma history by a Psychiatrist, Psychologist, APN, PA, Master of Social Work (MSW), or Registered Nurse?

1. Yes
2. No

X. Unable to complete admission screening (Documentation in the medical record that a screening for a psychological trauma history cannot be completed due to the patient's inability or unwillingness to answer screening questions within the first 3 days of psychiatric admission.)

HARMOTHR (HBIPS)

During the timeframe from (computer to display psyadmdt to psyadmdt + 3 days), is there documentation in the medical record that the patient was screened for violence risk to others during the past 6 months by a Psychiatrist, Psychologist, APN, PA, Master of Social Work (MSW), or Registered Nurse?

1. Yes
2. No

X. Unable to complete admission screening (Documentation in the medical record that a screening for violence risk to others during the past 6 months cannot be completed due to the patient's inability or unwillingness to answer screening questions within the first 3 days of psychiatric admission.)

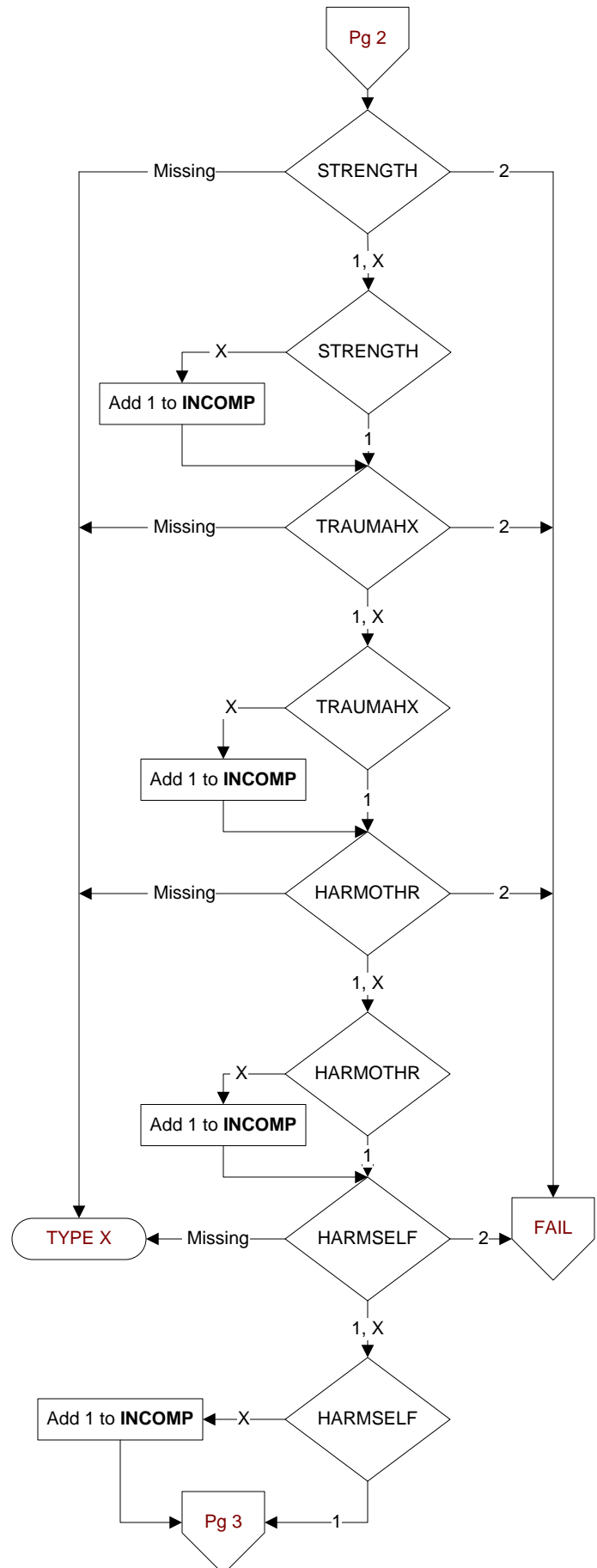
HARMSELF (HBIPS)

During the timeframe from (computer to display psyadmdt to psyadmdt + 3 days), is there documentation in the medical record that the patient was screened for violence risk to self during the past 6 months by a Psychiatrist, Psychologist, APN, PA, Master of Social Work (MSW), or Registered Nurse?

The admission screen for violence risk to self must include suicide ideation, plans/preparation and/or intent to act if ideation present, past suicidal behavior, and risk/protective factors.

1. Yes
2. No

X. Unable to complete admission screening (Documentation in the medical record that a screening for violence risk to self during the past 6 months cannot be completed due to the patient's inability or unwillingness to answer screening questions within the first 3 days of psychiatric admission.)



ASSESSUD (HBIPS)
During the timeframe from (computer to display psyadmdt to psyadmdt + 3 days), is there documentation in the medical record that the patient was screened for substance use during the past 12 months by a Psychiatrist, Psychologist, APN, PA, Master of Social Work (MSW), or Registered Nurse?

The admission screen for substance use, if positive, must include the type, amount, and frequency of use.

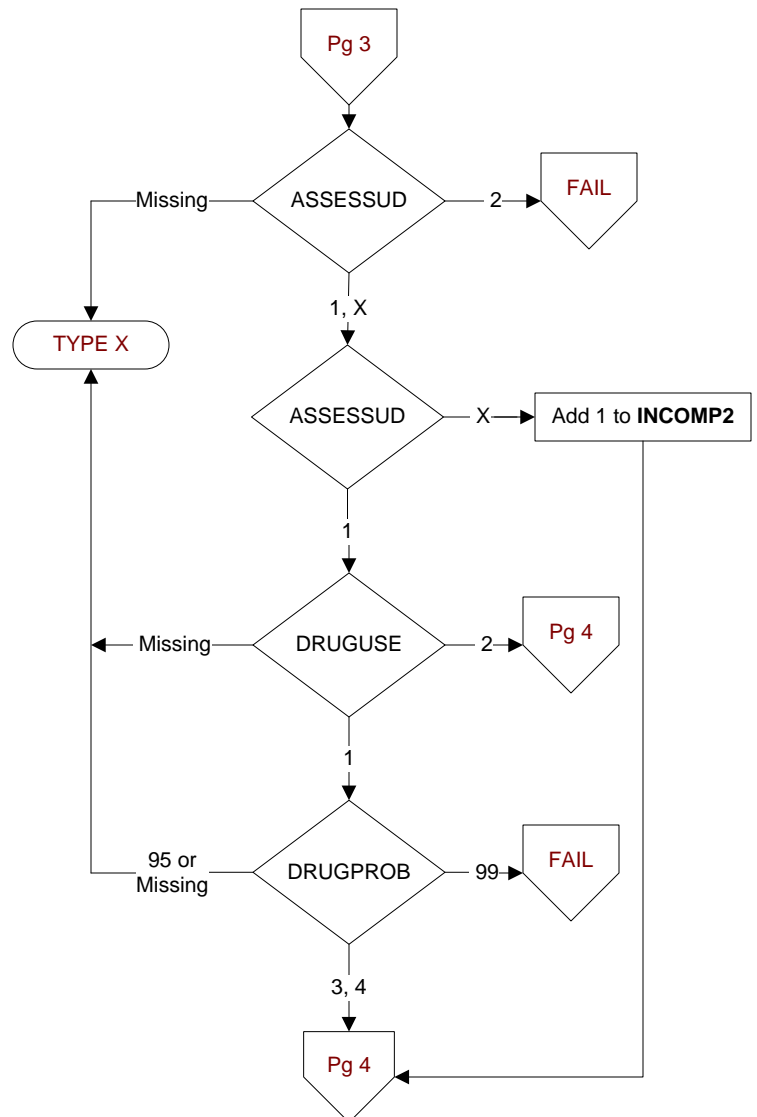
1. Yes
2. No
X. Unable to complete admission screening (Documentation in the medical record that a screening for substance use cannot be completed due to the patient's inability or unwillingness to answer screening questions within the first 3 days of psychiatric admission.)

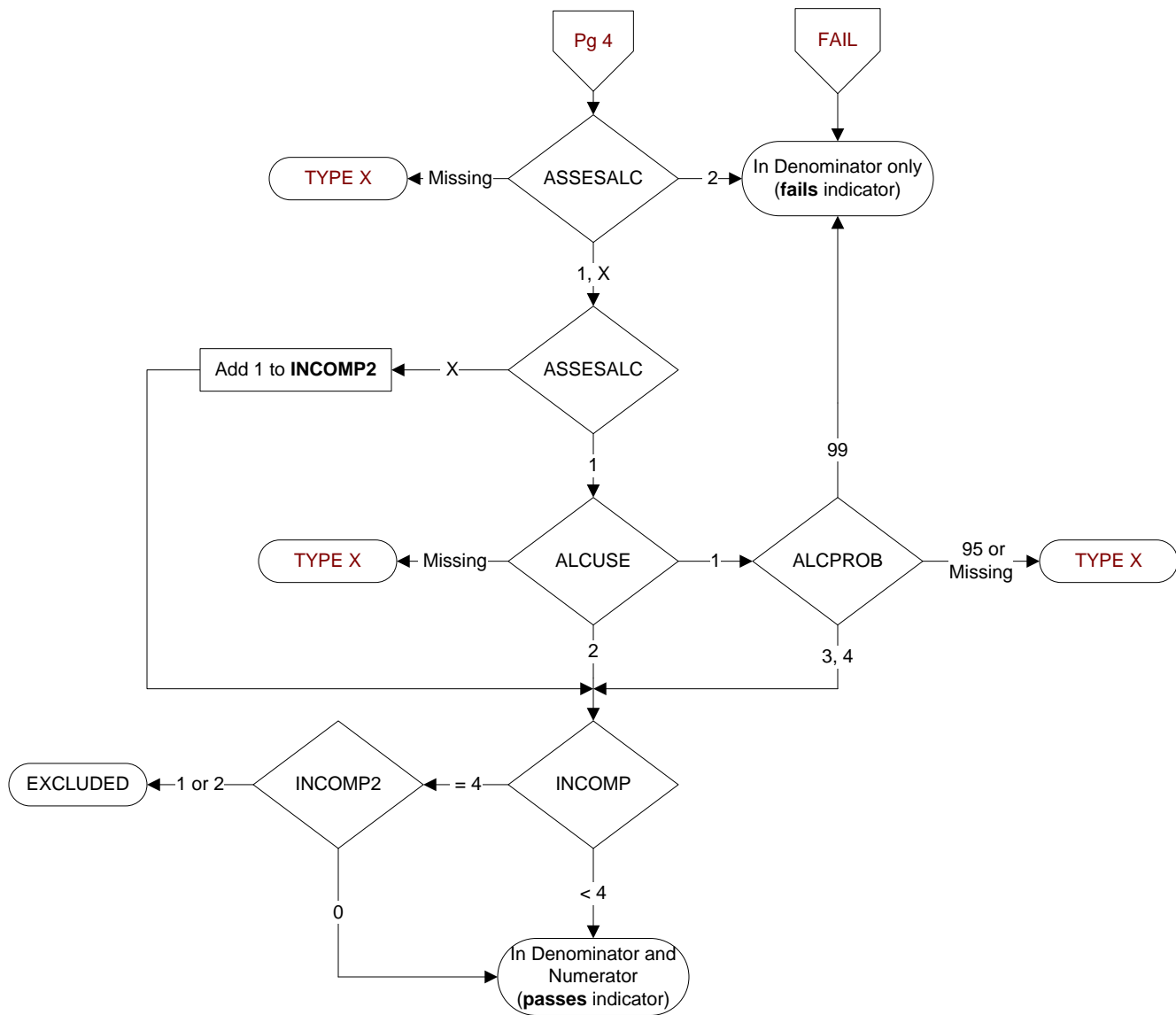
DRUGUSE (HBIPS)
Does the substance use screen document that the patient used any substance during the past 12 months?

1. Yes
2. No

DRUGPROB (HBIPS)
Does the substance use screen document the patient was asked about any problems due to his/her substance use during the past 12 months?

3. Yes, the patient was asked about problems and reported there were problems
4. Yes, the patient was asked about problems and reported there were NO problems
95. Not applicable
99. The patient was not asked about problems or unable to determine from the medical record documentation



**ASSESALC** (HBIPS)

During the timeframe from (computer to display psyadmdt to psyadmdt + 3 days), is there documentation in the medical record that the patient was screened for alcohol use during the past 12 months by a Psychiatrist, Psychologist, APN, PA, Master of Social Work (MSW), or Registered Nurse?

The admission screen for alcohol use, if positive, must include the type, amount, and frequency of use.

1. Yes
2. No
- X. Unable to complete admission screening (Documentation in the medical record that a screening for alcohol use cannot be completed due to the patient's inability or unwillingness to answer screening questions within the first 3 days of psychiatric admission.)

ALCUSE (HBIPS)

Does the alcohol use screen document that the patient used alcohol during the past 12 months?

1. Yes
2. No

ALCPROB (HBIPS)

Does the alcohol use screen document the patient was asked about any problems due to his/her alcohol use during the past 12 months?

3. Yes, the patient was asked about problems and reported there were problems
4. Yes, the patient was asked about problems and reported there were NO problems
95. Not applicable
99. The patient was not asked about problems or unable to determine from the medical record documentation