

Document Links:[HBPC Instrument](#)**CATNUM**

Sample cohort
HBPC – Home Based Primary Care

REVSTAT

REVIEW STATUS (not abstracted)

0. Abstraction has not begun
1. Abstraction in progress
2. Abstraction completed w/o errors
3. TVG failure (exclusion)
4. Record contains missing required answers
5. Administrative Exclusion

DOCHOSPCE

Is one of the following documented in the medical record?

- The patient is enrolled in a VHA or community-based Hospice program
 - The patient has a diagnosis of cancer of the liver, pancreas, or esophagus
 - On the problem list it is documented the patient's life expectancy is less than 6 months?
1. Yes
 2. No

DEMENTDX2 (HBPC)

During the past year, does the record document a diagnosis of dementia/neurocognitive disorder as evidenced by one of the following ICD-10-CM diagnosis codes:

A8100, A8101, A8109, A812, A8189, A819, F0150, F0151, F0280, F0281, F0390, F0391, F1027, F1997, G231, G300, G301, G308, G309, G3101, G3109, G3183, G903

1. Yes
2. No

DEMSEV (HBPC)

Was the severity of dementia assessed during the past year using one of the following standardized tools?

1. Clinical Dementia Rating Scale (CDR)
2. Functional Assessment Staging Tool (FAST)
3. Global Deterioration Scale (GDS)
99. Severity of dementia was not assessed during the past year using one of the specified tools

COGSCOR2 (HBPC)

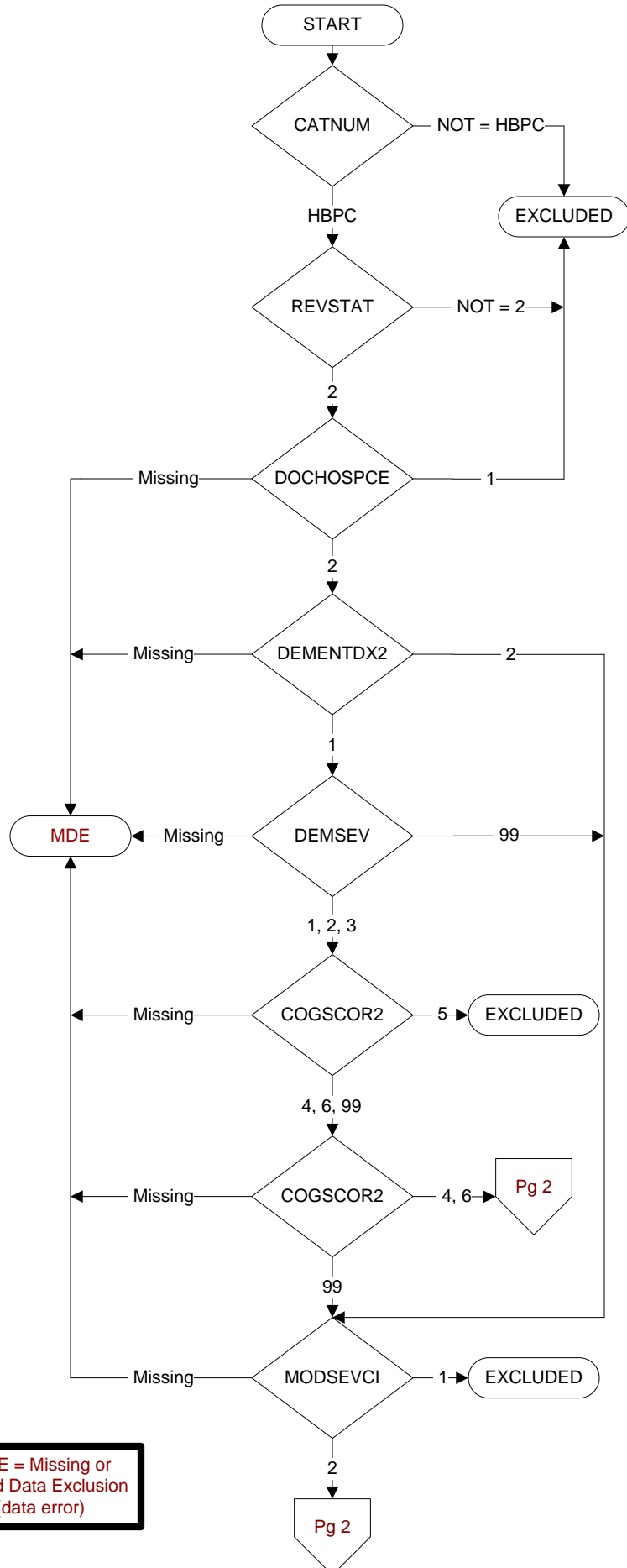
What was the outcome of the assessment of the severity of dementia assessment?

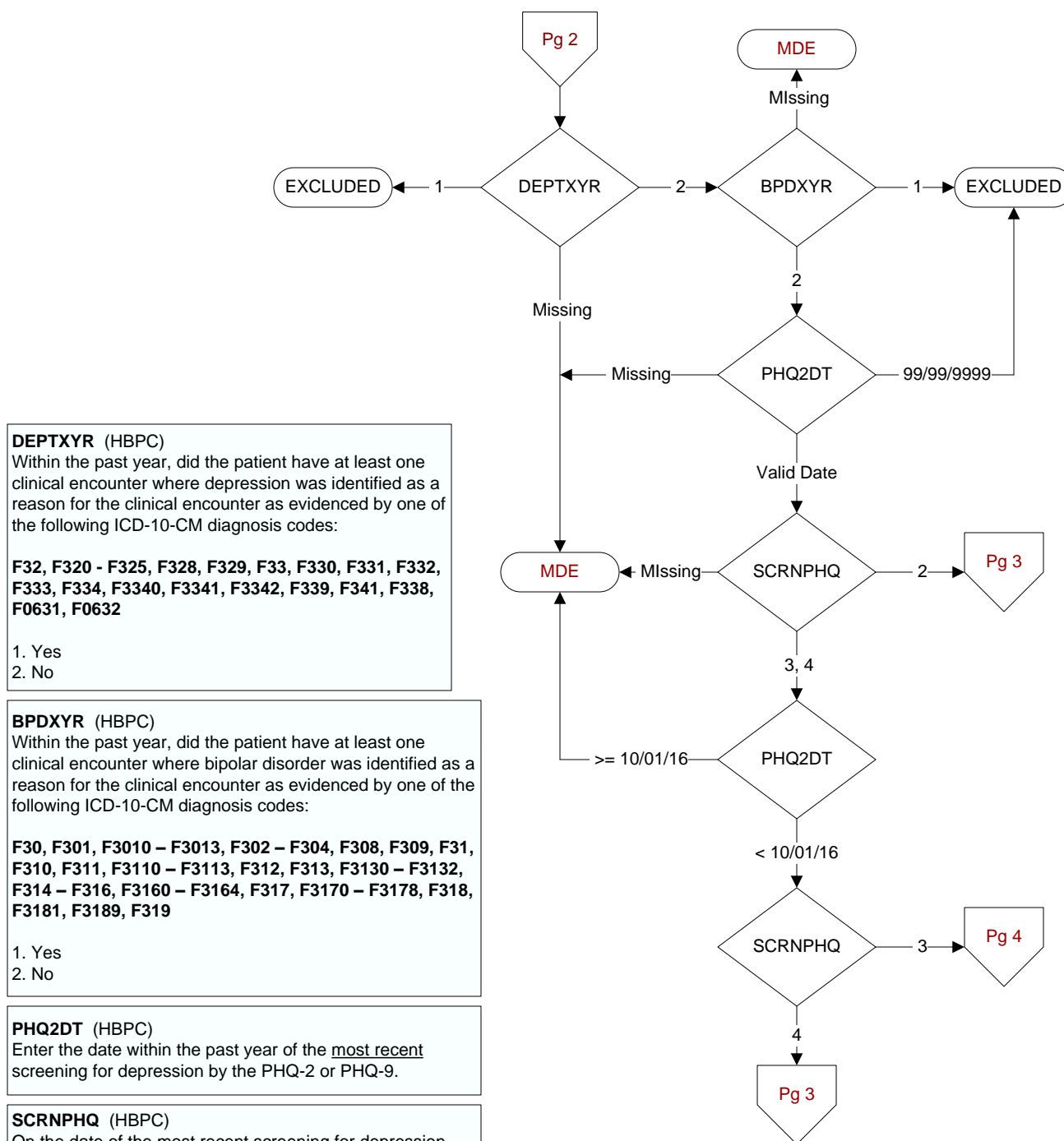
4. Score indicated mild dementia
5. Score indicated moderate to severe dementia
6. Score indicated no dementia
99. No score documented in the record or unable to determine outcome

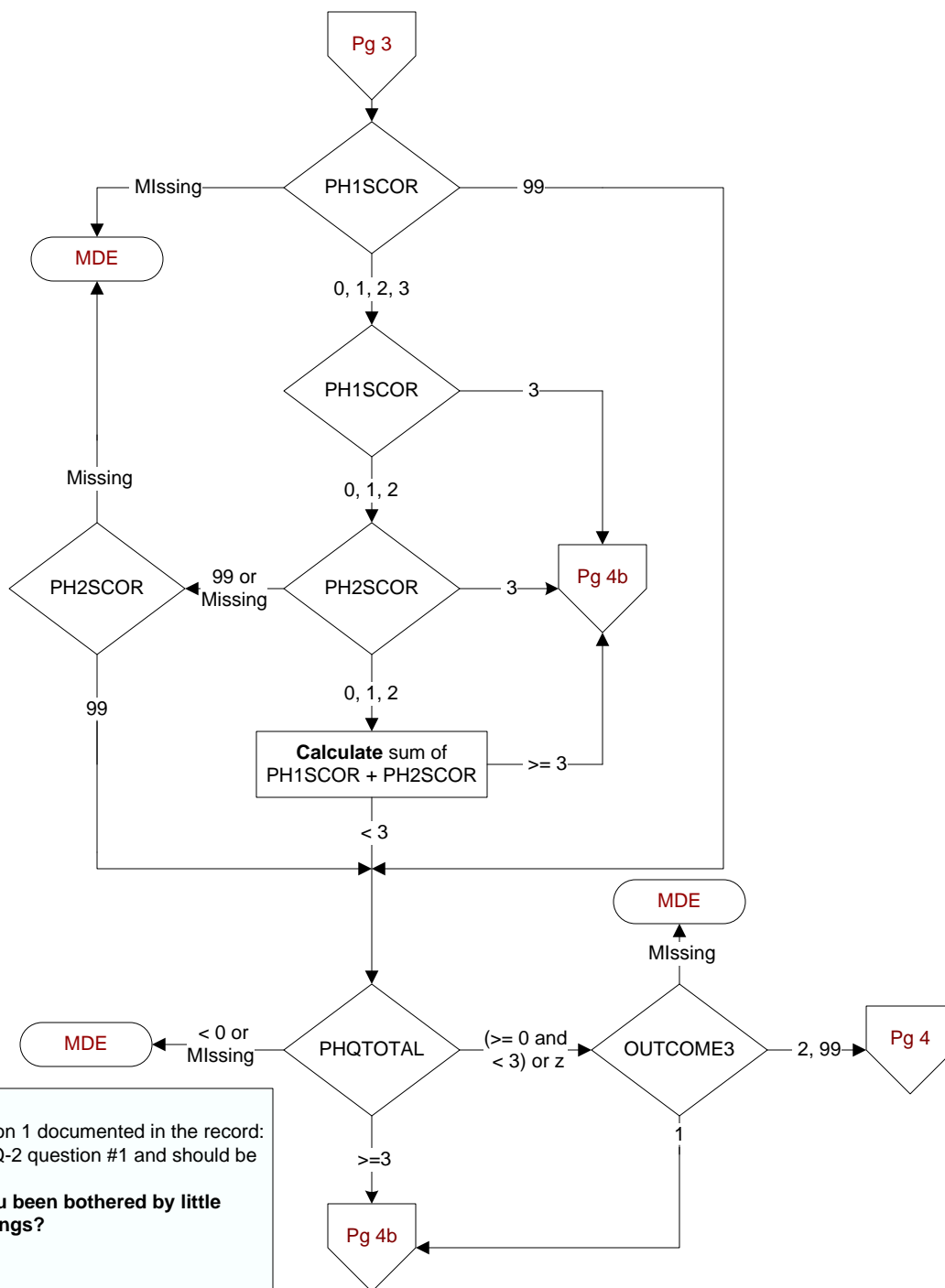
MODSEVCI (HBPC)

During the past year, did the clinician document in the record that the patient has moderate or severe cognitive impairment?

1. Yes
2. No





**PH1SCOR (HBPC)**

Enter the score for PHQ-2 Question 1 documented in the record:
(Question #1 of the PHQ-9 is PHQ-2 question #1 and should be used if available).

Over the past 2 weeks, have you been bothered by little interest or pleasure in doing things?

- 0. Not at all → 0
- 1. Several days → 1
- 2. More than half the days → 2
- 3. Nearly every day → 3
- 99. No answer documented

PH2SCOR (JBPC)

Enter the score for PHQ-2 Question 2 documented in the record:
(Question #2 of the PHQ-9 is PHQ-2 question #2 and should be used if available).

Over the past 2 weeks, have you been bothered by feeling down, depressed, or hopeless?

- 0. Not at all → 0
- 1. Several days → 1
- 2. More than half the days → 2
- 3. Nearly every day → 3
- 99. No answer documented

PHQTOTAL (HBPC)

Enter the total score for the **PHQ-2** documented in the medical record.

OUTCOME3 (HBPC)

What was the outcome of the PHQ-2 documented in the record?

- 1. Outcome positive (suggestive of depression)
- 2. Outcome negative (no indication of depression)
- 99. Outcome not documented

