

Document Links:[HBPC Instrument](#)**CATNUM**

Sample cohort
HBPC – Home Based Primary Care

REVSTAT

REVIEW STATUS (not abstracted)

- 0. Abstraction has not begun
- 1. Abstraction in progress
- 2. Abstraction completed w/o errors
- 3. TVG failure (exclusion)
- 4. Record contains missing required answers
- 5. Administrative Exclusion

HCSTATUS (HBPC)

Counting from the most recent HBPC encounter within the study interval, enter the patient's status in regard to HBPC admission:
2. HBPC admission greater than or equal to 30 days but less than or equal to 1 year
3. HBPC admission greater than one year (>365 days from the admission date)

INPTADM (HBPC)

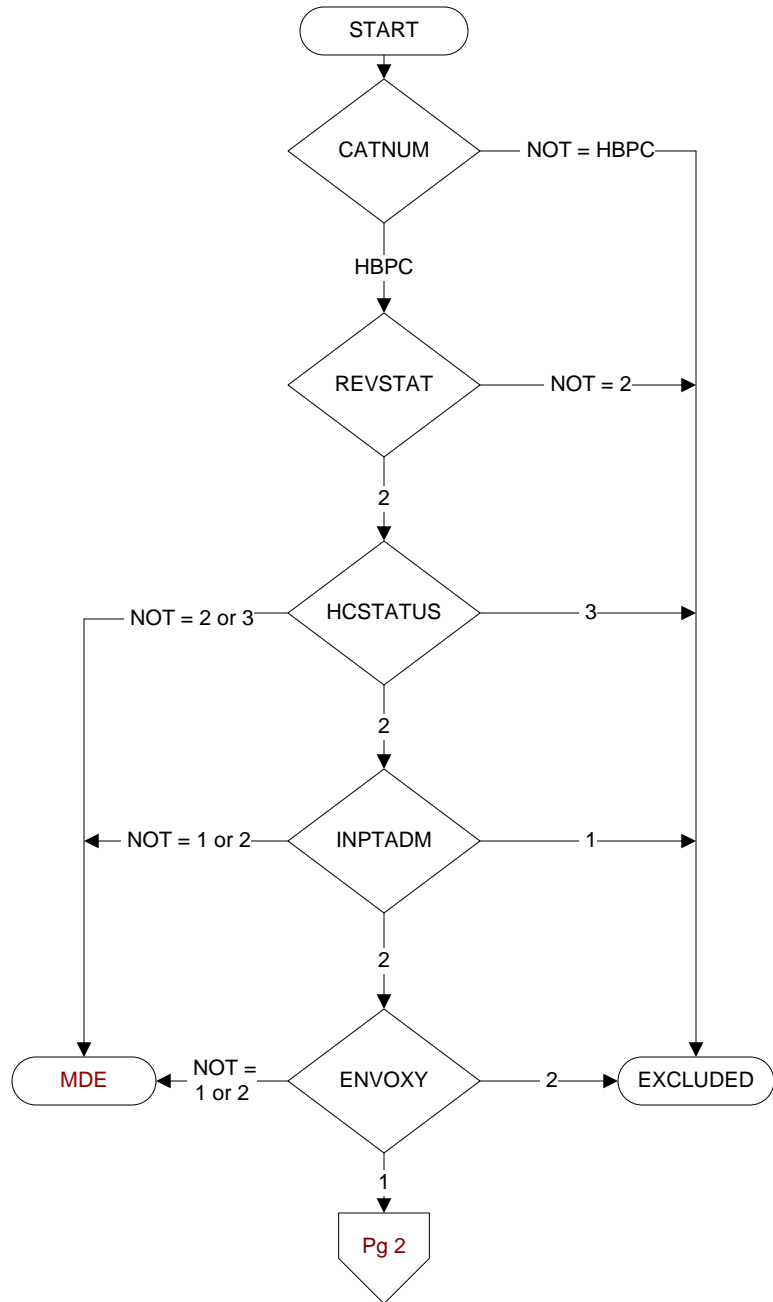
During the time frame from (computer display admisdt to admisdt + 30 days), did the record document the patient was hospitalized?

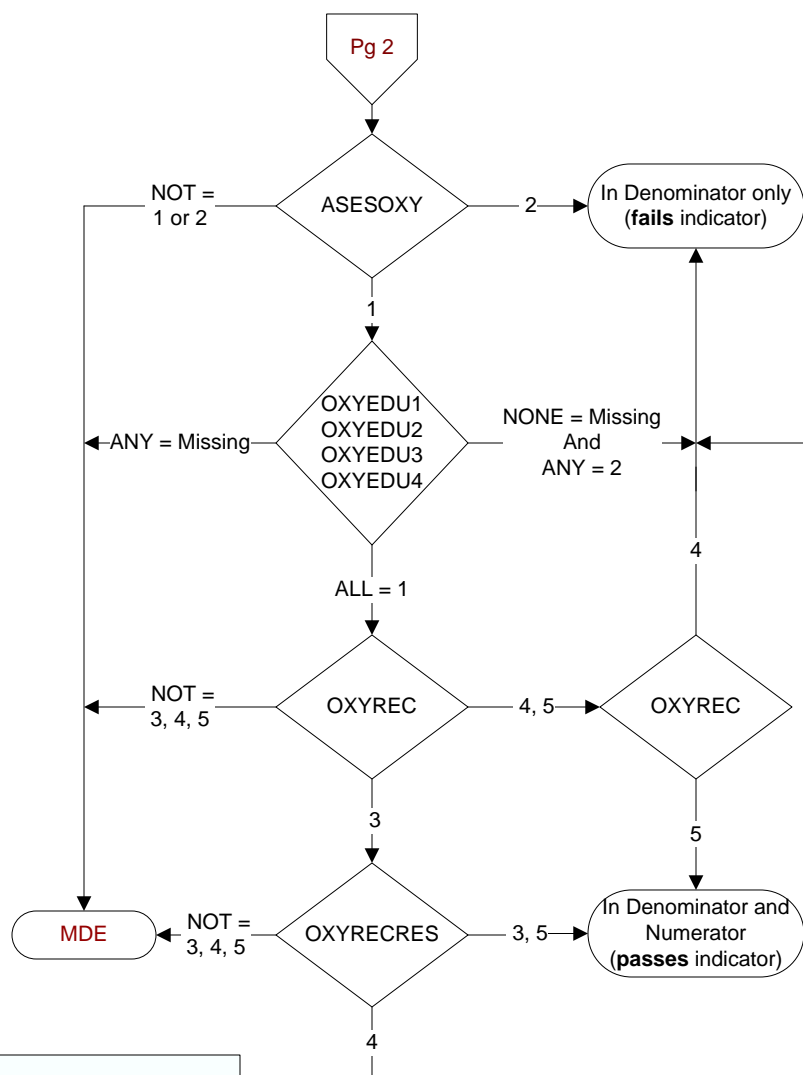
- 1. Yes
- 2. No

ENVOXY (HBPC)

Was the patient oxygen dependent?
1. Yes
2. No

**MDE = Missing or
Invalid Data Exclusion
(data error)**



**ASESOXY (HBPC)**

During the time frame from (computer to display admisdt – 30 days to admisdt + 30 days) at a face-to-face encounter, was a home oxygen safety risk assessment documented by a HBPC team member to include all of the following components?

- Whether there are smoking materials in the home,
- Whether or not the home has functioning smoke detectors, and
- Whether there are other fire safety risks in the home, such as the potential for open flames

1. Yes
2. No

OXYREC (HBPC)

Did a HBPC team member document recommendations to address identified oxygen safety risk(s)?

3. Yes
4. No
5. HBPC team member documented that NO oxygen safety risks were identified

Did the HBPC team member inform and educate the patient/ caregiver on home oxygen safety to include:

OXYEDU1. The findings of the oxygen safety risk assessment

1. Yes
2. No

OXYEDU2. The causes of fire

1. Yes
2. No

OXYEDU3. Fire risks for neighboring residences and buildings

1. Yes
2. No

OXYEDU4. Precautions that can prevent fire-related injuries

1. Yes
2. No

OXYRECRES (HBPC)

Following documentation of the home oxygen safety/risk care plan or intervention, was response to the care plan/ intervention evaluated by a HBPC team member?

3. Yes
4. No
5. No HBPC visit between home oxygen care plan/intervention and study end date