

Document Links:[Global Measures Instrument](#)[Inpt MedRecon Module](#)**REVSTAT**

REVIEW STATUS (not abstracted)

0. Abstraction has not begun
1. Abstraction in progress
2. Abstraction completed w/o errors
3. TVG failure (exclusion)
4. Record contains missing required answers
5. Administrative exclusion from all measures

CATNUM

Sample Cohort (rcvd on pull list)

70. Global Measures

REVPTMED1-6 (IP MedRec)

Upon admission or during the 24 hours after admission, is there evidence in the medical record that a member of the health care team reviewed the patient's list of medications and/or a medication list for review to include all of the following components with the patient/caregiver?

Medication List Component**REVPTMED1.** Local Active VA Prescriptions

1. Yes
2. No

REVPTMED2. Remote Active VA Prescriptions

1. Yes
2. No

REVPTMED3. Non-VA Medications

1. Yes
2. No

REVPTMED4. Recently Expired VA Prescriptions (range 90 – 180 days)

1. Yes
2. No

REVPTMED5. Recently Discontinued VA Prescriptions (range 90 – 180 days)

1. Yes
2. No

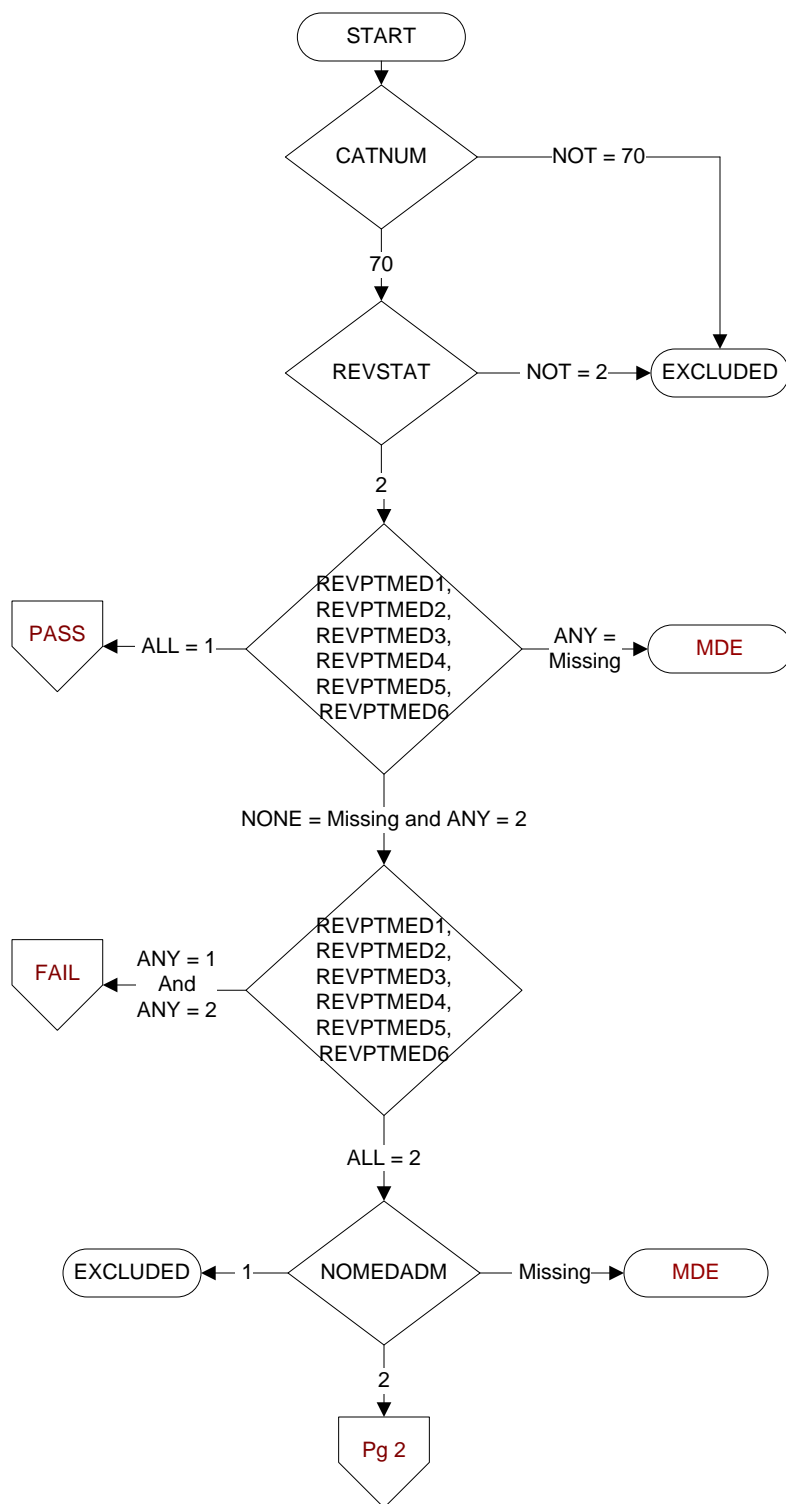
REVPTMED6. Pending Medication Orders where relevant (e.g., patient is seen by multiple providers in the same day)

1. Yes
2. No

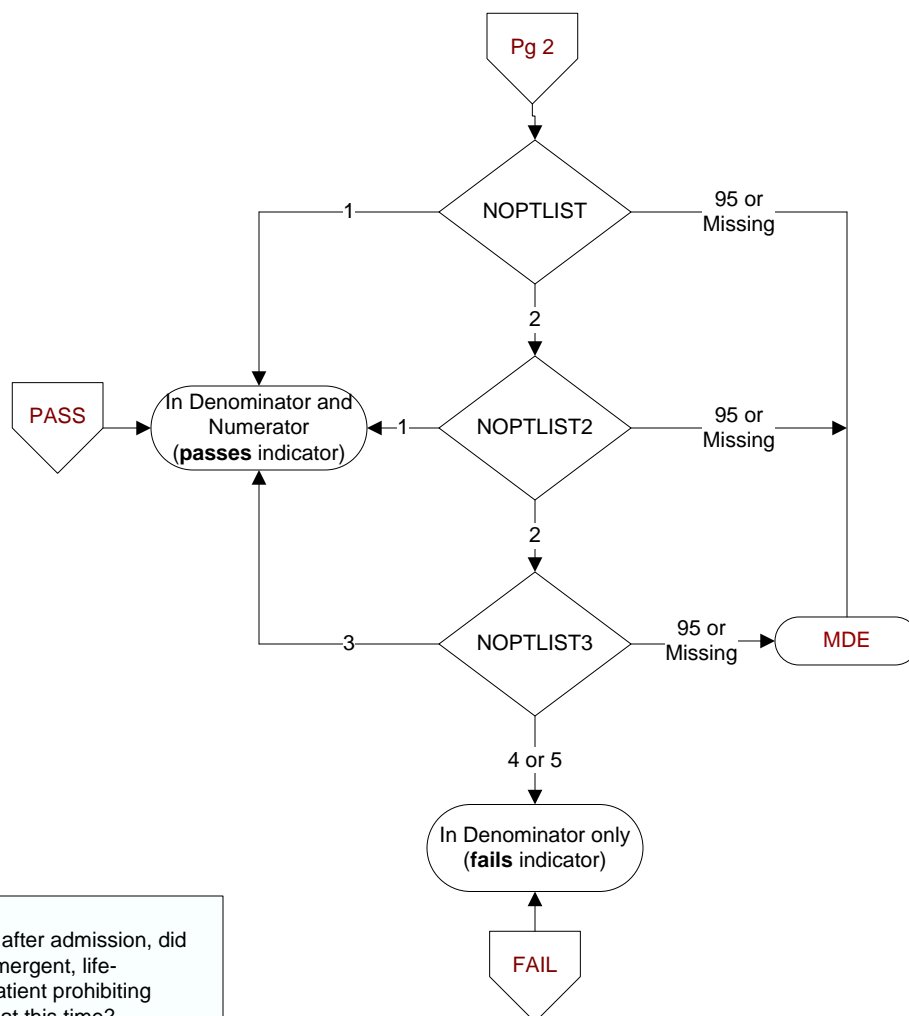
NOMEDADM (IP MedRec)

Upon admission or during the 24 hours after admission, did a member of the health care team document the patient was not taking any medications upon admission?

1. Yes
2. No



**MDE = Missing or
Invalid Data Exclusion
(data error)**

**NOPTLIST** (IP MedRec)

Upon admission or during the 24 hours after admission, did the medical record document that an emergent, life-threatening situation existed with this patient prohibiting completion of medication reconciliation at this time?

1. Yes
2. No

NOPTLIST2 (IP MedRec)

Upon admission or during the 24 hours after admission, did a member of the health care team document that the patient and/or caregiver were unable to confirm the patient's medications?

1. Yes
2. No

NOPTLIST3 (IP MedRec)

Upon admission or during the 24 hours after admission, did a member of the health care team document at least two attempts to obtain the patient's medication list from a referring facility?

3. Yes
4. No
5. Patient was not referred from another facility