

### Document Links:

[Hospital Outpatient Instrument](#)

### REVSTAT

REVIEW STATUS (not abstracted)

- 0. Abstraction has not begun
- 1. Abstraction in progress
- 2. Abstraction completed w/o errors
- 3. TVG failure (exclusion)
- 4. Record contains missing required answers
- 5. Administrative exclusion from all measures

### CATNUM (rcvd on pull list)

Sample category number

- 72 = HOP – AMI
- 73 = HOP – Chest Pain
- 74 = HOP – ED
- 75 = HOP – Pain Management
- 76 = HOP - Stroke

### EMCODE (HOP)

Enter the E/M code documented for this outpatient encounter.

### BIRTHDT (rcvd on pull list)

Patients date of birth.

### ARRVDATE (HOP)

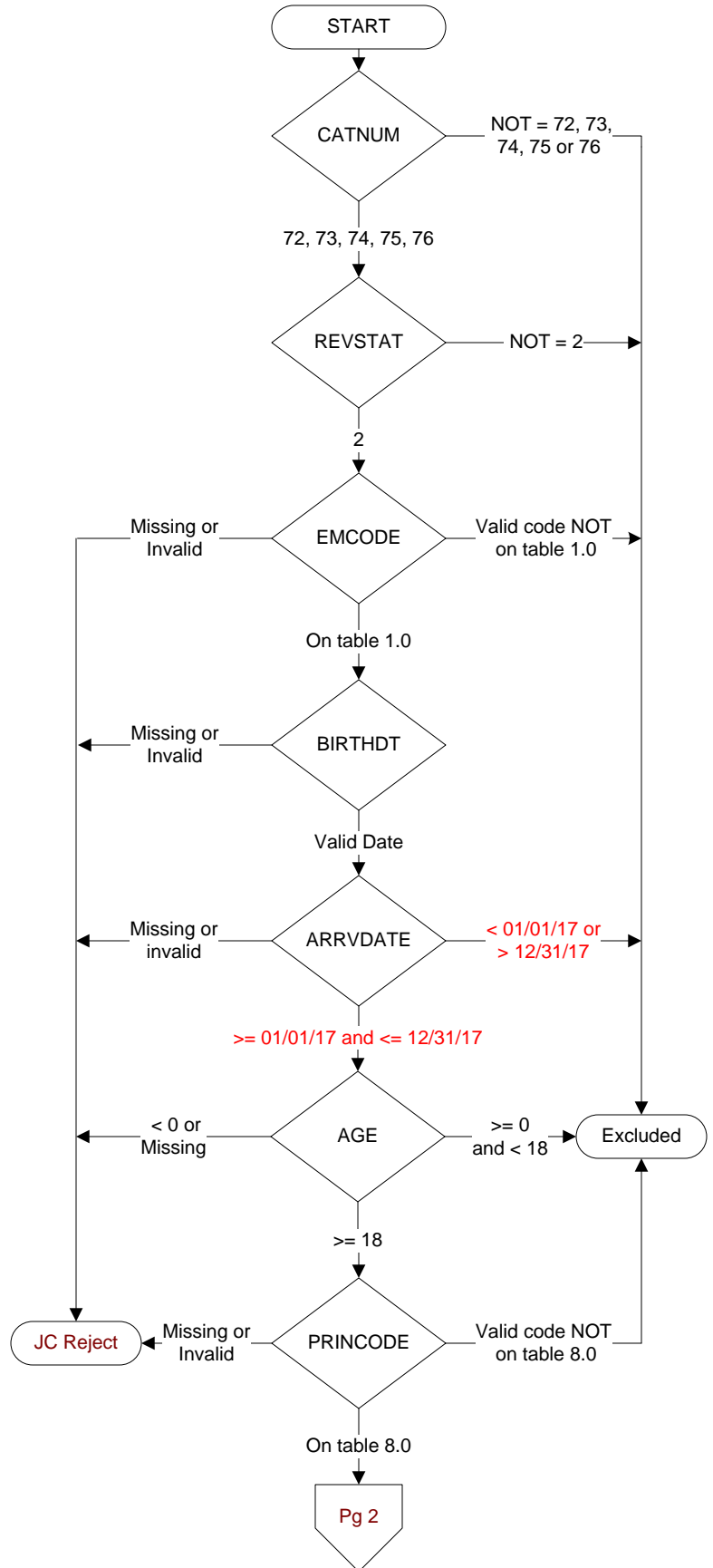
Enter the **earliest** documented date the patient arrived in the hospital outpatient setting at this VAMC.

### AGE

calculated field: ARRVDATE - BIRTHDT

### PRINCODE (HOP)

Enter the ICD-10-CM principal diagnosis code.



**DCCODE (HOP)**

What was the patient's discharge disposition from the outpatient setting?

1. Home
  - Assisted Living Facilities (ALFs) – includes assisted living care at nursing home/facility
  - Court/Law Enforcement – includes detention facilities, jails, and prison
  - Home – includes board and care, domiciliary, foster or residential care, group or personal care homes, retirement communities, and homeless shelters
  - Home with Home Health Services
  - Outpatient Services including outpatient procedures at another hospital, outpatient Chemical Dependency Programs and Partial Hospitalization
2. Hospice – Home (or other home setting as listed in #1 above)
3. Hospice – Health Care Facility
  - General Inpatient and Respite, Residential and Skilled Facilities, and Other Health Care Facilities
- 4a. Non-VA Acute Care Facility – General Inpatient Care
- 4b. Acute Care Facility – Critical Access Hospital
- 4c. Acute Care Facility - Cancer or Children's Hospitals
- 4d. Acute Care Facility - Department of Defense or Veteran's Administration Hospitals
5. Other Health Care Facility
  - Extended or Immediate Care Facility (ECF/ICF)
  - Long Term Acute Care Hospital (LTACH)
  - Nursing Home or Facility including Veteran's Administration Nursing Facility
  - Psychiatric Hospital or Psychiatric Unit of a Hospital
  - Rehabilitation Facility including Inpatient Rehabilitation Facility/Hospital or Rehabilitation Unit of a Hospital
  - Skilled Nursing Facility (SNF), Sub-Acute Care or Swing Bed
  - Transitional Care Unit (TCU)
  - Veteran's Home
6. Expired
7. Left Against Medical Advice/AMA
99. Not documented or unable to determine

**CTMRIORD (HOP)**

Was a computerized tomography (CT) or Magnetic Resonance Imaging (MRI) scan of the head ordered by the physician/APN/PA during the emergency department visit?

1. Yes
2. No

**LASTWELL (HOP)**

Is there documentation that the date and time of last known well was witnessed or reported?

1. Yes
2. No

**LASTWELLDT (HOP)**

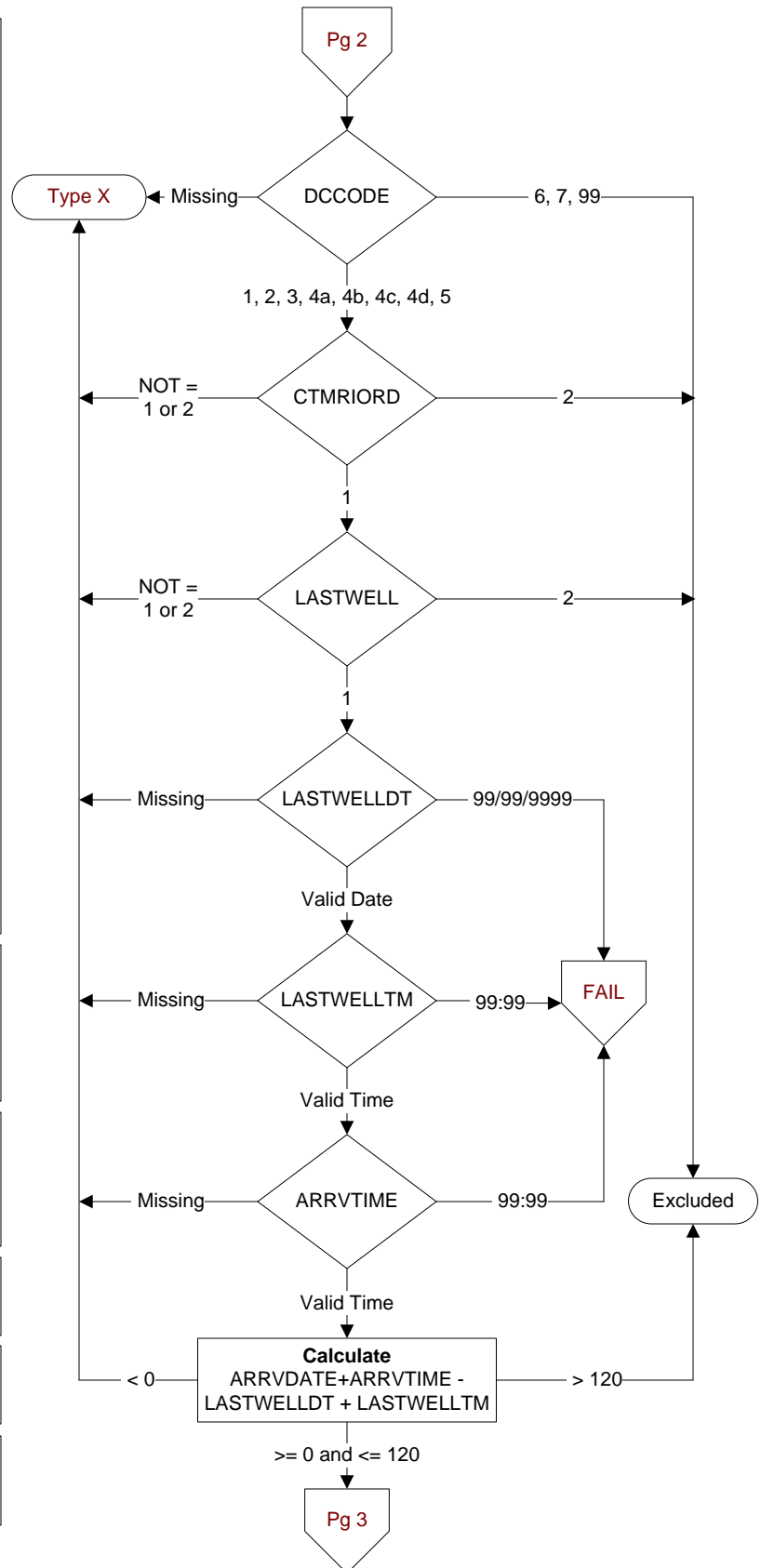
Enter the date the patient was last known to be well.

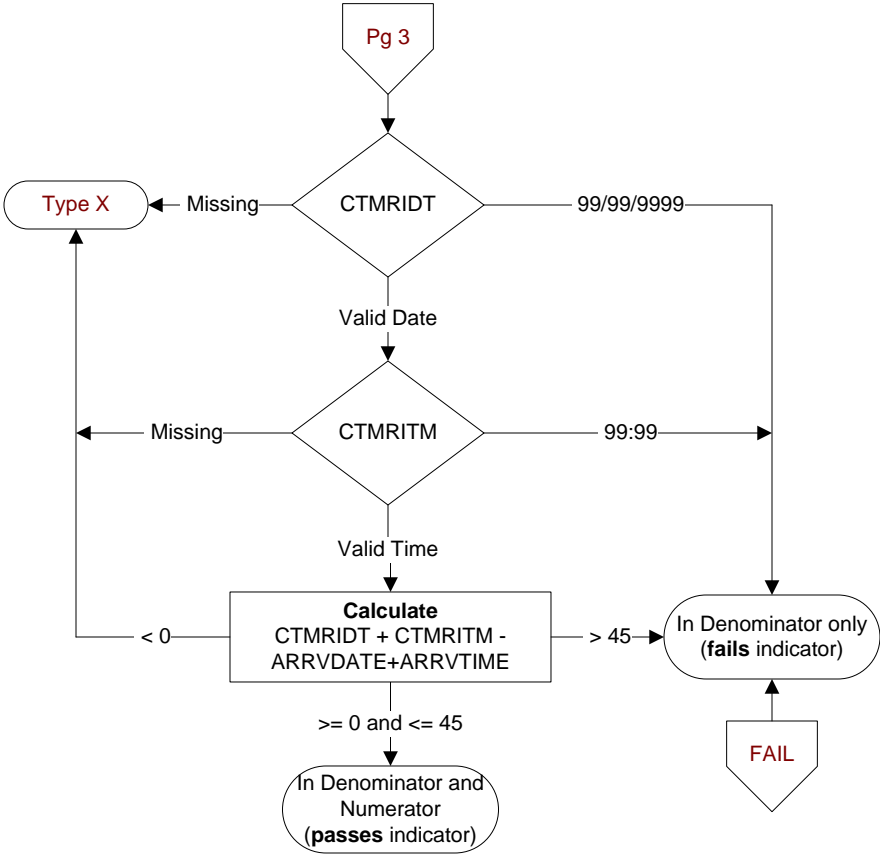
**LASTWELLTM (HOP)**

Enter the time the patient was last known to be well.

**ARRVTIME (HOP)**

Enter the **earliest** documented time the patient arrived at the outpatient or emergency department at this VAMC.





**CTMRIDT** (HOP)  
Enter the date the earliest Head CT or MRI Scan interpretation was completed/reported.

**CTMRITM** (HOP)  
Enter the time the earliest Head CT or MRI Scan interpretation was completed/reported.