

Document Links:[HBPC Instrument](#)**CATNUM**

Sample cohort
HBPC – Home Based Primary Care

REVSTAT

REVIEW STATUS (not abstracted)

0. Abstraction has not begun
1. Abstraction in progress
2. Abstraction completed w/o errors
3. TVG failure (exclusion)
4. Record contains missing required answers
5. Administrative Exclusion

DOCHOSPCE (HBPC)

Is one of the following documented in the medical record?

- The patient is enrolled in a VHA or community-based Hospice program
 - The patient has a diagnosis of cancer of the liver, pancreas, or esophagus
 - On the problem list it is documented the patient's life expectancy is less than 6 months?
1. Yes
 2. No

DEMENTDX2 (HBPC)

During the past year, does the record document a diagnosis of dementia/neurocognitive disorder as evidenced by one of the following ICD-10-CM diagnosis codes:

A8100, A8101, A8109, A812, A8189, A819, Primary I60xx – I69xx + Secondary F0150 or F0151, F0390, F0391, any Primary xxx.xx + Secondary F0280 or F0281, F0390, F0391, F1027, F1997, G231, G300, G301, G308, G309, G3101, G3109, G3183, G903

1. Yes
2. No

DEMSEV (HBPC)

Was the severity of dementia assessed during the past year using one of the following standardized tools?

1. Clinical Dementia Rating Scale (CDR)
2. Functional Assessment Staging Tool (FAST)
3. Global Deterioration Scale (GDS)
99. Severity of dementia was not assessed during the past year using one of the specified tools

COGSCOR2 (HBPC)

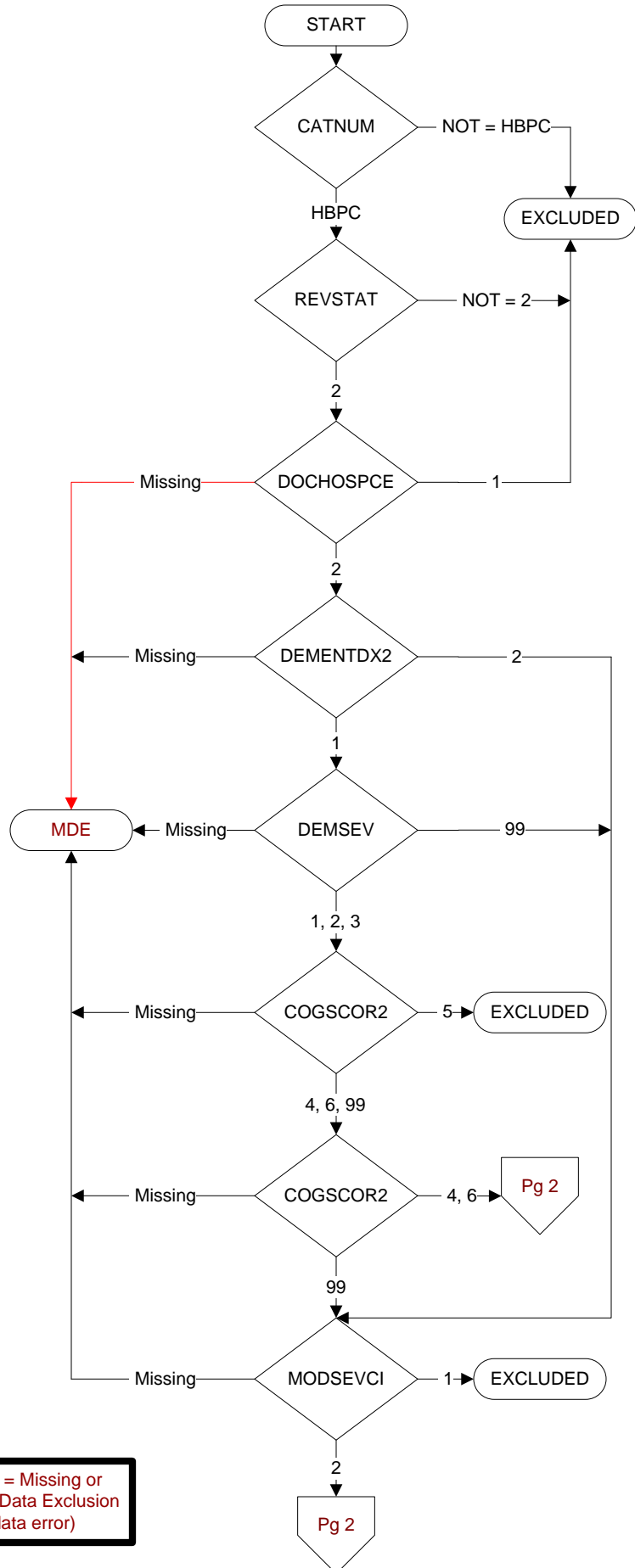
What was the outcome of the assessment of the severity of dementia assessment?

4. Score indicated mild dementia
5. Score indicated moderate to severe dementia
6. Score indicated no dementia
99. No score documented in the record or unable to determine outcome

MODSEVCI (HBPC)

During the past year, did the clinician document in the record that the patient has moderate or severe cognitive impairment?

1. Yes
2. No



PTSDX (HBPC)

Within the past year, did the patient have at least one clinical encounter where PTSD was identified as a reason for the clinical encounter as evidenced by one of the following ICD-10-CM diagnosis codes:

F431, F4310 - F4312

1. Yes
2. No

PTSRNPC (HBPC)

Within the past five years, was the patient screened for PTSD using the Primary Care PTSD Screen (PC-PTSD)?

1. Yes
2. No

PCPTSDT (HBPC)

Enter the date of the most recent screen for PTSD using the PC-PTSD.

STDYBEG

(Rcvd on Pull List)
Study Interval begin date

PCPTSD (HBPC)

Enter the patient's answers to each of the Primary Care PTSD Screen questions:

Have you ever had any experience that was so frightening, horrible, or upsetting that, **IN THE PAST MONTH**, you:

1. Have had any nightmares about it or thought about it when you did not want to?
2. Tried hard not to think about it or went out of your way to avoid situations that remind you of it?
3. Were constantly on guard, watchful, or easily startled?
4. Felt numb or detached from others, activities, or your surroundings?

1. Yes
2. No
99. No answer documented

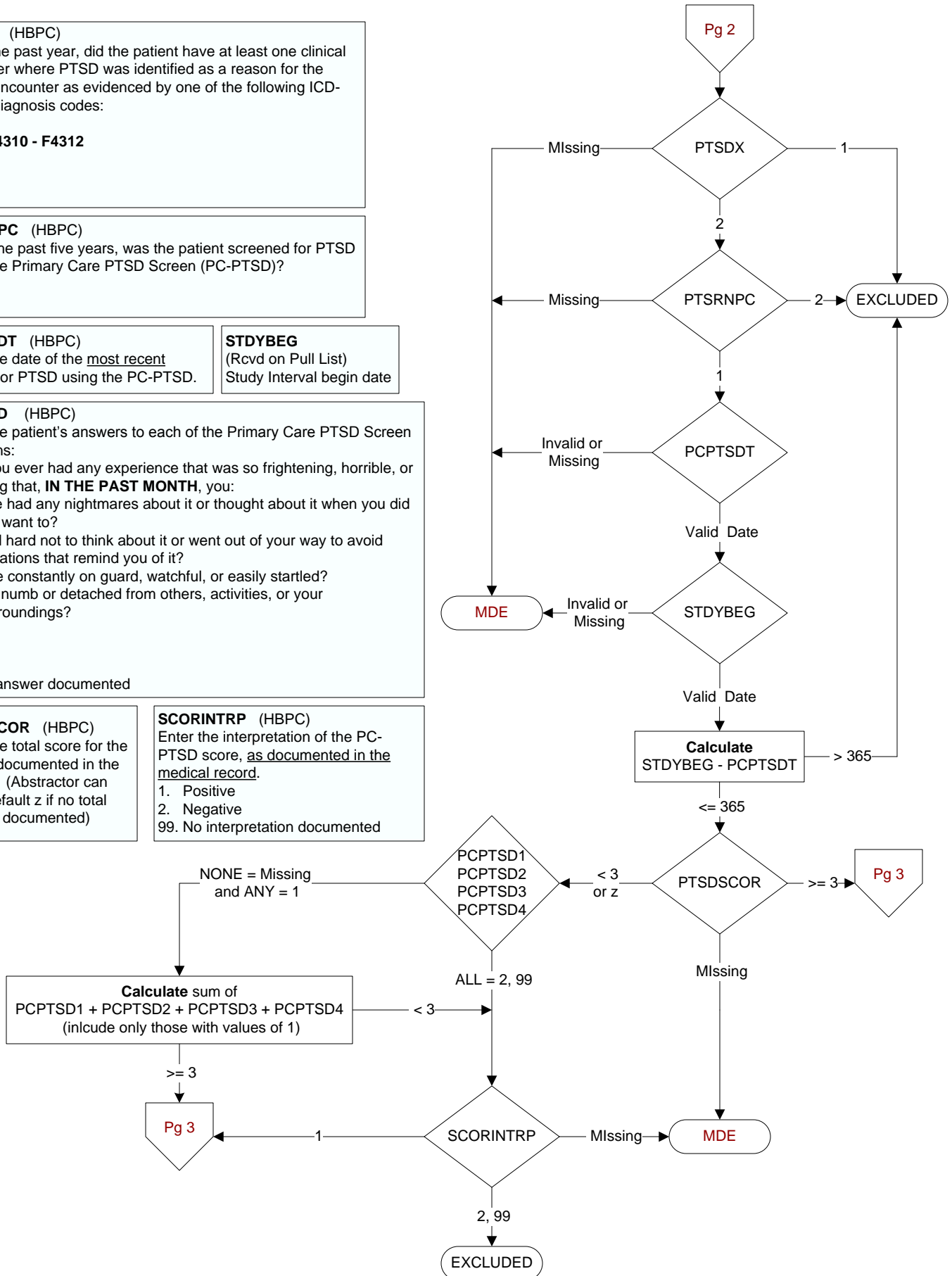
PTSDSCOR (HBPC)

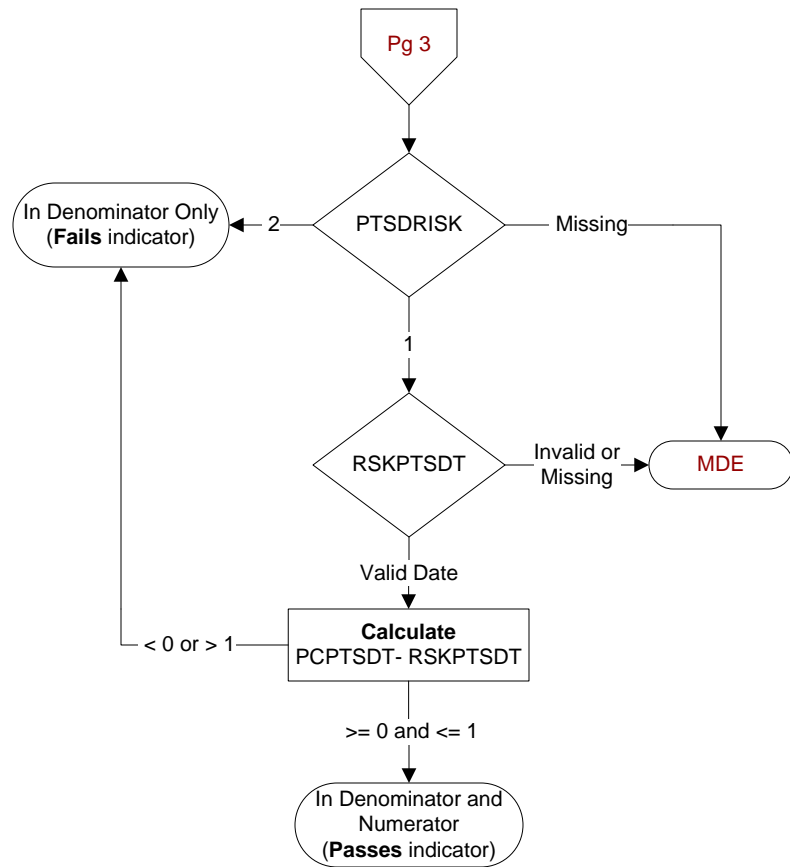
Enter the total score for the screen documented in the record. (Abstractor can enter default z if no total score is documented)

SCORINTRP (HBPC)

Enter the interpretation of the PC-PTSD score, as documented in the medical record.

1. Positive
2. Negative
99. No interpretation documented



**PTSDRISK**

On the day of or the day after the positive PC-PTSD screen, did the provider document a suicide ideation/behavior evaluation?

1. Yes
2. No

RSKPTSDT

Enter the date the suicide ideation/behavior evaluation was completed.