

**Document Links:**[CGPI Validation Module](#)[CGPI PI Module](#)[CGPI Shared Module](#)**CATNUM**

Sample category  
 16. AMI - Outpatient visit  
 36. SCI Dx  
 48. Female, age 20-69  
 50. Random Sample  
 51. Random Sample MH  
 54. Frail/Elderly  
 60. DM Outpatient  
 61. Inpatient SC  
 68. Contract CBOC

**FEFLAG** (rcvd on pull list)

FE case flagged for CGPI review / scoring?  
 0. No  
 1. Yes

**OTHCARE** (Validation)

Is there evidence in the medical record that within the past two years, the patient refused VHA Primary Care and is receiving ONLY his/her primary care in a non-VHA setting?  
 1. yes  
 2. no

**REVSTAT**

REVIEW STATUS (not abstracted)  
 0. Abstraction has not begun  
 1. Abstraction in progress  
 2. Abstraction completed w/o errors  
 3. TVG failure (exclusion)  
 4. Record contains missing required answers  
 5. Administrative exclusion from all measures

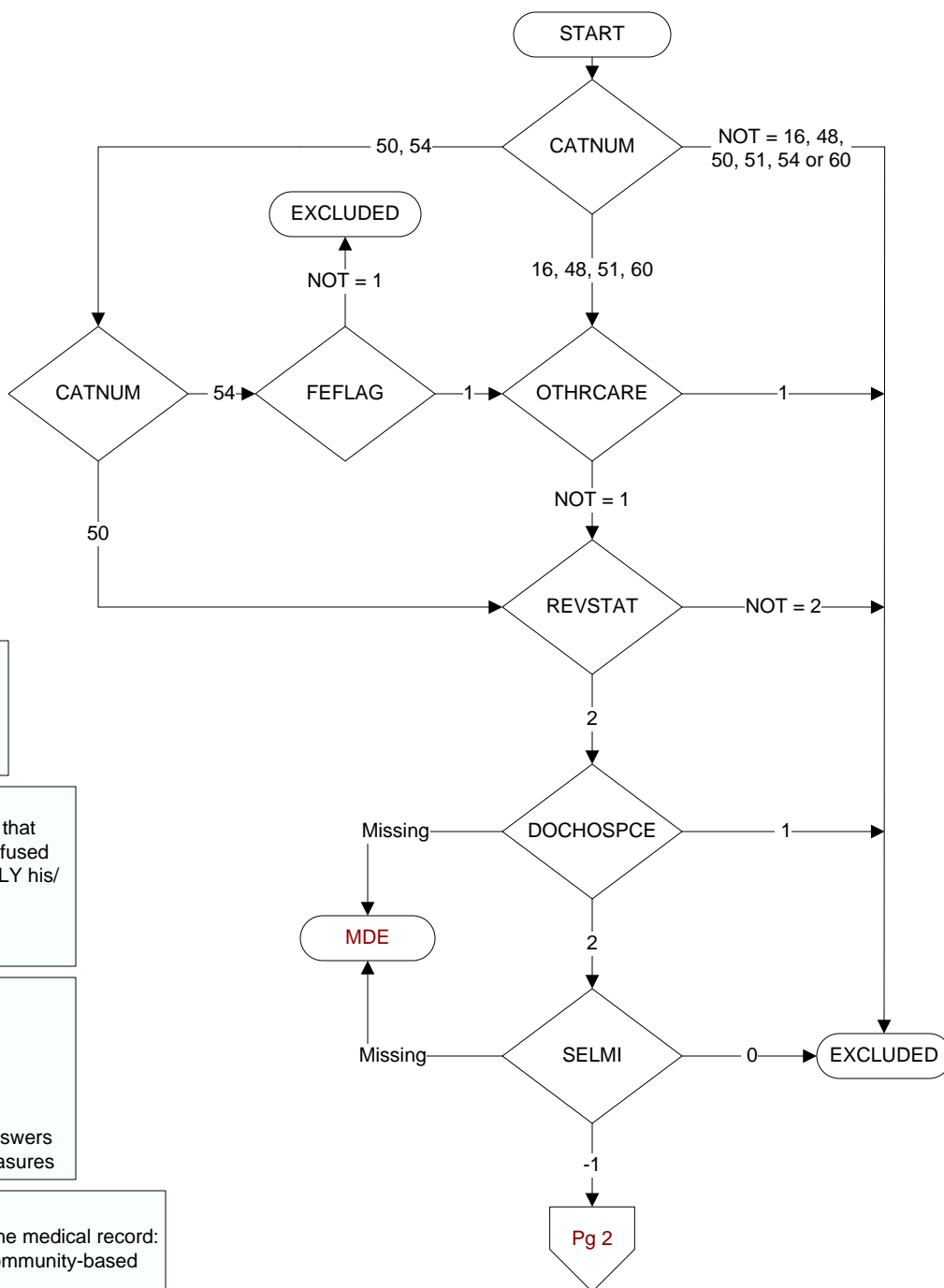
**DOCHOSPCE** (PI module)

Is one of the following documented in the medical record:  
 - the patient is enrolled in a VHA or community-based Hospice program  
 - the patient has a diagnosis of cancer of the liver, pancreas, or esophagus  
 - on the problem list it is documented the patient's life expectancy is less than 6 months?

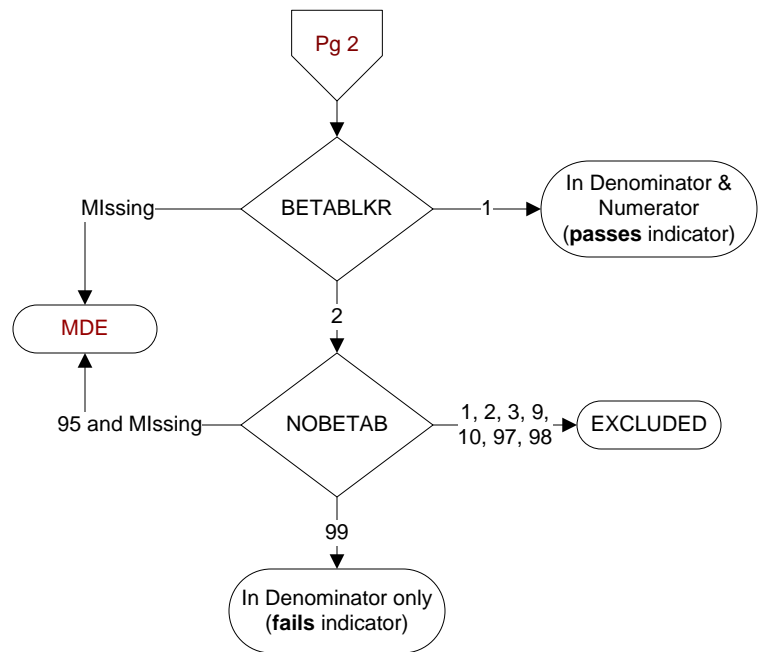
Did the patient have one or more of the following active diagnoses? (Validation)

**SELM1** = Old Myocardial Infarction

-1 = Yes  
 0 = No



**MDE = Missing or Invalid Data Exclusion (data error)**

**BETABLR** (Shared)

At the most recent outpatient visit, was a beta-blocker included in the patient's current medications?

**Examples of beta-blockers include, but are not limited to:**

- metoprolol succinate or tartrate
- carvedilol
- atenolol
- nadolol
- propranolol
- combination of beta-blockers with other drugs

1. Yes
2. No

**NOBETAB** (Shared)

Does the record document any of the following reasons for not prescribing a beta-blocker?

1. Beta-blocker allergy
2. Bradycardia (heart rate less than 60 bpm) while not on a beta blocker
3. Second or third degree heart block on ECG and does not have a pacemaker
9. Post-heart transplant patient
10. Documentation of severely decompensated heart failure
95. Not applicable
97. Other reasons documented by a physician/APN/ PA or pharmacist for not prescribing a beta- blocker
98. Patient refusal of beta-blockers documented by physician/APN/PA or pharmacist
99. No documented reason