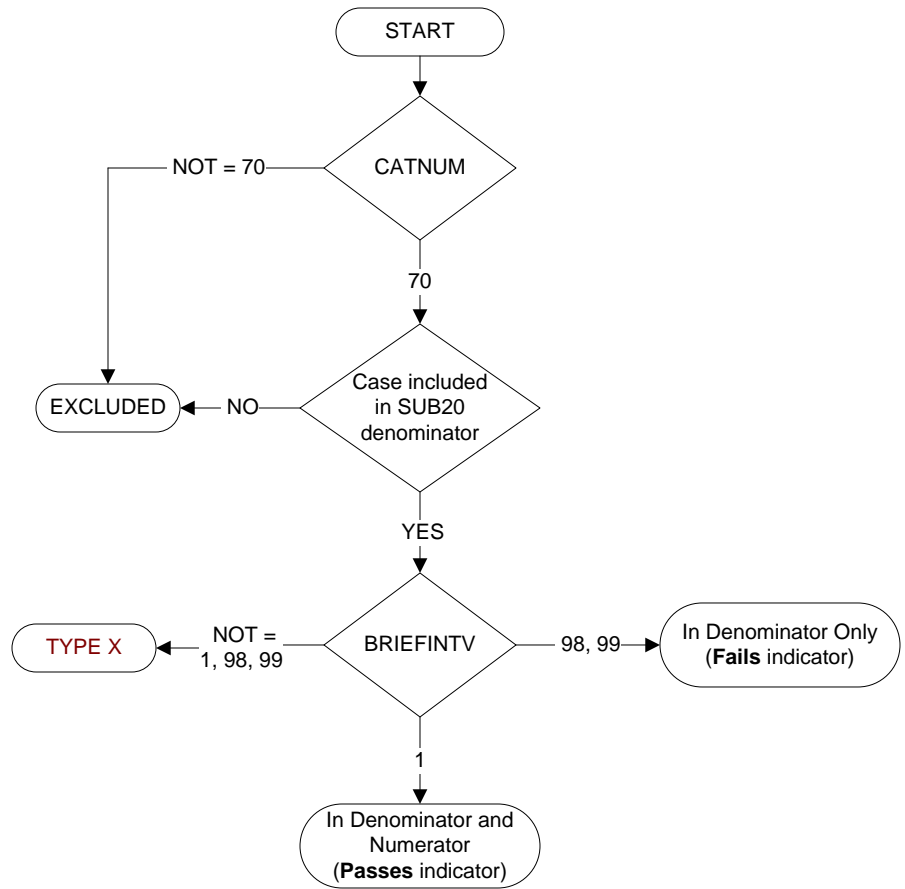


**Document Links:**[Global Measures Instrument](#)

**CATNUM** (rcvd on pull list)  
 Sample category number  
 70 = Global Measures

**BRIEFINTV** (Global Measures)

Following the positive screening result for alcohol use, did the patient receive a brief intervention prior to discharge?

1. The patient received a brief intervention including all of the following components
  - a. Concern that the patient is drinking at unhealthy levels known to increase his/her risk of alcohol-related health problems
  - b. Feedback linking alcohol use and health, including:
    - Personalized feedback (i.e., explaining how alcohol use can interact with patient's medical concerns [hypertension, depression/anxiety, insomnia, injury, congestive heart failure (CHF), diabetes mellitus (DM), breast cancer risk, interactions with medications])
    - OR**
    - General feedback on health risks associated with drinking.
  - c. Advice to abstain (if there are contraindications to drinking)
- OR**
- Advice to drink below recommended limits (specified for patient).
98. Patient refused/declined brief intervention
99. Brief intervention was not offered to the patient during the hospital stay or unable to determine if a brief intervention was provided from medical record documentation