

Document Links:[CGPI PI Module](#)**CATNUM**

Sample category

16. AMI - Outpatient visit
 36. SCI Dx
 48. Female, age 20-69
 50. Random Sample
 51. Random Sample MH
 54. Frail/Elderly
 60. DM Outpatient
 61. Inpatient SC
 68. Contract CBOC

FEFLAG (rcvd on pull list)

FE case flagged for CGPI review / scoring?

0. No
 1. Yes

REVSTAT

REVIEW STATUS (not abstracted)

0. Abstraction has not begun
 1. Abstraction in progress
 2. Abstraction completed w/o errors
 3. TVG failure (exclusion)
 4. Record contains missing required answers
 5. Administrative exclusion from all measures

DOCHOSPCE (PI module)Is one of the following documented in the medical record:

- the patient is enrolled in a VHA or community-based Hospice program
- the patient has a diagnosis of cancer of the liver, pancreas, or esophagus
- on the problem list it is documented the patient's life expectancy is less than 6 months?

TOBNOW (PI Module)At the most recent screening, did the patient report he/she is a current tobacco user?

1. Reported he/she is a current tobacco user
 2. Reported he/she is not a current tobacco user
 95. Not applicable

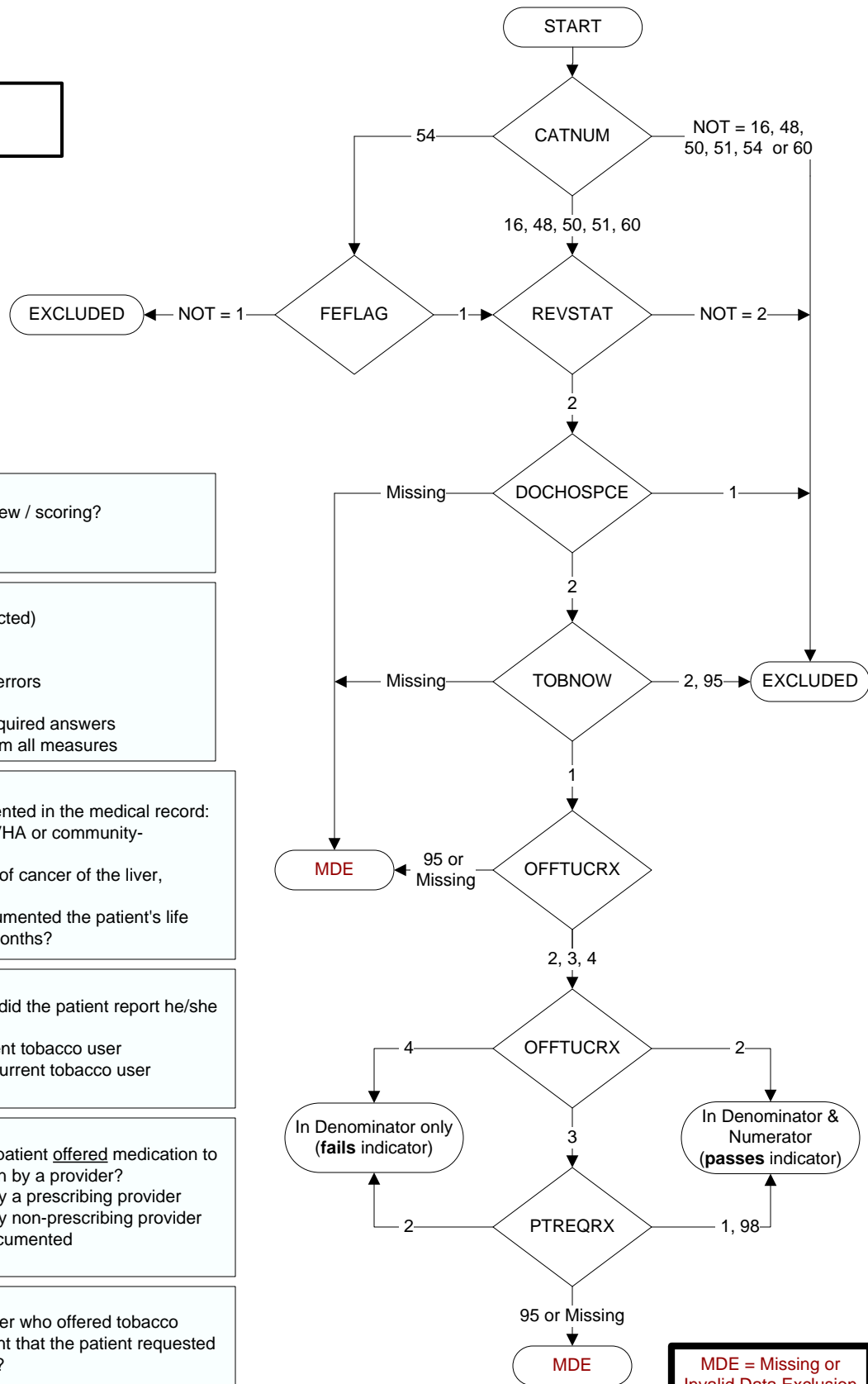
OFFTUCRX (PI Module)Within the past year, was the patient offered medication to assist in tobacco use cessation by a provider?

2. Yes, medication offered by a prescribing provider
 3. Yes, medication offered by non-prescribing provider
 4. No offer of medication documented
 95. Not applicable

PTREQRX (PI Module)

Did the non-prescribing provider who offered tobacco cessation medication document that the patient requested tobacco cessation medication?

1. Yes
 2. No
 95. Not applicable
 98. Patient refused tobacco cessation medication



**MDE = Missing or
 Invalid Data Exclusion
 (data error)**