

**Document Links:**[HBPC Instrument](#)**CATNUM**

Sample cohort  
HBPC – Home Based Primary Care

**REVSTAT**

REVIEW STATUS (not abstracted)

- 0. Abstraction has not begun
- 1. Abstraction in progress
- 2. Abstraction completed w/o errors
- 3. TVG failure (exclusion)
- 4. Record contains missing required answers
- 5. Administrative Exclusion

**HCSTATUS** (HBPC)

Counting from the most recent HBPC encounter within the study interval, enter the patient's status in regard to HBPC admission:

- 2. HBPC admission greater than or equal to 30 days but less than or equal to 1 year
- 3. HBPC admission greater than one year (>365 days from the admission date)

**INPTADM** (HBPC)

During the time frame from (computer display admisdt to admisdt + 30 days), did the record document the patient was hospitalized?

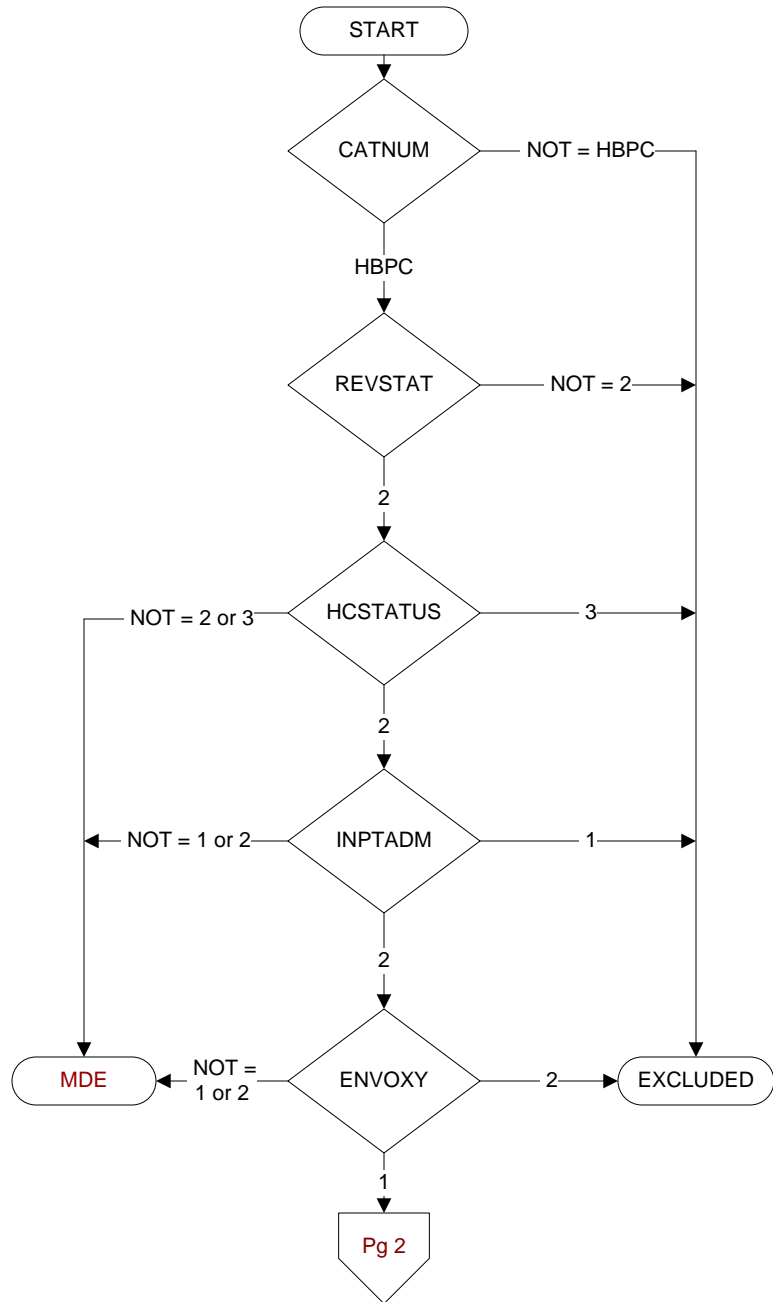
- 1. Yes
- 2. No

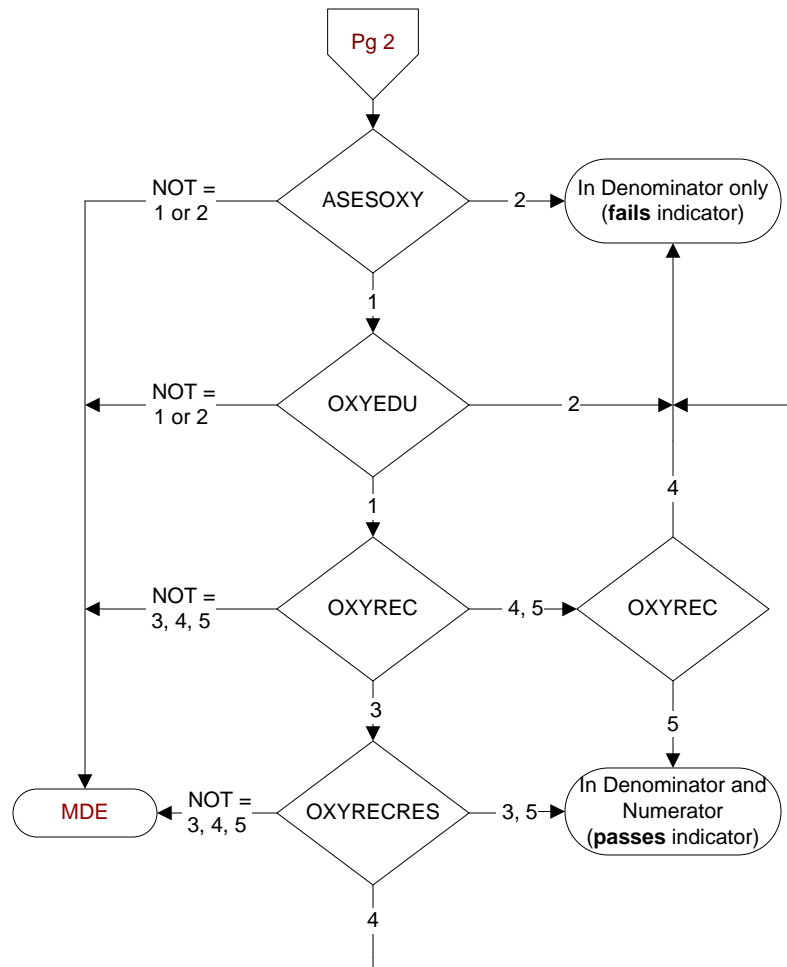
**ENVOXY** (HBPC)

Was the patient oxygen dependent?

- 1. Yes
- 2. No

**MDE = Missing or  
Invalid Data Exclusion  
(data error)**



**ASESOXY (HBPC)**

During the time frame from (computer to display admisdt – 30 days to admisdt + 30 days) at a face-to-face encounter, was a home oxygen safety risk assessment documented by a HBPC team member to include all of the following components?

- Whether there are smoking materials in the home,
- Whether or not the home has functioning smoke detectors, and
- Whether there are other fire safety risks in the home, such as the potential for open flames

1. Yes
2. No

**OXYEDU (HBPC)**

Did the HBPC team member inform and educate the patient/caregiver about all of the following?

- The findings of the oxygen safety risk assessment,
- The causes of fire,
- Fire risks for neighboring residences and buildings, and
- Precautions that can prevent fire-related injuries

1. Yes
2. No

**OXYREC (HBPC)**

Did a HBPC team member document recommendations to address identified oxygen safety risk(s)?

3. Yes
4. No
5. HBPC team member documented that NO oxygen safety risks were identified

**OXYRECRES (HBPC)**

Following documentation of the home oxygen safety/risk care plan or intervention, was response to the care plan/ intervention evaluated by a HBPC team member?

3. Yes
4. No
5. No HBPC visit between home oxygen care plan/ intervention and study end date