

Document Links:[HBPC Instrument](#)**CATNUM**

Sample cohort

HBPC – Home Based Primary Care

REVSTAT

REVIEW STATUS (not abstracted)

- 0. Abstraction has not begun
- 1. Abstraction in progress
- 2. Abstraction completed w/o errors
- 3. TVG failure (exclusion)
- 4. Record contains missing required answers
- 5. Administrative Exclusion

HCSTATUS (HBPC)

Counting from the most recent HBPC encounter within the study interval, enter the patient's status in regard to HBPC admission:

- 2. HBPC admission greater than or equal to 30 days but less than or equal to 1 year
- 3. HBPC admission greater than one year (>365 days from the admission date)

INPTADM (HBPC)

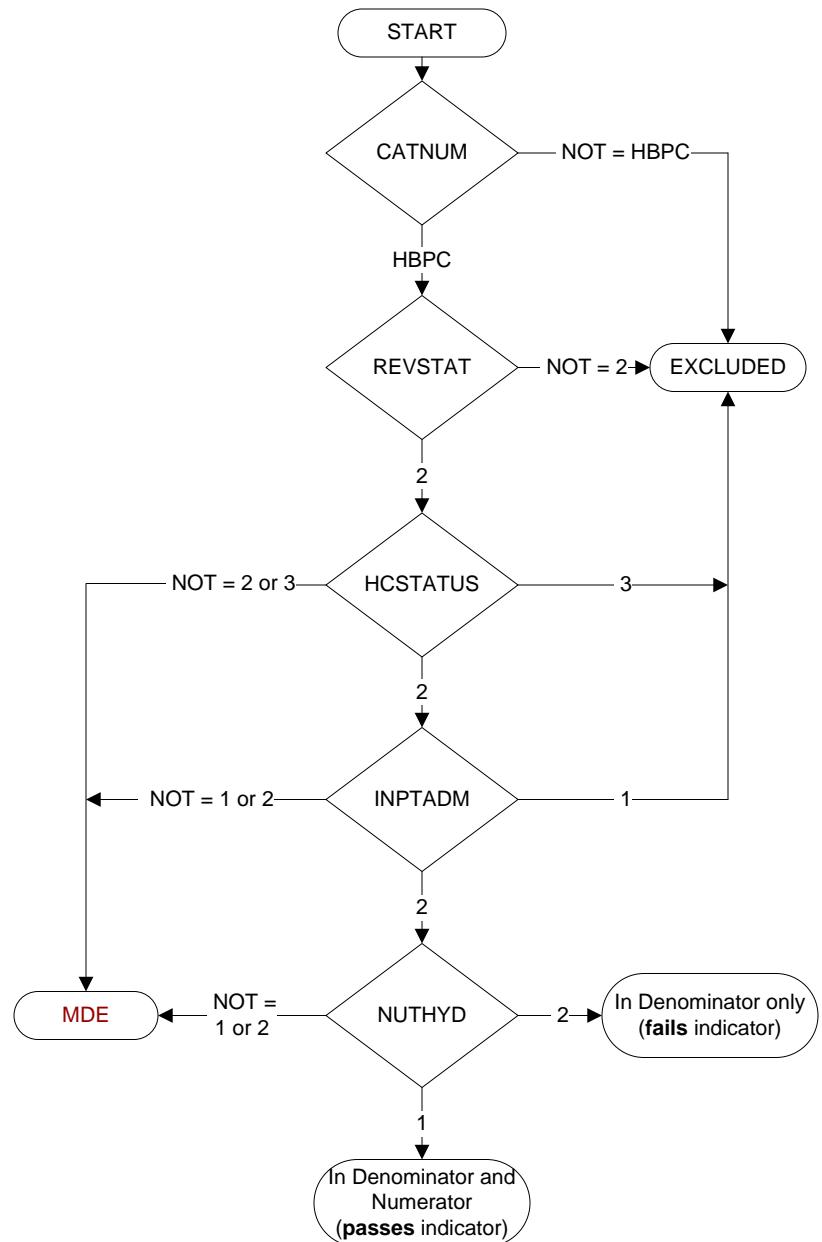
During the time frame from (computer display $\text{admisdt} - 30 \text{ days}$ to $\text{admisdt} + 30 \text{ days}$), did the record document the patient was hospitalized?

- 1. Yes
- 2. No

NUTHYD (HBPC)

During the time frame from (computer to display $\text{admisdt} - 30 \text{ days}$ to $\text{admisdt} + 30 \text{ days}$), does the record document assessment of the patient's nutritional and hydration needs by a registered or clinical dietitian during a face-to-face encounter?

- 1. Yes
- 2. No



MDE = Missing or
Invalid Data Exclusion
(data error)