

REVSTAT

REVIEW STATUS (not abstracted)

0. Abstraction has not begun
1. Abstraction in progress
2. Abstraction completed w/o errors
3. TVG failure (exclusion)
4. Record contains missing required answers (error record)
5. Administrative exclusion from all measures

DCDATE

Discharge date from hospital:

ADMDT

Date of admission to inpatient care:

AGE (calculated field)

ADMDT - BIRTHDT

DCDISPO

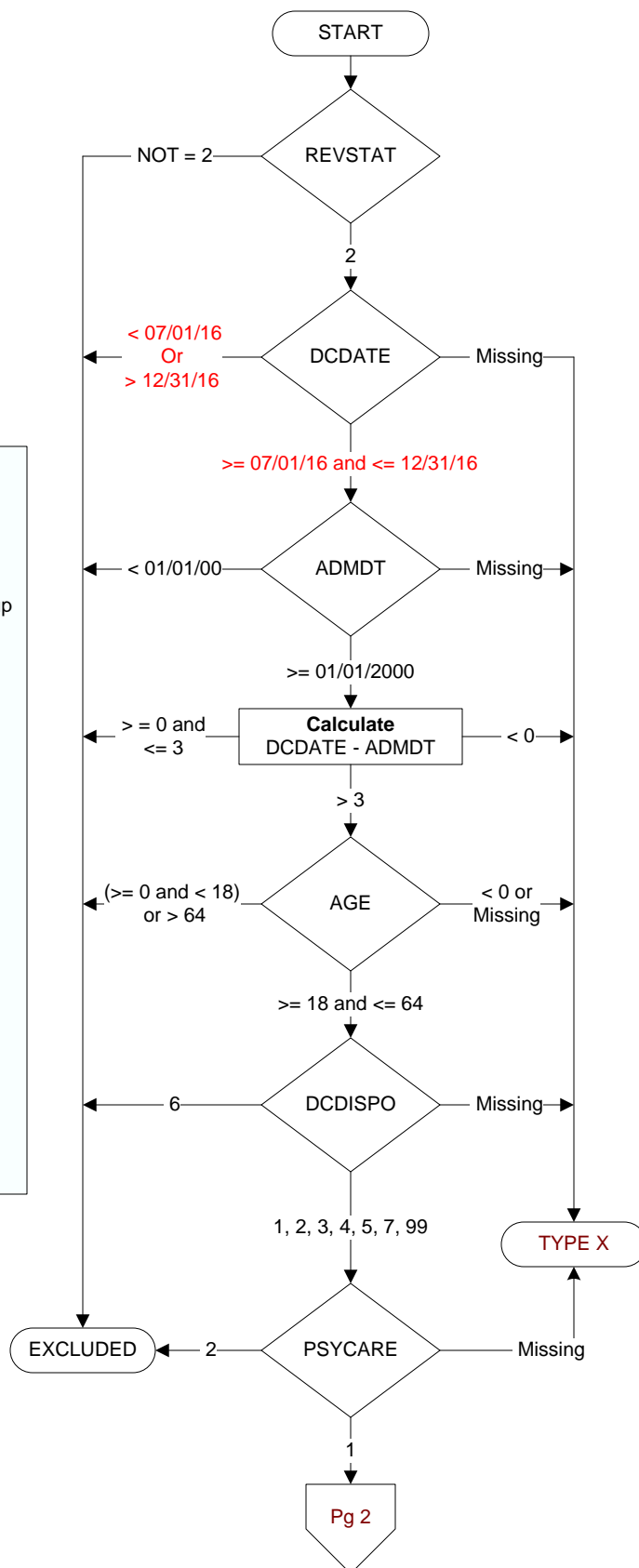
What was the patient's discharge disposition on the day of discharge?

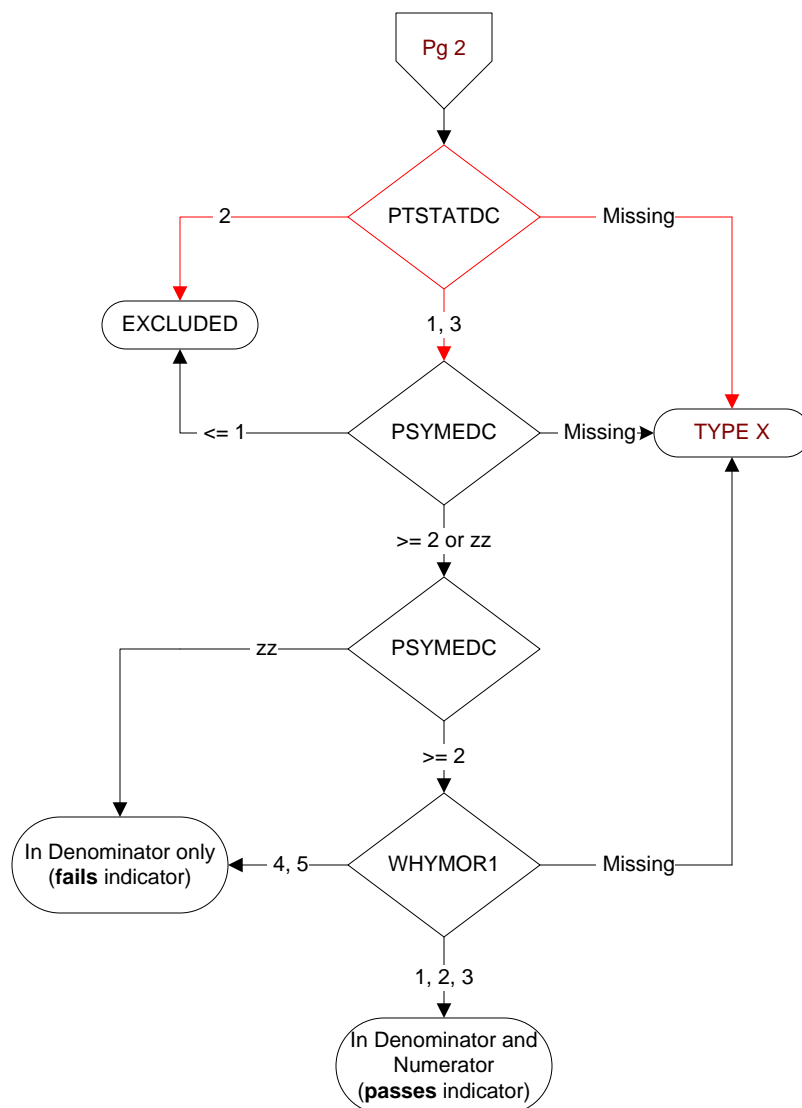
1. Home
 - Assisted Living Facilities (ALFs) – includes assisted living care at nursing home/facility
 - Court/Law Enforcement – includes detention facilities, jails, and prison
 - Home – includes board and care, domiciliary, foster or residential care, group or personal care homes, retirement communities, and homeless shelters
 - Home with Home Health Services
 - Outpatient Services including outpatient procedures at another hospital, outpatient Chemical Dependency Programs and Partial Hospitalization
2. Hospice – Home (or other home setting as listed in #1 above)
3. Hospice – Health Care Facility
 - General Inpatient and Respite, Residential and Skilled Facilities, and Other Health Care Facilities
4. Acute Care Facility
 - Acute Short Term General and Critical Access Hospitals
 - Cancer and Children's Hospitals
 - Department of Defense and Veteran's Administration Hospitals
5. Other Health Care Facility - Extended or Immediate Care Facility (ECF/ICF)
 - Long Term Acute Care Hospital (LTACH)
 - Nursing Home or Facility including Veteran's Administration Nursing Facility
 - Psychiatric Hospital or Psychiatric Unit of a Hospital
 - Rehabilitation Facility including Inpatient Rehabilitation Facility/Hospital or Rehabilitation Unit of a Hospital
 - Skilled Nursing Facility (SNF), Sub-Acute Care or Swing Bed
 - Transitional Care Unit (TCU)
 - Veteran's Home
6. Expired
7. Left Against Medical Advice/AMA
99. Not documented or unable to determine

PSYCARE

Did the patient receive care in an inpatient psychiatric care setting?

1. Yes
2. No



**PTSTATDC**

What was the patient's status at the time the patient left the hospital based inpatient psychiatric care setting?

1. The medical record contains documentation that the patient was discharged from the hospital based inpatient psychiatric care setting and hospital system at the same time
2. The medical record contains documentation of one of the following:
 - the patient eloped and was discharged
 - the patient failed to return from leave and was discharged
 - the patient has not yet been discharged from the hospital
 - the patient was discharged from the hospital to another level of care outside of the hospital system from a setting other than the inpatient psychiatric care setting
3. Unable to determine from medical record documentation

PSYMEDC

Enter the documented number of scheduled antipsychotic medications prescribed for the patient at discharge.

WHYMOR1

Is there documentation in the medical record of appropriate justification for discharging the patient on two or more routine antipsychotic medications?

1. The medical record contains documentation of a history of a minimum of three failed multiple trials of monotherapy
2. The medical record contains documentation of a recommended plan to taper to monotherapy due to previous use of multiple antipsychotic medications **OR** documentation of a cross-taper in progress at the time of discharge
3. The medical record contains documentation of augmentation of Clozapine
4. Documentation of a justification other than those listed in options 1 – 3
5. The medical record does not contain documentation supporting the reason for being discharged on two or more antipsychotic medications **OR** unable to determine from medical record documentation