

REVSTAT

REVIEW STATUS (not abstracted)

0. Abstraction has not begun
1. Abstraction in progress
2. Abstraction completed w/o errors
3. TVG failure (exclusion)
4. Record contains missing required answers (error record)
5. Administrative exclusion from all measures

AGE - calculated field

VTEADMDT - Patient date of birth

VTEDCDT (VTE)

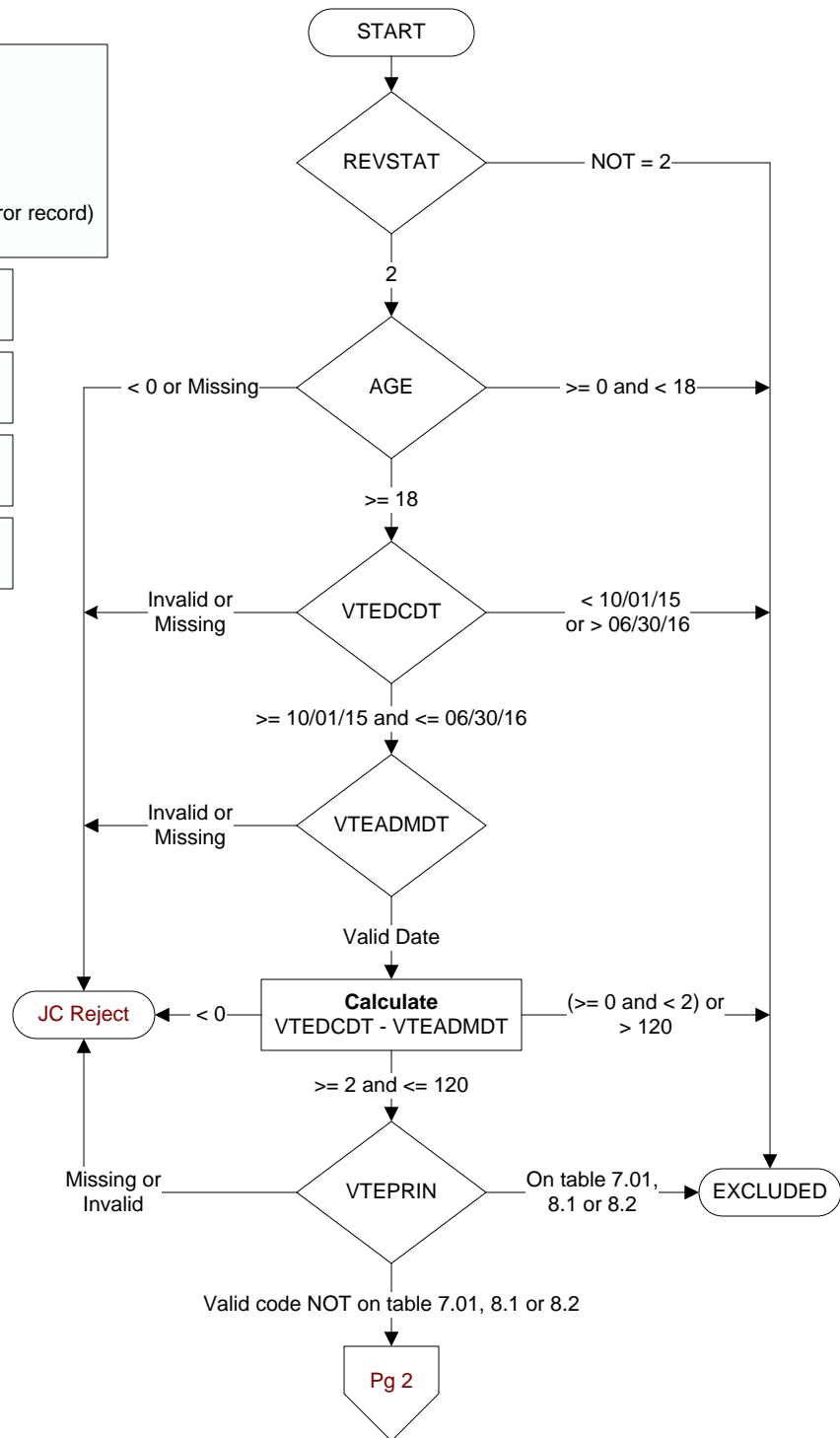
Discharge Date

VTEADMDT (VTE)

Date of admission to acute inpatient care:

VTEPRIN (VTE)

Enter the ICD-10-CM principal diagnosis code:

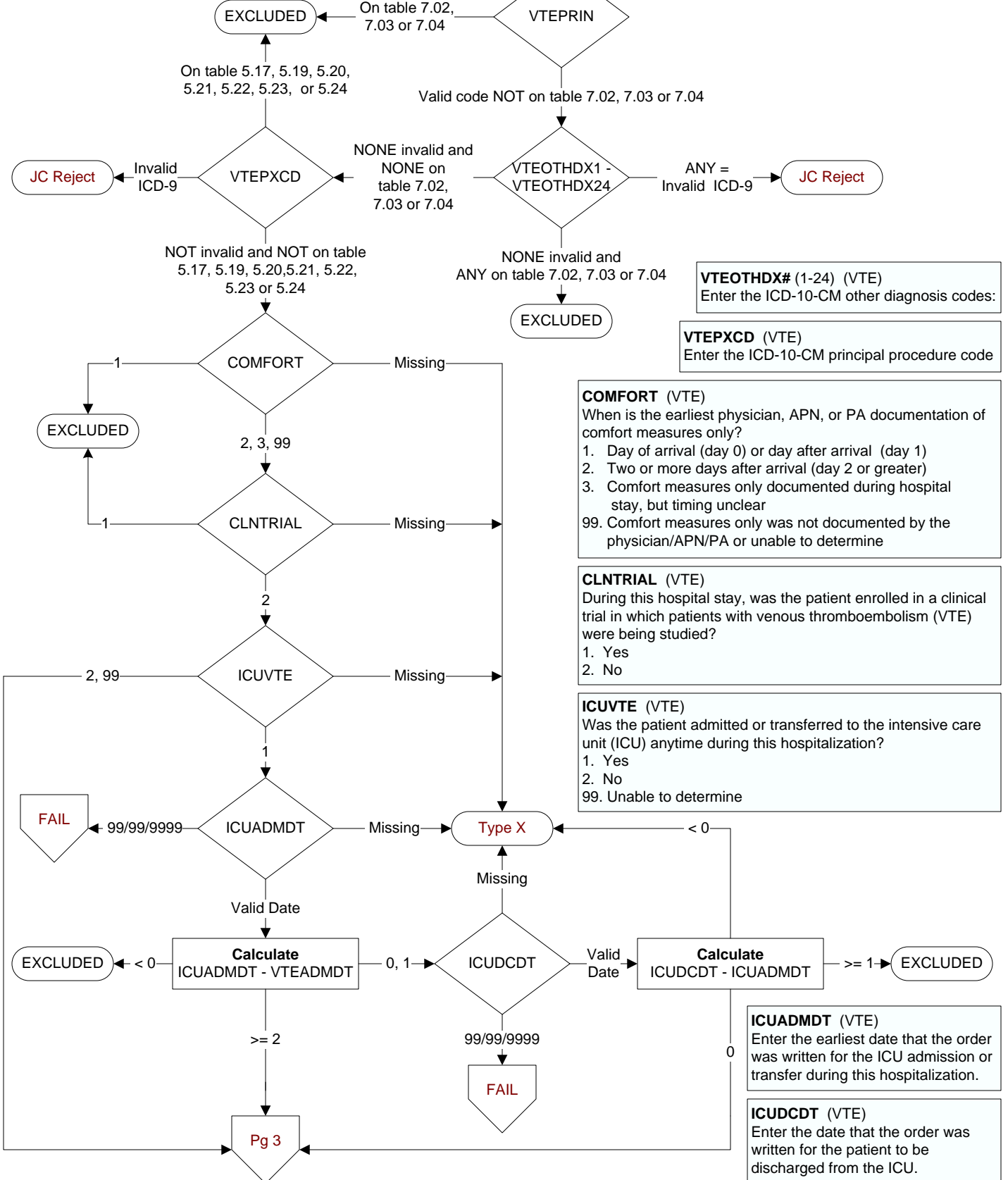


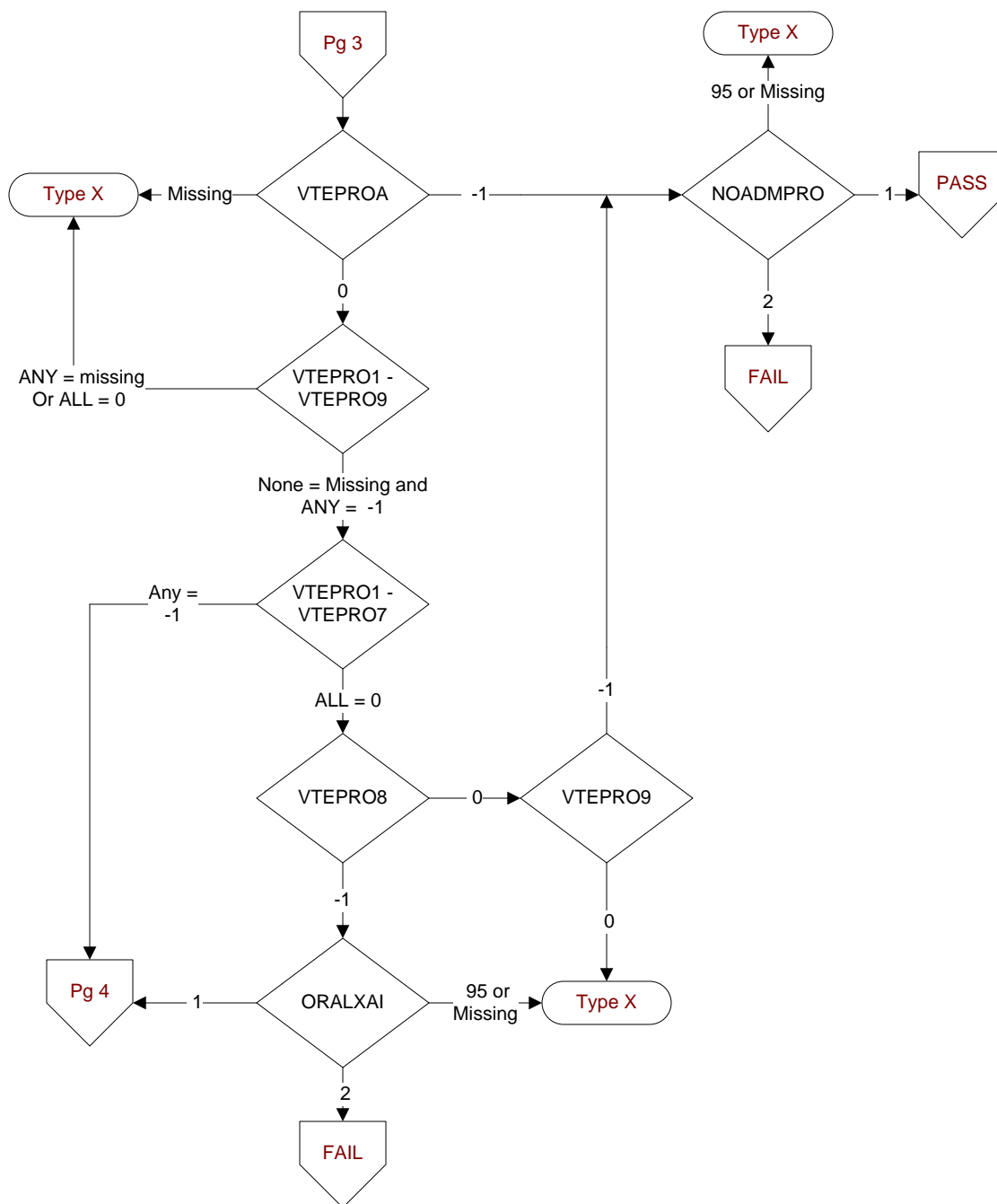
VTE 3q16 - VTE1 - Venous Thromboembolism (VTE) Prophylaxis (VTE-1)

VTEPRIN (VTE)

Enter the ICD-9-CM principal diagnosis code:

Pg 2





NOADMPRO (VTE)

Is there physician/APN/PA or pharmacist documentation of a reason why VTE prophylaxis was not administered the day of or day after hospital admission (or day of surgery or day after surgery end date)?

1. Yes
2. No
95. Not applicable

ORALXAI (VTE)

Is there physician/APN/PA documentation of a reason why Oral Factor Xa Inhibitor was administered for VTE prophylaxis?

1. Yes
2. No
95. Not applicable

What type of VTE prophylaxis was administered during this hospitalization?

Indicate all that apply:

VTEPRO1. Low dose unfractionated heparin(LDUH), **subcutaneous route only**

VTEPRO2. Low molecular weight heparin (LMWH), **such as enoxaparin**

VTEPRO3. Intermittent pneumatic compression devices (IPC - **such as SCDs**)

VTEPRO4. Graduated compression stockings (**GCS - such as TED hose**)

VTEPRO5. Parenteral Factor Xa Inhibitor (fondaparinux)

VTEPRO6. Warfarin

VTEPRO7. Venous foot pumps (VFP)

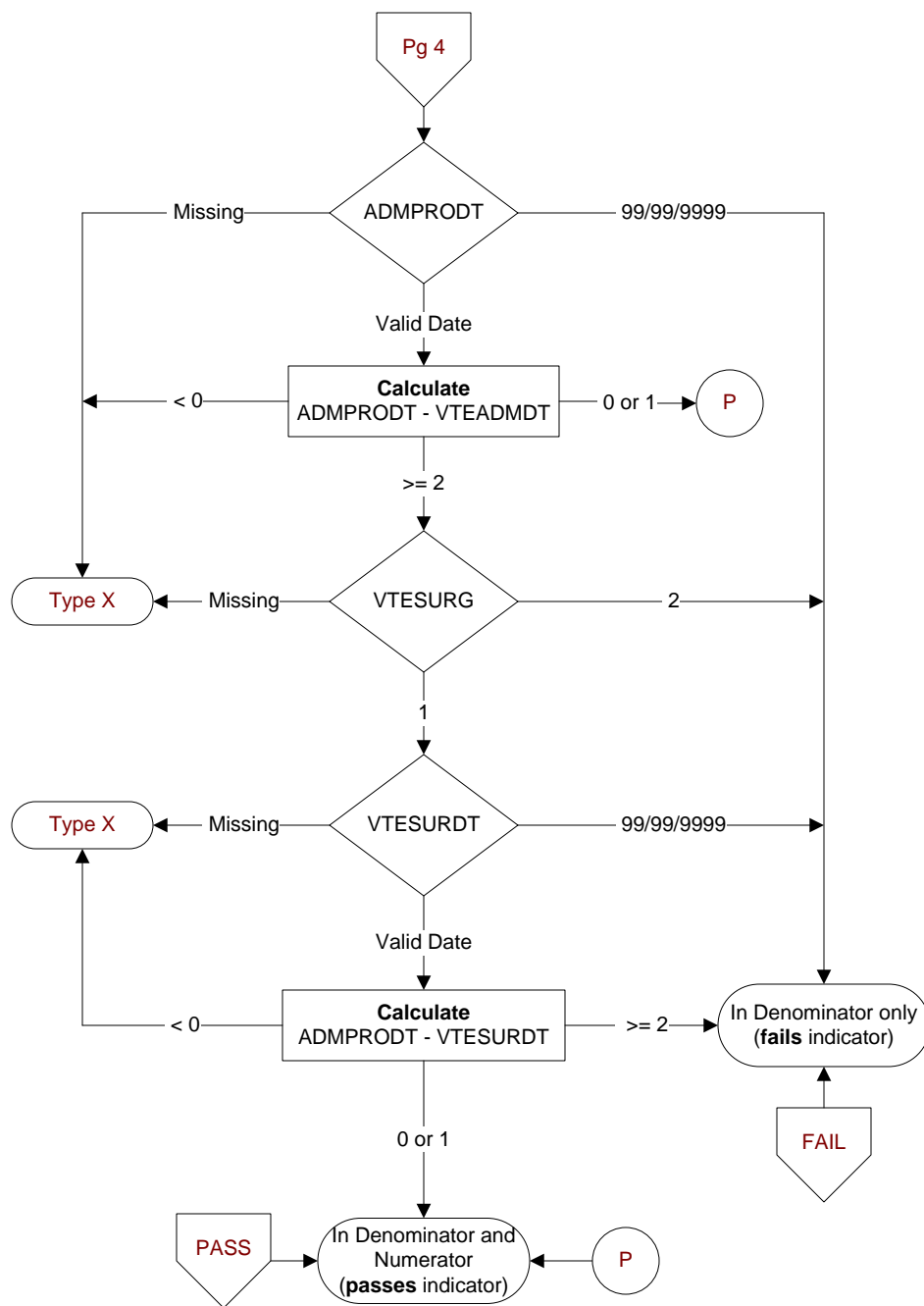
VTEPRO8. Oral Factor Xa Inhibitor (such as rivaroxaban)

VTEPRO9. Aspirin

VTEPROA None of the above or unable to determine from medical record documentation

-1 Yes

0 No


VTESURG (VTE)

Was a surgical procedure performed using general or neuraxial anesthesia the day of or the day after hospital admission?

1. Yes
2. No

ADMPRODT (VTE)

Enter the date VTE prophylaxis (other than aspirin) was administered after hospital admission.

VTESURDT (VTE)

Enter the surgery end date.