

REVSTAT

REVIEW STATUS (not abstracted)

- 0. Abstraction has not begun
- 1. Abstraction in progress
- 2. Abstraction completed w/o errors
- 3. TVG failure (exclusion)
- 4. Record contains missing required answers (error record)
- 5. Administrative Exclusion

HCSTATUS (HBPC)

Counting from the most recent HBPC encounter within the study interval, enter the patient's status in regard to HBPC admission:

- 2. HBPC admission greater than or equal to 30 days but less than or equal to 1 year
- 3. HBPC admission greater than one year (>365 days from the admission date)

STDYBEG

Study Begin date - received on pull list

ADMISDT (HBPC)Enter the HBPC admission date. **Admission date is date of the progress note documenting admission.****INPTADM** (HBPC)During the time frame from (computer display admisdt to admisdt + 30 days), did the record document the patient was hospitalized?

- 1. Yes
- 2. No

MEDONE (HBPC)During the timeframe from (computer to display stdybeg 110 days to stdybeg 90 days), was the patient on at least one medication?

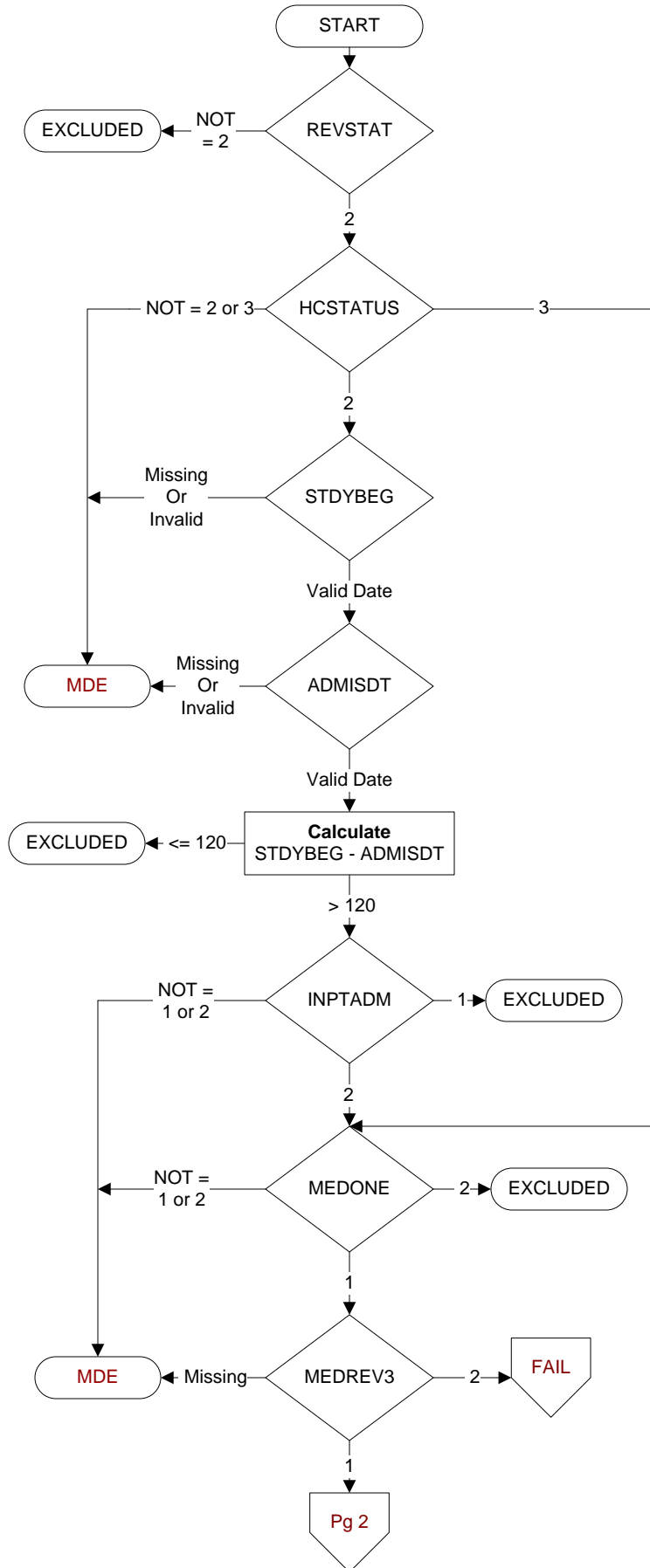
- 1. Yes
- 2. No

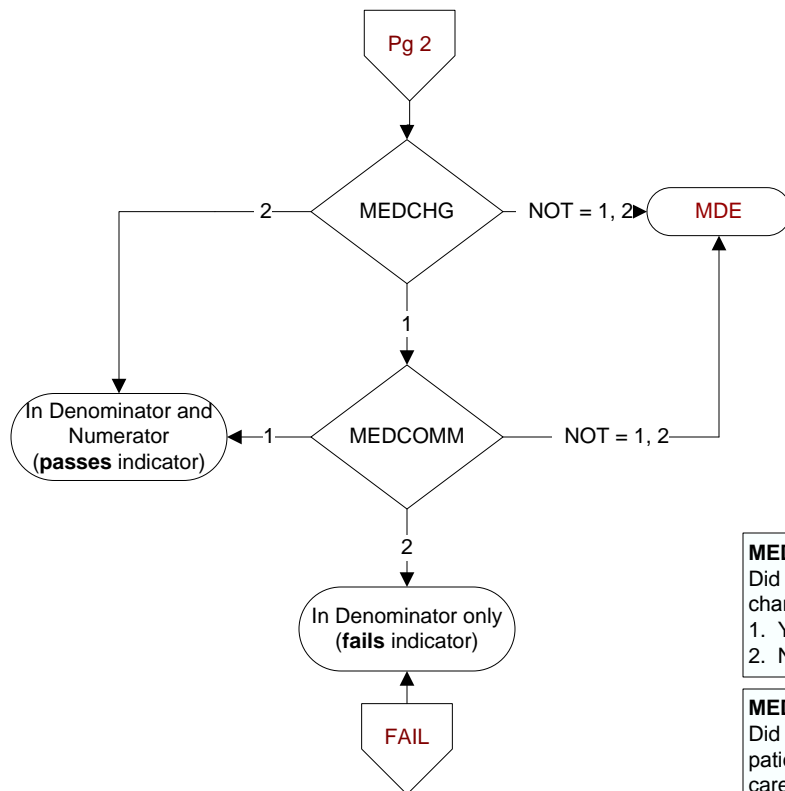
MEDREV3 (HBPC)

Did the record document the patient's HBPC medication management plan in a note signed by the pharmacist?

- 1. Yes
- 2. No

**MDE = Missing or
Invalid Data Exclusion
(data error)**



**MEDCHG (HBPC)**

Did the pharmacist make any recommendation for change in the patient's medication regimen?

1. Yes
2. No

MEDCOMM (HBPC)

Did the pharmacist communicate any change in the patient's medication regimen to the HBPC or primary care provider?

1. Yes
2. No