

**CATNUM**

Sample category  
 16. AMI - Outpatient visit  
 36. SCI Dx  
 48. Female, age 20-69  
 50. Random Sample  
 51. Random Sample MH  
 54. Frail/Elderly  
 60. DM Outpatient  
 61. Inpatient SC  
 68. Contract CBOC

**FEFLAG** (rcvd on pull list)

FE case flagged for CGPI review / scoring?  
 0. No  
 1. Yes

**REVSTAT**

REVIEW STATUS (not abstracted)

- 0. Abstraction has not begun
- 1. Abstraction in progress
- 2. Abstraction completed w/o errors
- 3. TVG failure (exclusion)
- 4. Record contains missing required answers (error record)
- 5. Administrative exclusion from all measures

**DOCHOSPCE** (PI module)

Is one of the following documented in the medical record:

- the patient is enrolled in a VHA or community-based Hospice program
- the patient has a diagnosis of cancer of the liver, pancreas, or esophagus
- on the problem list it is documented the patient's life expectancy is less than 6 months?

- 1. Yes
- 2. No

**DEMENTDX2** (MH)

During the past year, does the record document a diagnosis of dementia/neurocognitive disorder as evidenced by one of the following:

**ICD-9-CM codes (Prior to 10/01/15):**

046.11, 046.19, 046.3, 290.0, 290.10, 290.11, 290.12, 290.13, 290.20, 290.21, 290.3, 290.40, 290.41, 290.42, 290.43, 291.2, 292.82, 294.10, 294.11, 294.8, 331.0, 331.11, 331.19, 331.2, 331.7, 331.82, 331.89, 331.9, 333.0 or 333.4

**ICD-10-CM codes (On or after 10/01/15):**

A8100, A8101, A8109, A812, A8189, A819, Primary I60xx – I69xx + Secondary F0150 or F0151, F0390, F0391, any Primary xxx.xx + Secondary F0280 or F0281, F0390, F0391, F1027, F1997, G231, G300, G301, G308, G309, G3101, G3109, G3183, G903

- 1. Yes
- 2. No

**DEMSEV** (MH)

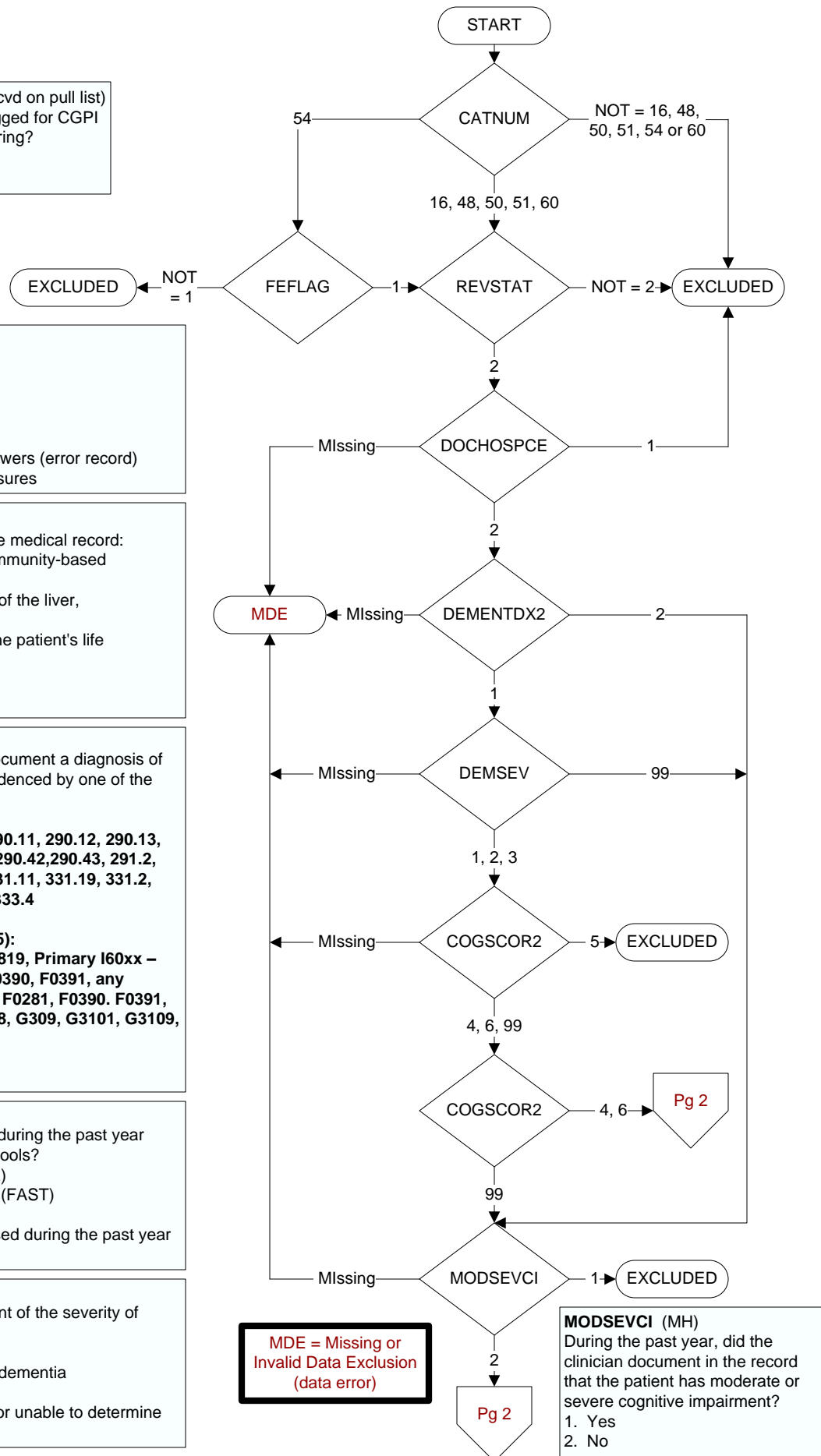
Was the severity of dementia assessed during the past year using one of the following standardized tools?

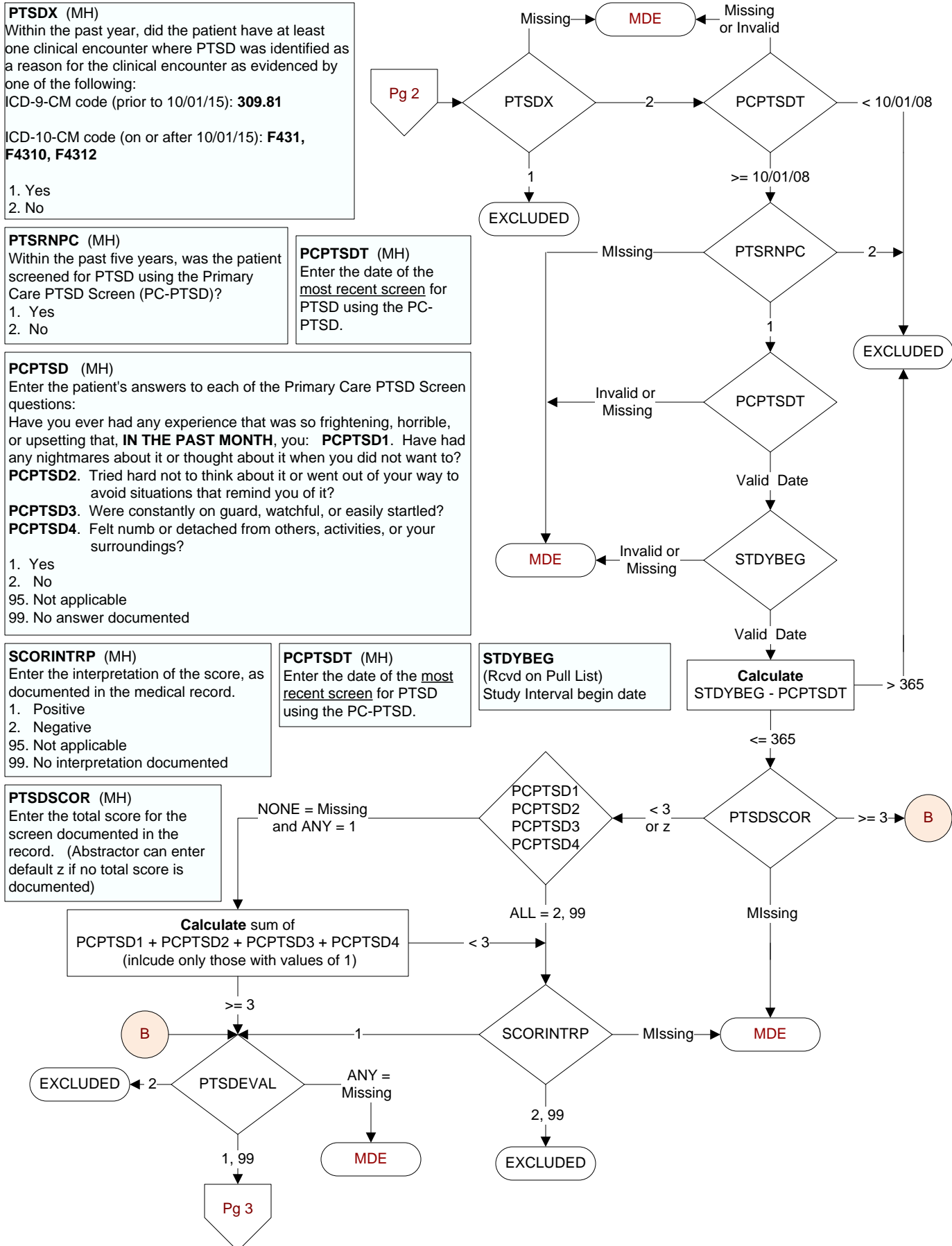
- 1. Clinical Dementia Rating Scale (CDR)
- 2. Functional Assessment Staging Tool (FAST)
- 3. Global Deterioration Scale (GDS)
- 99. Severity of dementia was not assessed during the past year using one of the specified tools

**COGSCOR2** (MH)

What was the outcome of the assessment of the severity of dementia assessment?

- 4. Score indicated mild dementia
- 5. Score indicated moderate to severe dementia
- 6. Score indicated no dementia
- 99. No score documented in the record or unable to determine outcome





**PTSDEVAL (MH)**

Following the positive PC-PTSD screen, did the provider document the patient needed further intervention for PTSD?

1. Yes, documented further intervention needed
2. Documented no further intervention needed
99. No documentation regarding further intervention

**NOPTSINT (MH)**

Did the provider document the patient refused further evaluation/treatment for PTSD?

1. Yes
2. No

**PTSDCARE (MH)**

Did the provider document the patient was already receiving recommended care for PTSD?

1. Yes
2. No

**OUTPTSD (MH)**

Did the provider document the patient was to receive care for PTSD outside this VA?

1. Yes
2. No

**PTSDMHEVL (MH)**

Following the positive PC-PTSD screen, did the provider document that the patient needed a mental health evaluation?

1. Yes, mental health evaluation needed
2. No mental health evaluation needed
99. No documentation regarding mental health evaluation

**PCPTSDFO (MH)**

Did the provider document that the patient will follow-up with a primary care provider for the positive PC-PTSD screen?

1. Yes
2. No
95. Not applicable

**PTSDURG (MH)**

Following the positive PTSD screen, did the provider document the urgency of the mental health evaluation?

1. Immediate/emergent mental health evaluation needed
2. Urgent mental health evaluation needed
3. Non-urgent mental health evaluation needed
99. No documentation of urgency of care

**PTSCONDT (MH)**

Enter the date the licensed independent provider documented that contact information was provided to the patient.

**PTSDMHDT (MH)**

Enter the date the patient was emergently transferred to mental health care services.

**REFPTSDT (MH)**

Enter the date the mental health consult was placed.

