

REVSTAT

REVIEW STATUS (not abstracted)

- 0. Abstraction has not begun
- 1. Abstraction in progress
- 2. Abstraction completed w/o errors
- 3. TVG failure (exclusion)
- 4. Record contains missing required answers (error record)
- 5. Administrative exclusion from all measures

AGE - calculated field

ADMDT - Patient date of birth

DCDATE (STK)

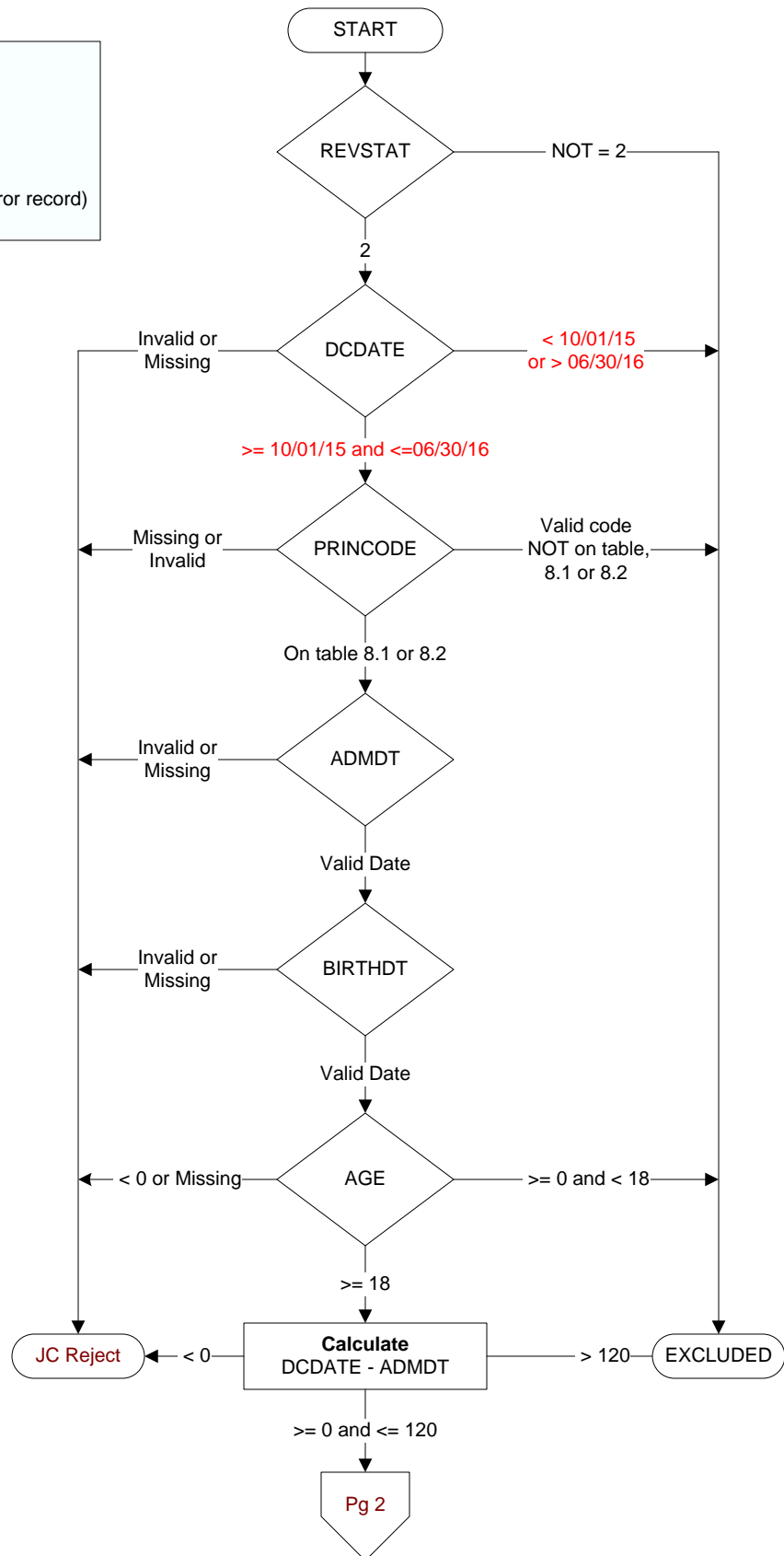
Discharge Date

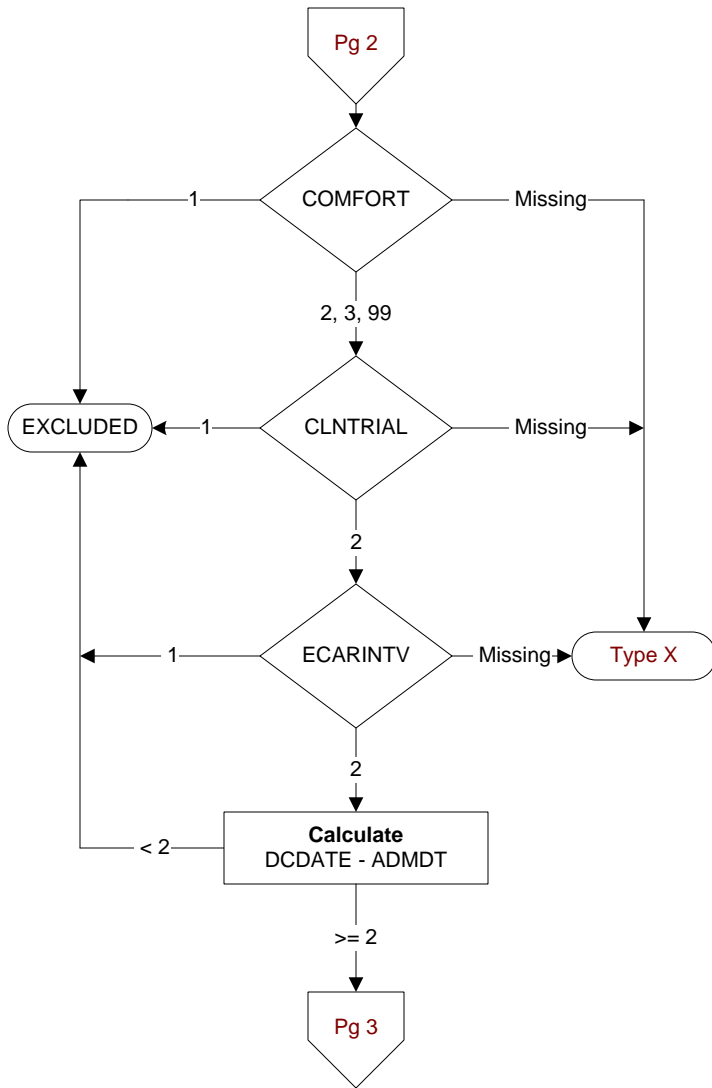
ADMDT (STK)

Admission date

PRINCODE (STK)

ICD-10-CM principal diagnosis code





COMFORT (STK)

When is the earliest physician, APN, or PA documentation of comfort measures only?

1. Day of arrival (day 0) or day after arrival (day 1)
2. Two or more days after arrival (day 2 or greater)
3. Comfort measures only documented during hospital stay, but timing unclear
99. Comfort measures only was not documented by the physician/APN/PA or unable to determine

CLNTRIAL (STK)

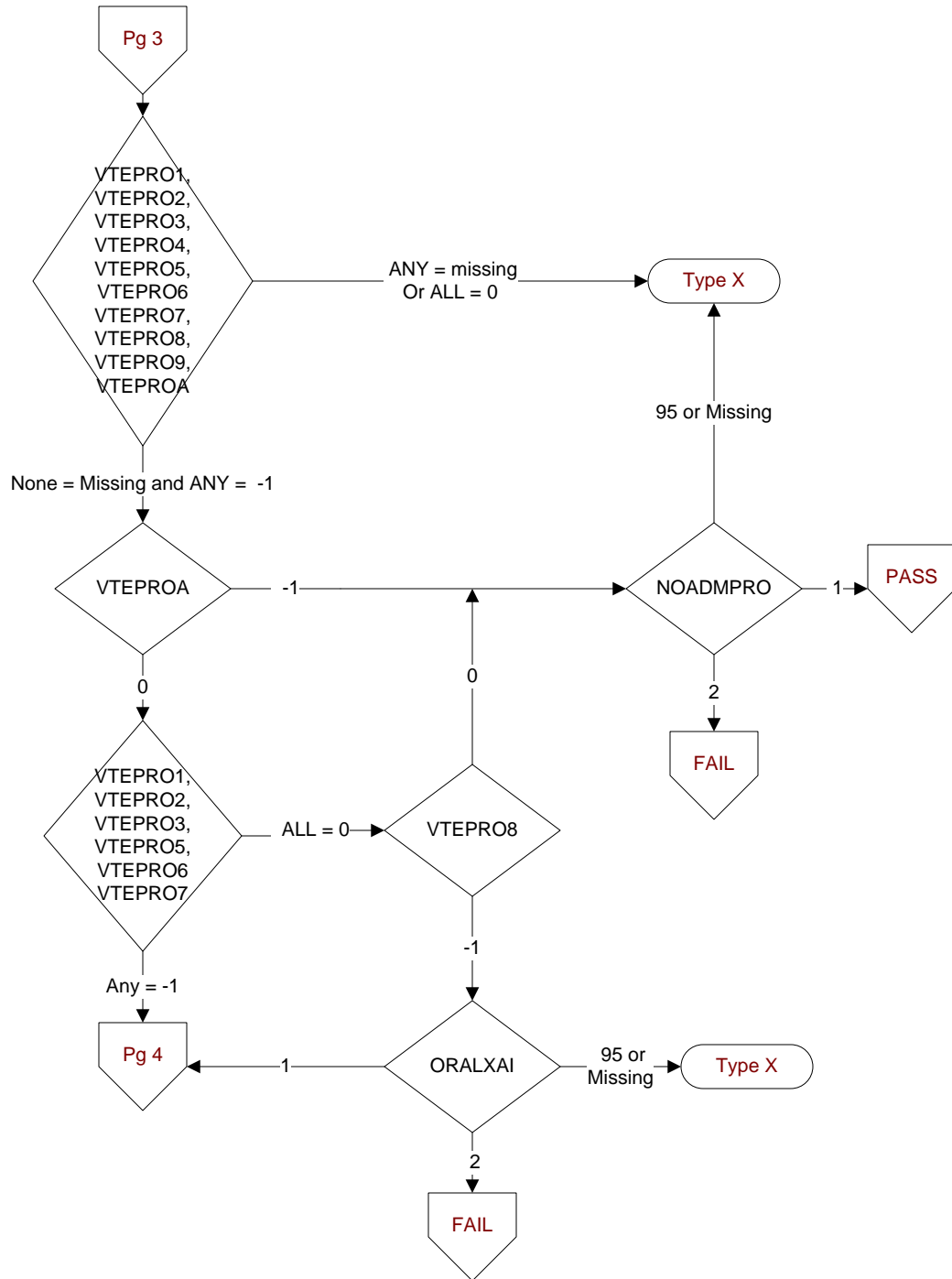
During this hospital stay, was the patient enrolled in a clinical trial in which patients with stroke were being studied?

1. Yes
2. No

ECARINTV (STK)

Is there documentation that this admission was for the sole purpose of performance of an elective carotid intervention procedure (e.g., elective carotid endarterectomy, carotid angioplasty, carotid stenting)?

1. Yes
2. No



NOADMPRO (STK)

Is there physician/APN/PA or pharmacist documentation of a reason why VTE prophylaxis was not administered the day of or day after hospital admission?

1. Yes
2. No
95. Not applicable

ORALXAI (STK)

Is there physician/APN/PA documentation of a reason why Oral Factor Xa Inhibitor was administered for VTE prophylaxis?

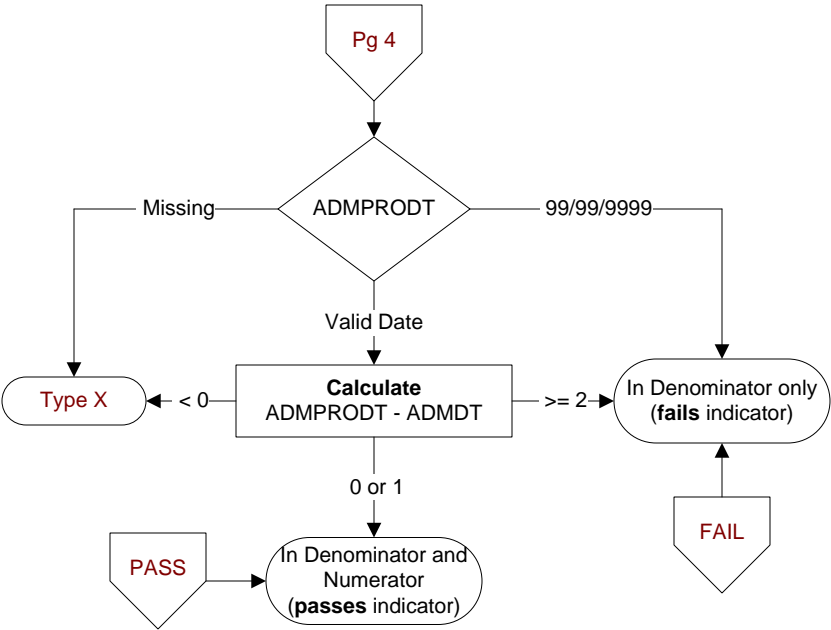
1. Yes
2. No
95. Not applicable

What type of VTE prophylaxis was administered during this hospitalization?

Indicate all that apply:

- VTEPRO1.** Low dose unfractionated heparin (LDUH), **subcutaneous route only**
- VTEPRO2.** Low molecular weight heparin (LMWH), **such as enoxaparin**
- VTEPRO3.** Intermittent pneumatic compression devices (**such as SCDs**)
- VTEPRO4.** Graduated compression stockings (**such as TED hose**)
- VTEPRO5.** Parenteral Factor Xa Inhibitor (fondaparinux)
- VTEPRO6.** Warfarin
- VTEPRO7.** Venous foot pumps (VFP)
- VTEPRO8.** Oral Factor Xa Inhibitor (such as rivaroxaban)
- VTEPRO9.** Aspirin
- VTEPROA** None of the above or unable to determine from medical record documentation

- 1 Yes
- 0 No



VTESURG (VTE)
Was a surgical procedure performed using general or neuraxial anesthesia the day of or the day after hospital admission?
1. Yes
2. No

ADMPRODT (VTE)
Enter the date the VTE prophylaxis was administered after hospital admission.