

CATNUM

Sample category
 16. AMI - Outpatient visit
 36. SCI Dx
 48. Female, age 20-69
 50. Random Sample
 51. Random Sample MH
 54. Frail/Elderly
 60. DM Outpatient
 61. Inpatient SCI
 68. Contract CBOC

SEENYR (Validation)

Was the **veteran** seen within the last twelve months by a physician, NP, PA, Psychologist, or Clinical Nurse Specialist in one of the "Nexus clinics"?
Within the last 12 months = twelve months from the first day of the study interval to the end of the study interval

1. yes
 2. no

SPECVST (Validation)

Was the one visit limited to unscheduled urgent care, a specialist appointment, or posthospitalization followup at a tertiary center (that was not to an SCI Center or SCI support clinic for catnums 36 and 61)?

1. yes
 2. no

REVSTAT

REVIEW STATUS (not abstracted)

0. Abstraction has not begun
 1. Abstraction in progress
 2. Abstraction completed w/o errors
 3. TVG failure (exclusion)
 4. Record contains missing required answers (error record)
 5. Administrative exclusion from all measures

DOCHOSPCE (PI module)

Is one of the following documented in the medical record:

- the patient is enrolled in a VHA or community-based Hospice program
- the patient has a diagnosis of cancer of the liver, pancreas, or esophagus
- on the problem list it is documented the patient's life expectancy is less than 6 months?

TOBNOW (PI Module)

At the most recent screening, did the patient report he/she is a current tobacco user?

1. Reported he/she is a current tobacco user
 2. Reported he/she is not a current tobacco user
 95. Not applicable

OFFTUCRX (PI Module)

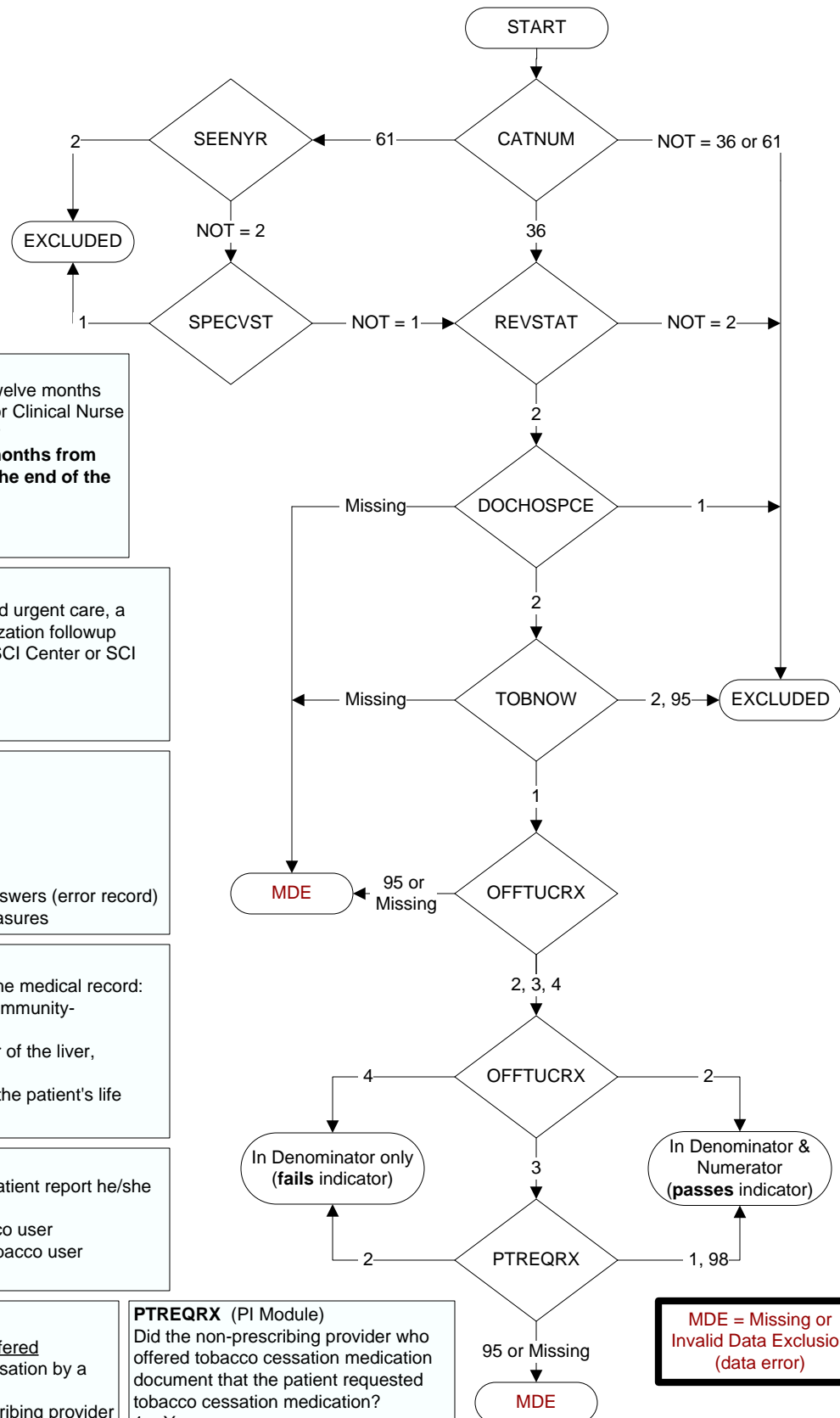
Within the past year, was the patient offered medication to assist in tobacco use cessation by a provider?

2. Yes, medication offered by a prescribing provider
 3. Yes, medication offered by non-prescribing provider
 4. No offer of medication documented
 95. Not applicable

PTREQRX (PI Module)

Did the non-prescribing provider who offered tobacco cessation medication document that the patient requested tobacco cessation medication?

1. Yes
 2. No
 95. Not applicable
 98. Patient refused tobacco cessation medication



MDE = Missing or Invalid Data Exclusion (data error)